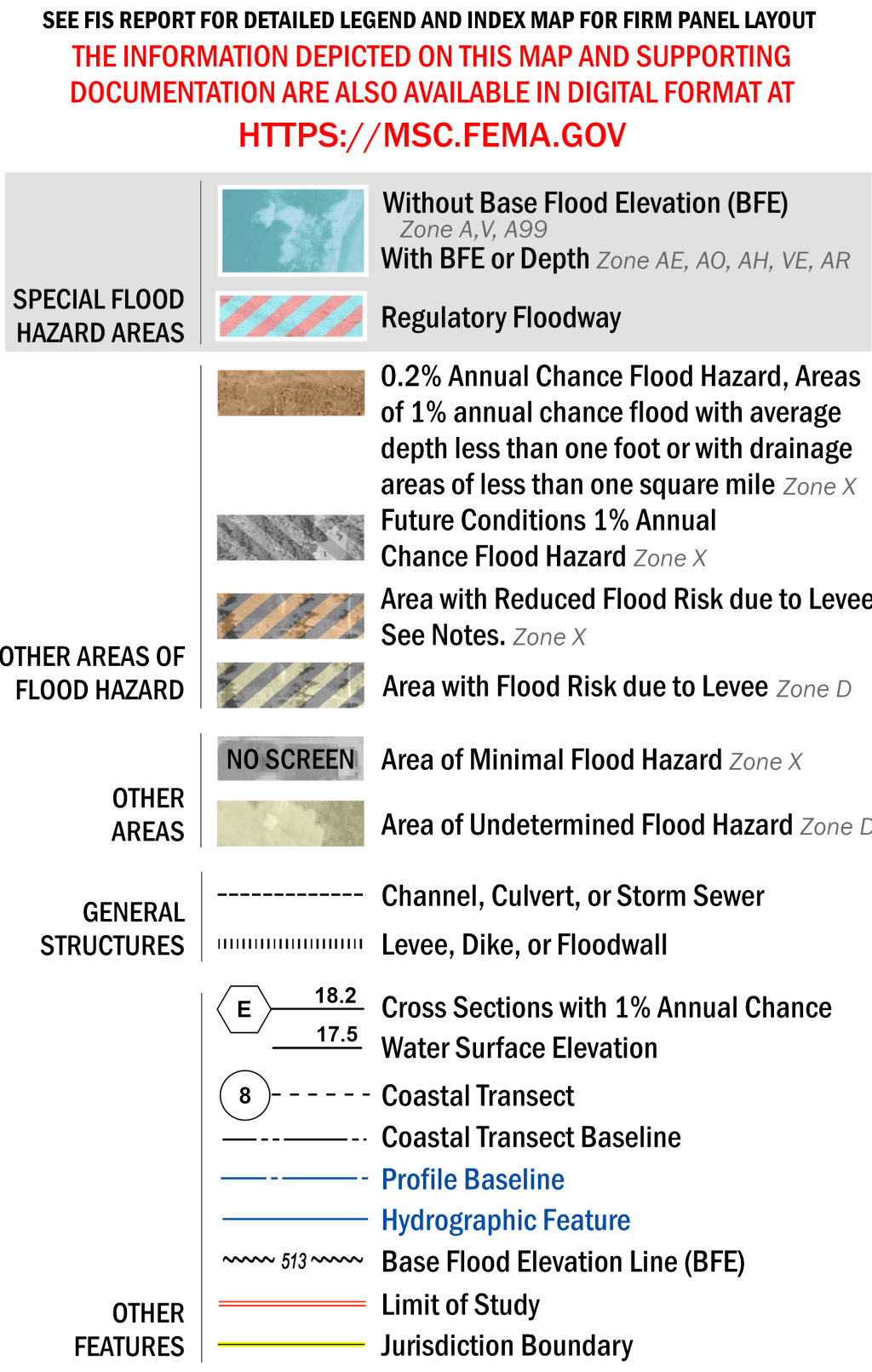


FLOOD HAZARD INFORMATION



NOTES TO USERS

For information and questions about this Flood Insurance Rate Map (FIRM), available products associated with this FIRM, including historic versions, the current map date for each FIRM panel, how to order products, or the National Flood Insurance Program (NFIP) in general, please call the FEMA Mapping and Insurance eXchange at 1-877-FEMA-MAP (1-877-336-2627) or visit the FEMA Flood Map Service Center website at <https://msc.fema.gov>. Available products may include previously issued Letters of Map Change, a Flood Insurance Study Report, and/or digital versions of this map. Many of these products can be ordered or obtained directly from the website.

Communities annexing land on adjacent FIRM panels must obtain a current copy of the adjacent panel as well as the current FIRM Index. These may be ordered directly from the Flood Map Service Center at the number listed above.

For community and countywide map dates refer to the Flood Insurance Study Report for this jurisdiction.

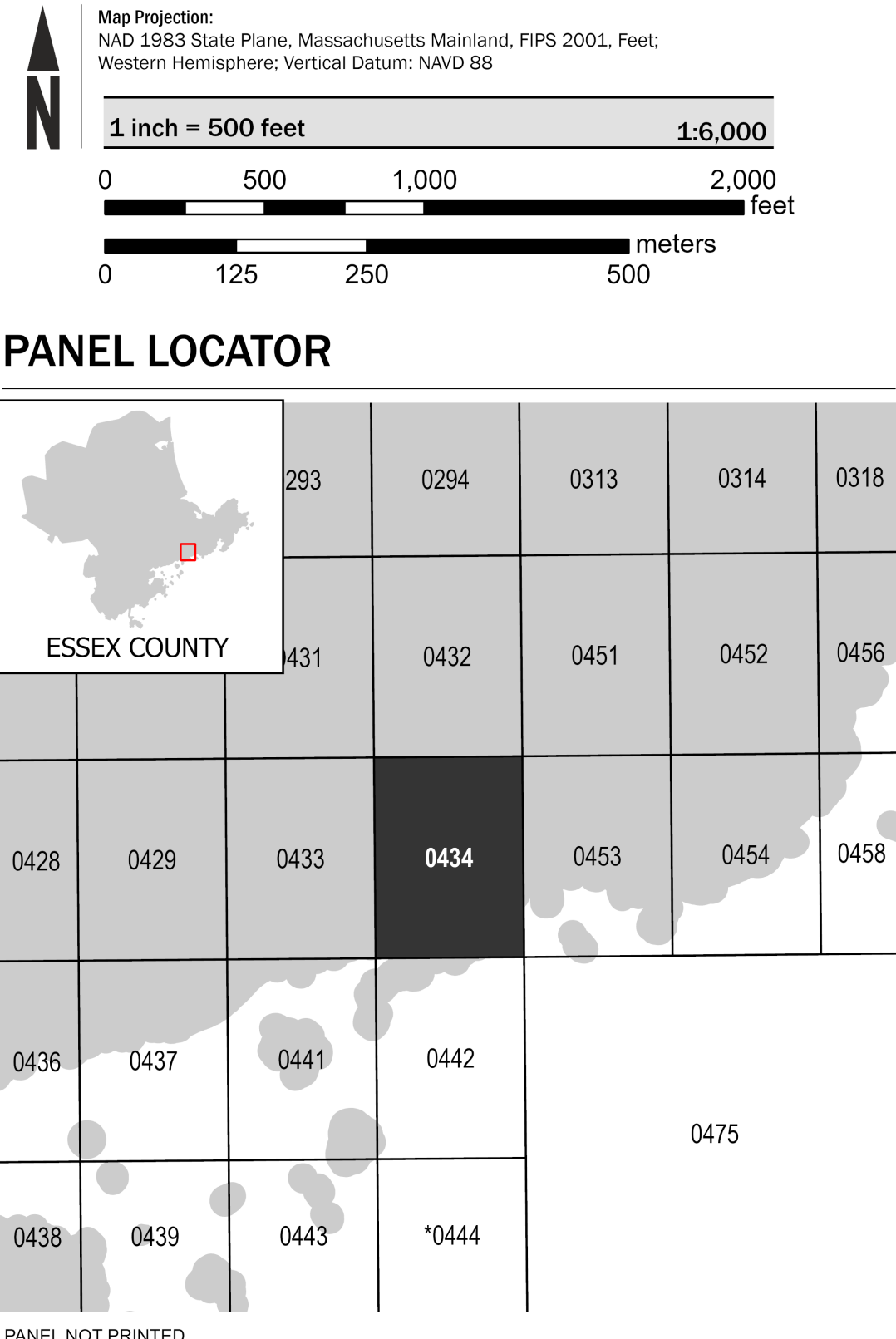
To determine if flood insurance is available in this community, contact your Insurance agent or call the National Flood Insurance Program at 1-800-638-6620.

Base map information shown on the FIRM uses imagery from 2019 provided by the U.S. Geological Survey at a resolution of 0.15 meter and 2016 transportation data provided by the U.S. Census Bureau with an undefined scale, and political boundaries from 2017 provided by MassGIS at a scale of 1:5,000.

LIMIT OF MODERATE WAVE ACTION: Zone AE has been divided by a Limit of Moderate Wave Action (LIMWA). The LIMWA represents the approximate landward limit of the 1.5-foot breaking wave. The effects of wave hazards between Zone VE and the LIMWA (or between the shoreline and the LIMWA for areas where Zone VE is not identified) will be similar to, but less severe than, those in the Zone VE.

Limit of Moderate Wave Action (LIMWA)

SCALE



FEMA

National Flood Insurance Program

NATIONAL FLOOD INSURANCE PROGRAM

FLOOD INSURANCE RATE MAP

ESSEX COUNTY, MASSACHUSETTS

(All Jurisdictions)

PANEL 0434 OF 0600

Panel Contains:

COMMUNITY MANCHESTER-BY-THE-SEA, TOWN OF 250090

NUMBER 0434

PANEL SUFFIX H

VERSION NUMBER 2.6.3.6

MAP NUMBER 25009C0434H

MAP REVISED July 8, 2025