

Notice to Prospective Bidders**MANCHESTER-BY-THE-SEA PUBLIC LIBRARY - GENERATOR PROJECT
15 UNION STREET
MANCHESTER-BY-THE-SEA, MA 01944**

The attention of bidders submitting bids for the above subject project is called to the following addendum to the specifications and drawings. The items set forth herein, whether of omission, addition, substitution, or clarifications are all to be included in and form a part of the bid submitted.

SECTION 1: GENERAL

- 1.01 REMINDER: Sealed bids for the General Contract will now be received at Manchester-by-the-Sea Town Hall, DPW Office – Room 6, 3RD Floor, 10 Central Street, Manchester-by-the-Sea, MA 01944, prior to 11:00 AM on November 13, 2024 after which time all bids will be opened and read aloud.

SECTION 2: QUESTIONS AND CLARIFICATIONS

- 2.01 Clarification: Plumbing Drawings that were notated on the Title Sheet of the Drawings were not included as part of the Bid Set. They are included as part of this addendum.
- 2.02 Clarification: Electrical Drawings have been updated to include the following:
- A. The panel schedules have been updated to reflect single-phase service.
 - B. The ATS has been updated to reflect single-phase service.
 - C. We have updated the location of RGAP and the emergency power off button to more accurately reflect space in electrical room.

Please note that the full set of drawings can also be downloaded from our ShareFile Site at <https://blwengineers.sharefile.com/d-s7a9a2b5f34e14adba5e6d35fcdc17ca5>

**All bidders are required to acknowledge addenda in the appropriate section of the bid documents.
Failure to do so may result in rejection of the bid.**

MANCHESTER-BY-THE-SEA PUBLIC LIBRARY GENERATOR PROJECT

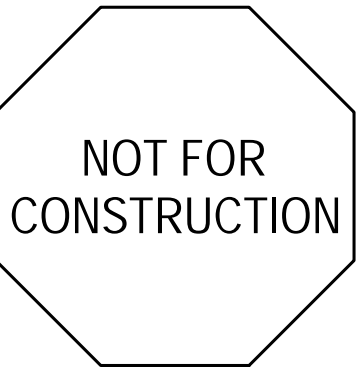
Town of Manchester-by-the-Sea
10 Central Street
Manchester-by-the-Sea, MA 01944



DRAWING INDEX:

TS	-	TITLE SHEET
E-0.1	-	LEGEND, SPECIFICATION, RISERS, PANEL SCHEDULES
E-0.2	-	DETAILS
E-1.0	-	SITE PLAN/BASEMENT
P-0.1	-	PLUMBING LEGEND, SPECIFICATION, AND DETAILS
P-1.0	-	PLUMBING FLOOR PLAN

Seal:



BLW Engineers, Inc.
311 Great Road, Post Office Box 1551
Littleton, Massachusetts 01460
T: 978.486.4301 F: 978.428.0067
www.blwengineers.com
HAC "Electrical" Plumbing "Fire Protection"

Client:

TOWN OF
MANCHESTER-BY-THE-SEA
10 CENTRAL ST
MANCHESTER-BY-THE-SEA, MA 01944

Submission:

BID DOCS 10/4/24

ADDENDUM #2 - Dwg Revs 10/30/24

Revision:

Project:

PUBLIC LIBRARY
GENERATOR PROJECT
15 UNION ST
MANCHESTER-BY-THE-SEA, MA 01944

THIS MATERIAL IS CONFIDENTIAL
AND MAY NOT BE DISCLOSED
WITHOUT PRIOR WRITTEN AUTHORIZATION
FROM BLW ENGINEERS INC.
COPYRIGHT BLW ENGINEERS INC.

Project No.: 24069

Drawn By: RG

Checked By: CM

Scale: As Noted

Title:

TITLE SHEET

Drawing No.:

TS

GENERAL NOTES

- LEGEND IS INTENDED TO SHOW DEPICTION OF SYMBOLS. IT DOES NOT IMPLY INTENT OF SCOPE. NOT ALL SYMBOLS SHOWN ON THIS LEGEND WILL BE USED ON THE DWGS.
- REFER TO ARCHITECTURAL PLANS AND ELEVATIONS FOR MOUNTING HEIGHTS AND EXACT LOCATIONS OF ALL DEVICES.
- PERFORM WORK AND PROVIDE MATERIALS AND EQUIPMENT TO MAKE INSTALLATION COMPLETE IN EVERY DETAIL UNDER THIS CONTRACT WHETHER OR NOT SPECIFICALLY SHOWN ON DRAWINGS.
- ALL EQUIPMENT AND WIRING ON DWGS IS SHOWN DIAGRAMMATICALLY. EXACT LOCATION AND METHOD OF SUPPORT SHALL BE DETERMINED IN THE FIELD, EXCEPT WHERE SPECIFIC DIMENSIONS AND DETAILS ARE SHOWN. ALL CONDUIT RUNS SHALL BE RIGIDLY SUPPORTED.

POWER NOTES

- ALL CONDUITS ARE SHOWN DIAGRAMMATICALLY. EXACT LOCATION AND METHOD OF SUPPORT SHALL BE DETERMINED IN THE FIELD, EXCEPT WHERE SPECIFIC DIMENSIONS AND DETAILS ARE SHOWN. ALL CONDUIT RUNS SHALL BE RIGIDLY SUPPORTED.
- ELECTRICAL CONTRACTOR SHALL CONFIRM ALL NEMA CONFIGURATIONS AND REQUIRED ELECTRICAL REQUIREMENTS OF ALL EQUIPMENT SPECIFICATIONS PRIOR TO ROUGH-IN.

EXISTING EQUIPMENT DESIGNATIONS

X	EXISTING TO BE REMOVED, REMOVE ALL ASSOCIATE CONDUIT AND CONDUCTORS
XM	EXISTING TO REMAIN
XN	EXISTING EQUIPMENT TO BE REPLACED WITH NEW, CONNECT NEW EQUIPMENT TO EXISTING CIRCUIT
XR	EXISTING EQUIPMENT TO BE RELOCATED, JUNCTION AND EXTEND EXISTING CONDUIT AND CONDUCTORS
XC	NEW EQUIPMENT TO BE CONNECTED TO NEAREST AVAILABLE BRANCH CIRCUIT, PROVIDE NEW BRANCH CIRCUITRY FROM NEAREST EXISTING DEVICE (TO REMAIN) TO NEW DEVICE AS REQUIRED
XL	NEW LOCATION OF EXISTING EQUIPMENT, JUNCTION AND EXTEND CONDUIT AND CONDUCTORS AS REQUIRED

ABBREVIATIONS

A/AMP	AMPERE	IMC	INTERMEDIATE METALLIC CONDUIT
AC	ALTERNATING CURRENT	JB	JUNCTION BOX
AF	AMPERE FRAME	KVA	KILOVOLT-AMPERE
AFB	ABOVE FINISHED FLOOR	KW	KILOWATT
AFG	ABOVE FINISHED GRADE	LTG	LIGHTING
ANC	AMPERE INTERRUPTING CAPACITY	MCB	MAIN CIRCUIT BREAKER
AL	ALUMINUM	MCC	MOTOR CONTROL CENTER
AT	AMPERE TRIP	MCC	MASSACHUSETTS ELECTRICAL CODE
ATS	AUTOMATIC TRANSFER SWITCH	MLO	MAIN LUGS ONLY
AWG	AMERICAN WIRE GAUGE	MTD	MOUNTED
C	CONDUIT	MTG	MOUNTING
CB	CIRCUIT BREAKER	NEC	NATIONAL ELECTRICAL CODE
CKT	CIRCUIT	No. #	NUMBER
CL	CENTERLINE	NS	NON-SYSTEM
CU	COPPER	NTS	NOT TO SCALE
DC	DIRECT CURRENT	PC	PLUMBING CONTRACTOR
DE	DUAL ELEMENT	PWR	POWER
DWG	DRAWING	RGS	RIGID STEEL CONDUIT
EC	ELECTRICAL CONTRACTOR	RMS	ROOT MEAN SQUARE VALUE
EMH	ELECTRICAL MANHOLE	RPM	REVOLUTIONS PER MINUTE
EMT	ELECTRIC METALLIC CONDUIT	SF	SQUARE FOOT
EWC	ELECTRIC WATER COOLER	SN	SOLID NEUTRAL
GRND	GROUND	ST	SHUNT TRIP CIRCUIT BREAKER
GC	GENERAL CONTRACTOR	SWBD	SWITCHBOARD
GE	GROUND-FAULT PROTECTION FOR EQUIPMENT (GFPE CB)	TYP	TYPICAL
GP	GROUND-FAULT PROTECTION FOR PERSONNEL (GFPI CB)	V	VOLTS
GFCI	GROUND-FAULT CIRCUIT INTERRUPTER	VA	VOLT-AMPERE
HP	HORSEPOWER	VFD	VARIABLE FREQUENCY DRIVE
HVAC	HEATING, VENTILATION AND AIR CONDITIONING	WP	WEATHERPROOF

ANNOTATIONS

ECH MECHANICAL EQUIPMENT TAG, REFER TO MECHANICAL EQUIPMENT COORDINATION SCHEDULE FOR ELECTRICAL REQUIREMENTS

2004 FEEDER TAG, NUMBER INDICATES AMPERE RATING OF FEEDER AND NUMBER OF WIRES. REFER TO FEEDER SCHEDULE FOR ADDITIONAL INFORMATION. (2) 5" EMPTY CONDUIT ONLY SHALL BE PROVIDED WITH PULL STRING

112.1 EQUIPMENT TAG, REFER TO EQUIPMENT SCHEDULE FOR ADDITIONAL INFORMATION

7 SHEET NOTE TAG
*F INDICATES CALL OUT TO CORRESPONDING SHEET NOTE

7 REVISION TAG
*F INDICATES THE DETAIL REFERENCE NUMBER
*E101 INDICATES THE DRAWING ON WHICH THE DETAIL CAN BE FOUND

A SECTION "A-A", REFER TO DUCT/BANK OR CONDUIT SECTION DETAIL

SITE SYMBOLS

--- UNDERGROUND CONDUIT OR DUCT BANK, REFER TO SITE DETAILS FOR ADDITIONAL INFORMATION

HH ELECTRIC MANHOLE (MH) / HANDHOLE (HH), REFER TO DETAIL

MOTORS AND CONTROLS

M MOTOR, NUMERAL INDICATES HORSEPOWER

MS MANUAL MOTOR STARTER, RATED 20A, 250V, COORDINATE MOUNTING HEIGHT IN FIELD, MOUNTING HEIGHT SHALL NOT EXCEED 6'-7" AFF

DS DISCONNECT SWITCH RATED 30A, 3-POLE, IN NEMA TYPE 1 ENCLOSURE, UNLESS OTHERWISE NOTED
*3R INDICATES NEMA TYPE 3R ENCLOSURE
*2P INDICATES 2-POLE, SINGLE PHASE DISCONNECT
*60A INDICATES 60A SWITCH

FDS FUSED DISCONNECT SWITCH RATED 30A, 3-POLE, IN NEMA TYPE 1 ENCLOSURE, UNLESS OTHERWISE NOTED
*3R INDICATES NEMA TYPE 3R ENCLOSURE
*2P INDICATES 2-POLE, SINGLE PHASE DISCONNECT
*60AF INDICATES 60A FUSE SIZE
*40AT INDICATES 40A TRIP RATING

CB ENCLOSED CIRCUIT BREAKER IN NEMA 1 TYPE ENCLOSURE, UNLESS OTHERWISE NOTED
*30A INDICATES BREAKER RATING
*3R INDICATES NEMA TYPE 3R ENCLOSURE
*ST INDICATES SHUNT-TRIP

CONTROLS

CP INDICATES CONTROL PANEL
*VFD INDICATES VARIABLE FREQUENCY DRIVE
*RGAP INDICATES REMOTE GENERATOR ANNUNCIATOR PANEL

BRANCH CIRCUIT AND FEEDER SYMBOLS

HOMERUN TO PANELBOARD "PP1": CIRCUIT NUMBER "2" REFER TO PANEL SCHEDULE FOR BREAKER SIZE AND NUMBER OF POLES CONCEALED UNLESS OTHERWISE NOTED

NUMBER OF ARROWS INDICATES NUMBER OF INDIVIDUAL HOMERUNS "2", "4", AND "6" UNLESS NOTED OTHERWISE. WIRING FOR EACH CIRCUIT SHALL BE:
20A/1P - 1/2" 112.1/2" C
20A/2P - 3/16" 112.1/2" C
20A/3P - 4/16" 112.1/2" C
WIRING FOR MULTIPLE HOMERUNS MAY BE COMBINED IN CONDUIT IN ACCORDANCE WITH NEC REQUIREMENTS

HOMERUN FEEDER / BRANCH CIRCUIT CALLOUT:
INDICATES (3) #1 AWG (PHASE), (1) #1 AWG (NEUTRAL), (1) #6 GROUND IN A 1 1/2" CONDUIT

BRANCH CIRCUIT OR FEEDER CONCEALED UNLESS OTHERWISE NOTED. BRANCH CIRCUIT DIAGONAL LINES INDICATE NUMBER OF CONDUCTORS. GROUND WIRE(S) NOT INDICATED. MINIMUM SIZE CONDUCTOR #12 AWG AND 3/4" CONDUIT, UNLESS OTHERWISE NOTED.

S FLEXIBLE CONNECTION TO MOTOR OR EQUIPMENT

MISCELLANEOUS

UM UTILITY METER

MHS MUSHROOM HEAD PUSH BUTTON SWITCH

PS PUSH BUTTON SWITCH

PANELBOARD AND TERMINAL CABINET

P 120/208V PANEL, SURFACE MOUNTED, REFER TO PANEL SCHEDULES

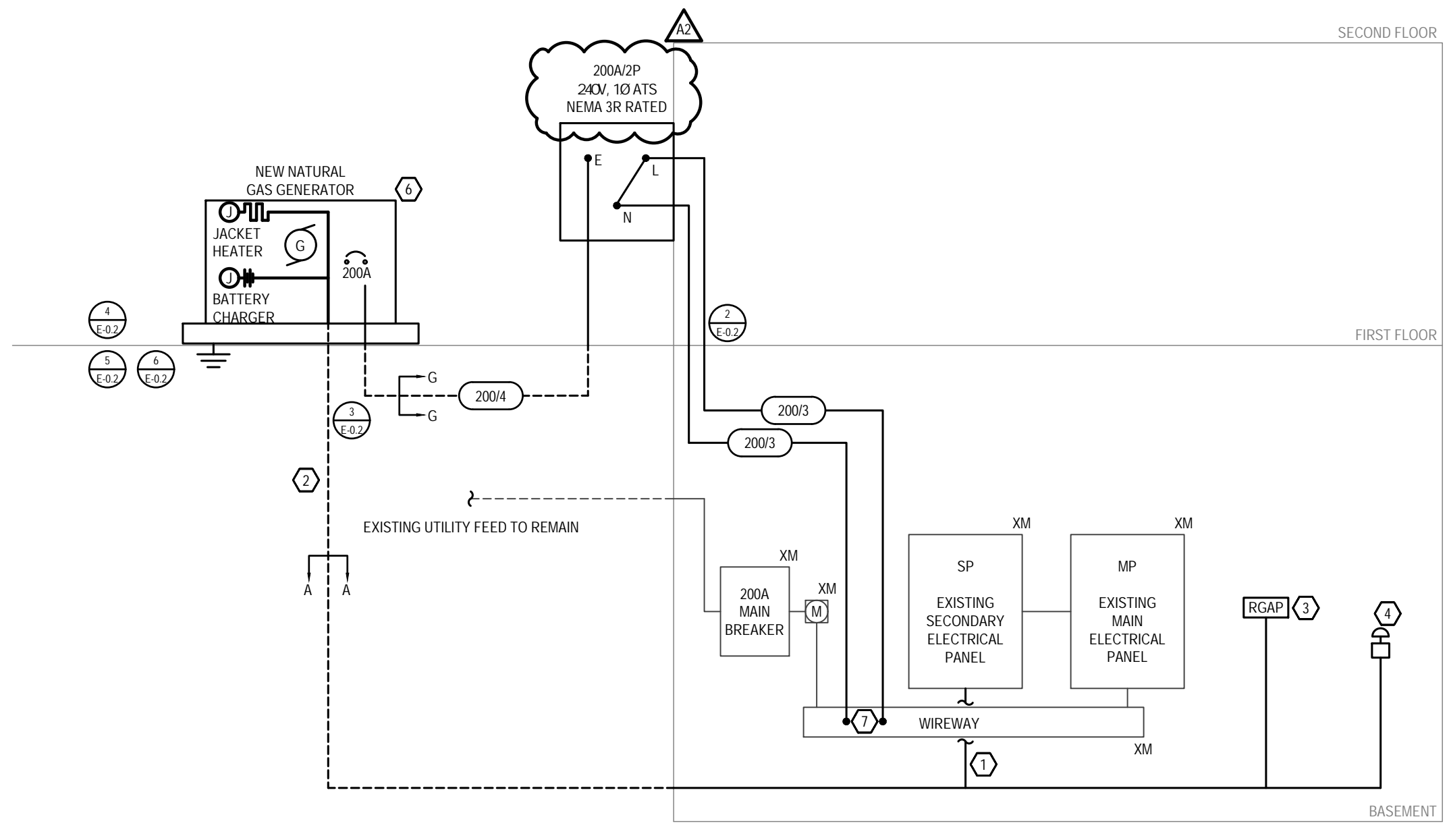
R 120/208V PANEL, RECESSED MOUNTED, REFER TO PANEL SCHEDULES

LEGEND OF FEEDER SIZES-COPPER CONDUCTORS (75°C)

FEEDER SYMBOL	CONDUCTORS (1Ø OR 3Ø, 3W) WITH GROUND	RACEWAY SIZE	CONDUCTORS (3Ø, 4W) WITH GROUND	RACEWAY SIZE	NOMINAL AMPERE RATING
603	3Ø6 & 1Ø10 GND	3/4" C	4Ø6 & 1Ø10 GND	1" C	60
604					
1003	3Ø6 & 1Ø8 GND	1 1/4" C			100
1004			4Ø3 & 1Ø8 GND	1 1/4" C	
1253	3Ø8 & 1Ø6 GND	1 1/2" C			125
1254			4Ø1 & 1Ø6 GND	1 1/2" C	
1503	3Ø10 & 1Ø6 GND	2" C	4Ø10 & 1Ø6 GND	2" C	150
1504					
2003	3Ø10 & 1Ø6 GND	2" C	4Ø90 & 1Ø6 GND	2" C	200
2004					
2253	3Ø10 & 1Ø4 GND	2" C	4Ø10 & 1Ø4 GND	2 1/4" C	225
2254					
2503	3-250kCML & 1Ø4 GND	2 1/2" C	4-250kCML & 1Ø4 GND	2 1/2" C	250
2504					
3003	3-350kCML & 1Ø4 GND	3" C	4-350kCML & 1Ø4 GND	3" C	300
3004					
4003	3-600kCML & 1Ø3 GND	3 1/2" C	4-600kCML & 1Ø3 GND	4" C	400
4004					
5003	6-250kCML & 2Ø2 GND	(2) 2 1/4" C	8-250kCML & 2Ø2 GND	(2) 2 1/4" C	500
5004					
6003	6-350kCML & 2Ø1 GND	(2) 3" C	8-350kCML & 2Ø1 GND	(2) 3" C	600
6004					
8003	6-600kCML & 2Ø10 GND	(2) 4" C	8-600kCML & 2Ø10 GND	(2) 4" C	800
8004					
10003	9-400kCML & 3Ø10 GND	(3) 3" C	12-400kCML & 3Ø10 GND	(3) 3" C	1000
10004					
12003	9-600kCML & 3Ø10 GND	(3) 4" C	12-600kCML & 3Ø10 GND	(3) 4" C	1200
12004					
16003	12-600kCML & 4Ø10 GND	(4) 4" C	16-600kCML & 4Ø10 GND	(4) 4" C	1600
16004					
20003	15-600kCML & 5-250kCML GND	(5) 4" C	20-600kCML & 5-250kCML GND	(5) 4" C	2000
20004					
25003	18-600kCML & 6-350kCML GND	(6) 4" C	24-600kCML & 6-350kCML GND	(6) 4" C	2500
25004					
30003	24-600kCML & 8-400kCML GND	(8) 4" C	32-600kCML & 8-400kCML GND	(8) 4" C	3000
30004					
35003	24-700kCML & 8-500kCML GND	(8) 4" C	32-700kCML & 8-500kCML GND	(8) 4" C	3500
35004					
40003	24-750kCML & 8-500kCML GND	(8) 4" C	32-750kCML & 8-500kCML GND	(8) 4" C	4000 (NOTE 3)
40004					

NOTES:

- ALL FEEDERS GREATER THAN 150 FEET IN LENGTH SHALL INCREASE TO THE NEXT AVAILABLE FEEDER TO ACCOMMODATE FOR VOLTAGE DROP.
- SERVICE FEEDERS FROM UTILITY TRANSFORMER TO SERVICE ENTRANCE EQUIPMENT SHALL NOT REQUIRE GROUND CONDUCTOR
- 4000A SERVICE FEEDERS FROM UTILITY TRANSFORMER TO SERVICE ENTRANCE EQUIPMENT SHALL BE 90 DEGREE RATED.



NEW WORK POWER RISER DIAGRAM
N.T.S.

- NOTES:**
- CONTRACTOR SHALL COORDINATE ALL NECESSARY SHUTDOWNS WITH OWNER AND IF NECESSARY, WITH UTILITY COMPANY
 - PROVIDE APPROPRIATE WIRING PER GENERATOR MANUFACTURER'S RECOMMENDATION AND CIRCUIT TO AVAILABLE BREAKER OR NEW CIRCUIT BREAKER IN SECONDARY ELECTRICAL PANEL FOR GENERATOR JACKET HEATER AND BATTERY CHARGER
 - SAME CONDUIT MAY BE USED TO CARRY CONDUCTORS FOR GENERATOR JACKET HEATER AND BATTERY CHARGER AS WELL AS EMERGENCY POWER OFF BUTTON AND REMOTE GENERATOR ANNUNCIATOR PANEL. APPROPRIATE CONDUCTORS SHALL BE USED AS SPECIFIED BY EQUIPMENT MANUFACTURERS. ALL CONDUCTOR INSULATION SHALL BE RATED FOR THE HIGHEST VOLTAGE OF THE VARIOUS CIRCUITS.
 - ELECTRICAL CONTRACTOR TO COORDINATE LOCATION OF GENERATOR REMOTE ANNUNCIATOR WITH OWNER'S REPRESENTATIVE AND ENGINEER PRIOR TO ROUGHING IN BRANCH CIRCUITRY
 - GENERATOR REMOTE EMERGENCY POWER OFF (EPO) PUSH BUTTON. COORDINATE EXACT LOCATION NEAR EXISTING SWITCHGEAR WITH OWNER'S REPRESENTATIVE. PROVIDE CLEAR LABELING TO INDICATE USE
 - ELECTRICAL CONTRACTOR SHALL CONFIRM EXISTING BRANCH CIRCUITRY, IN FIELD, AND MATCH WIRE SIZE ACCORDINGLY
 - 50 KW / 43KVA 120/240 VOLT NATURAL GAS GENERATOR WITH WEATHERPROOF, LEVEL 2 SOUND ATTENUATED ENCLOSURE BY GENERAC, MODEL NO. SG050NA, ALTERNATOR MODEL NO. A006004N21 OR EQUAL.
 - THE EXISTING 200AMP SERVICE FEEDER SHALL BE TAPPED AND NEW CONDUCTORS PROVIDED TO THE PROPOSED ATS AND CONNECTED TO THE NORMAL FEEDER LUGS.

EXISTING PANEL 'MP', 225 AMP, 120/208 VOLT, 1-PHASE, 3-WIRE & GND
INTERRUPTING CAPACITY: 22,000 AMPS RMS SYM MAIN: 200A M.C.B. MOUNTING: SURFACE
CB TYPE: G - INDICATES GFCI, L - INDICATES BREAKER LOCK, GE - INDICATES GFPE, S - INDICATES SHUNT TRIP, A - INDICATES ARC FAULT

LOAD DESCRIPTION	CB/TYPE	CIRC NO.	KVA LOAD			CIRC NO.	CB/TYPE	LOAD DESCRIPTION
			A	B	C			
MAIN		1	0.00			2	150	???
		3		0.00		4		???
AIR HANDLER - ATTIC		5				6	20	???
		7	0.00			8		???
ATTIC EXHAUST FAN		9		0.00		10		FIRE ALARM
CLOCK IN REF ROOM - WALL SCONCES		11			0.00	12		NEW DUPLEX REC IN LOUNGE
ATTIC GFI PLUG		13	0.00			14		NEW DUPLEX REC IN LOUNGE
BOILER LEAD		15		0.00		16		COMPUTER DESK OUTLETS
BOILER 2		17			0.00	18		FLOOR OUTLETS
SYSTEM PUMPS		19	0.00			20		FLOOR OUTLETS
AIR COMPRESSOR - TRANE YARD		21		0.00		22		STACK LIGHTS
		23			0.00	24		STACK LIGHTS
AIR COMPRESSOR - #1 YARD		25	0.00			26		LIGHT CONTROL
		27		0.00		28		LIGHT CONTROL - CHANDALIER
AIR COMPRESSOR - #2 YARD		29			0.00	30		LIGHT CONTROL - PADDLE FANS
		31	0.00			32		LIGHT CONTROL
AIR COMPRESSOR - ROOF/CHILDREN'S ROOM		33		0.00		34		OUTDOOR FRONT AND DOOR
		35			0.00	36		SIGN AND BACK DOOR LIGHT
AIR COMPRESSOR - ROOF		37	0.00			38		FOYER
		38			0.00	40		STACK OUTLETS
PHASE A	0.00							
PHASE B	0.00							
PHASE C	0.00							
			TOTAL LOAD 0.00 KVA			NOTES: PROVIDE WITH FEED-THRU LUGS		

SECTION 1

EXISTING PANEL 'SP', 225 AMP, 120/208 VOLT, 1-PHASE, 3-WIRE & GND
INTERRUPTING CAPACITY: 22,000 AMPS RMS SYM MAIN: 200A M.C.B. MOUNTING: SURFACE
CB TYPE: G - INDICATES GFCI, L - INDICATES BREAKER LOCK, GE - INDICATES GFPE, S - INDICATES SHUNT TRIP, A - INDICATES ARC FAULT

LOAD DESCRIPTION	CB/TYPE	CIRC NO.	KVA LOAD			CIRC NO.	CB/TYPE	LOAD DESCRIPTION
			A	B	C			
CHILDREN'S RUMBACK OFFICE/BSMINT STAIR		1	0.00			2		MAIN
		3		0.00		4		GENERATOR BATTERY CHARGER
BOILER ROOM LIGHTS		7	0.00			8		MAIN BATHROOM LIGHTS
CRAWLSPACE LIGHTS		9			0.00	10		READING ROOM PLUGS
MAIN ROOM PLUGS		11			0.00	12		BAR COMPUTER PLUGS
		13	0.00			14		MAIN DESK LEFT PLUGS
BASEMENT LIGHTS		15		0.00		16		GENERATOR JACKET HEATER
MAIN PLUGS		19	0.00			18		
2ND FLOOR LIGHTS/CLOCK TOWER LIGHTS		21		0.00		22		MAIN DESK RIGHT PLUGS
		23			0.00	24		
		25	0.00			26		
		27		0.00		28		
QUAD DATA		29			0.00	30		SUB PANEL
PHASE A	0.00							
PHASE B	0.00							
PHASE C	0.00							
			TOTAL LOAD 0.00 KVA			NOTES: PROVIDE WITH FEED-THRU LUGS		

SECTION 1

* REPLACE EXISTING CKT BKR WITH NEW 3Ø, 2Ø8 VOLT, 2-POLE CIRCUIT BREAKER, COMPATIBLE WITH EXISTING PANEL "SP". PANEL "SP" WAS MANUFACTURED BY MURRAY.

Seal:

NOT FOR CONSTRUCTION

BLW
BLW Engineers, Inc.
311 Great Road, Post Office Box 1551
Littleton, Massachusetts 01460
T: 978.486.4301 F: 978.428.0067
www.blwengineers.com
HVAC Electrical Plumbing Fire Protection

Client:
TOWN OF MANCHESTER-BY-THE-SEA
10 CENTRAL ST
MANCHESTER-BY-THE-SEA, MA 01944

Submission:
BID DOCS 10/4/24
ADDENDUM #2 - Dwg Revs 10/30/24

Revision:

Project:
PUBLIC LIBRARY GENERATOR PROJECT
15 UNION ST
MANCHESTER-BY-THE-SEA, MA 01944

THIS MATERIAL IS CONFIDENTIAL AND MAY NOT BE DISCLOSED WITHOUT PRIOR WRITTEN AUTHORIZATION FROM BLW ENGINEERS INC. COPYRIGHT BLW ENGINEERS INC.

Project No.: 24069
Drawn By: RG
Checked By: CM
Scale: As Noted

Title:
LEGEND, SPECIFICATION, RISERS, PANEL SCHEDULES

Drawing No.:
E-0.1

Seal:

NOT FOR
CONSTRUCTION



BLW Engineers, Inc.
311 Great Road, Post Office Box 1551
Littleton, Massachusetts 01460
T: 978.486.4301 F: 978.428.0067
www.blwengineers.com
HAC "Electrical" Plumbing "Fire Protection"

Client:

**TOWN OF
MANCHESTER-BY-THE-SEA**
10 CENTRAL ST
MANCHESTER-BY-THE-SEA, MA 01944

Submission:

BID DOCS 10/4/24
ADDENDUM #2 - Dwg Revs 10/30/24

Revision:

Project:

**PUBLIC LIBRARY
GENERATOR PROJECT**
15 UNION ST
MANCHESTER-BY-THE-SEA, MA 01944

THIS MATERIAL IS CONFIDENTIAL
AND MAY NOT BE DISCLOSED
WITHOUT PRIOR WRITTEN AUTHORIZATION
FROM BLW ENGINEERS INC.
COPYRIGHT BLW ENGINEERS INC.

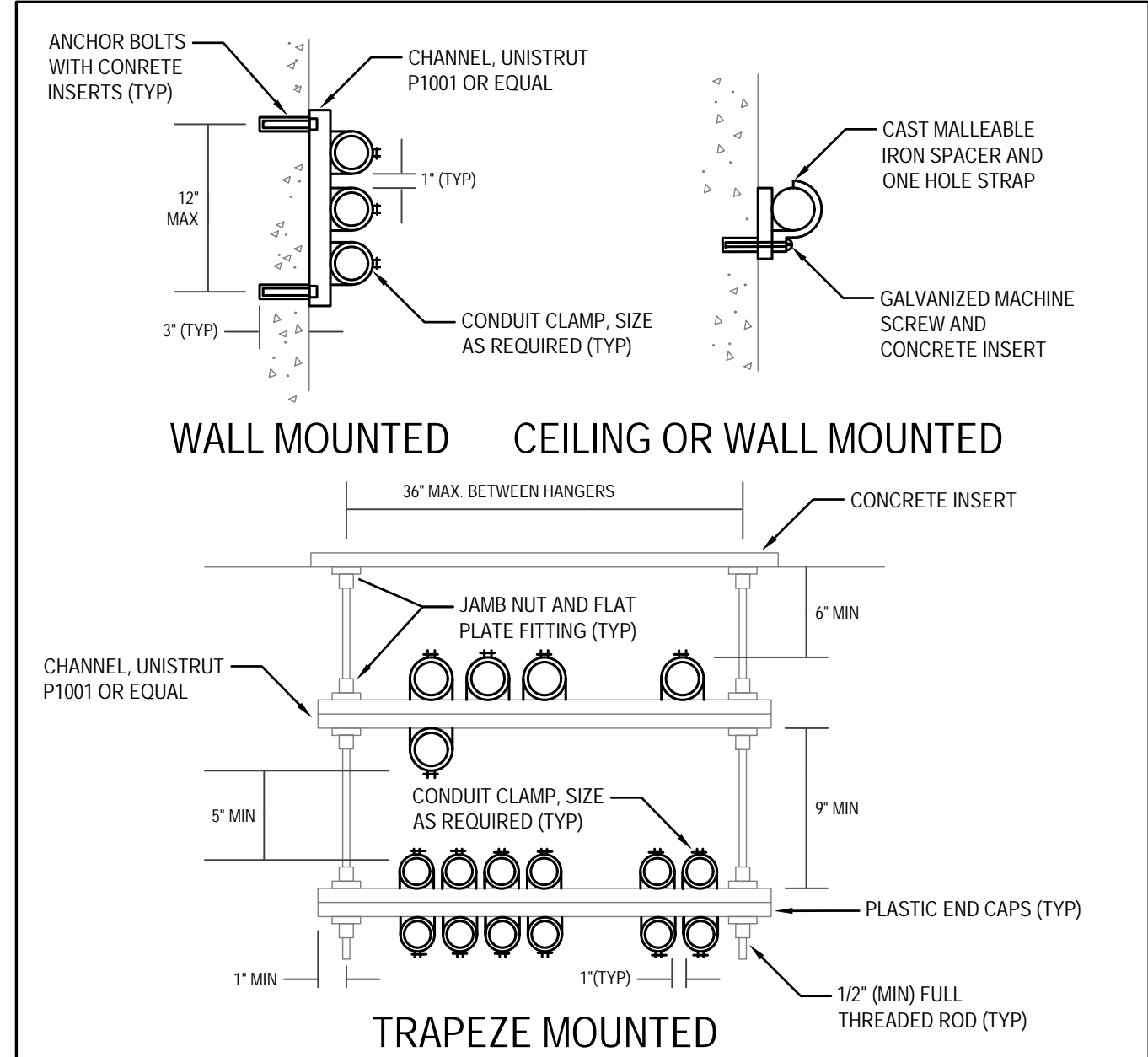
Project No.: 24069
Drawn By: RG
Checked By: CM
Scale: As Noted

Title:

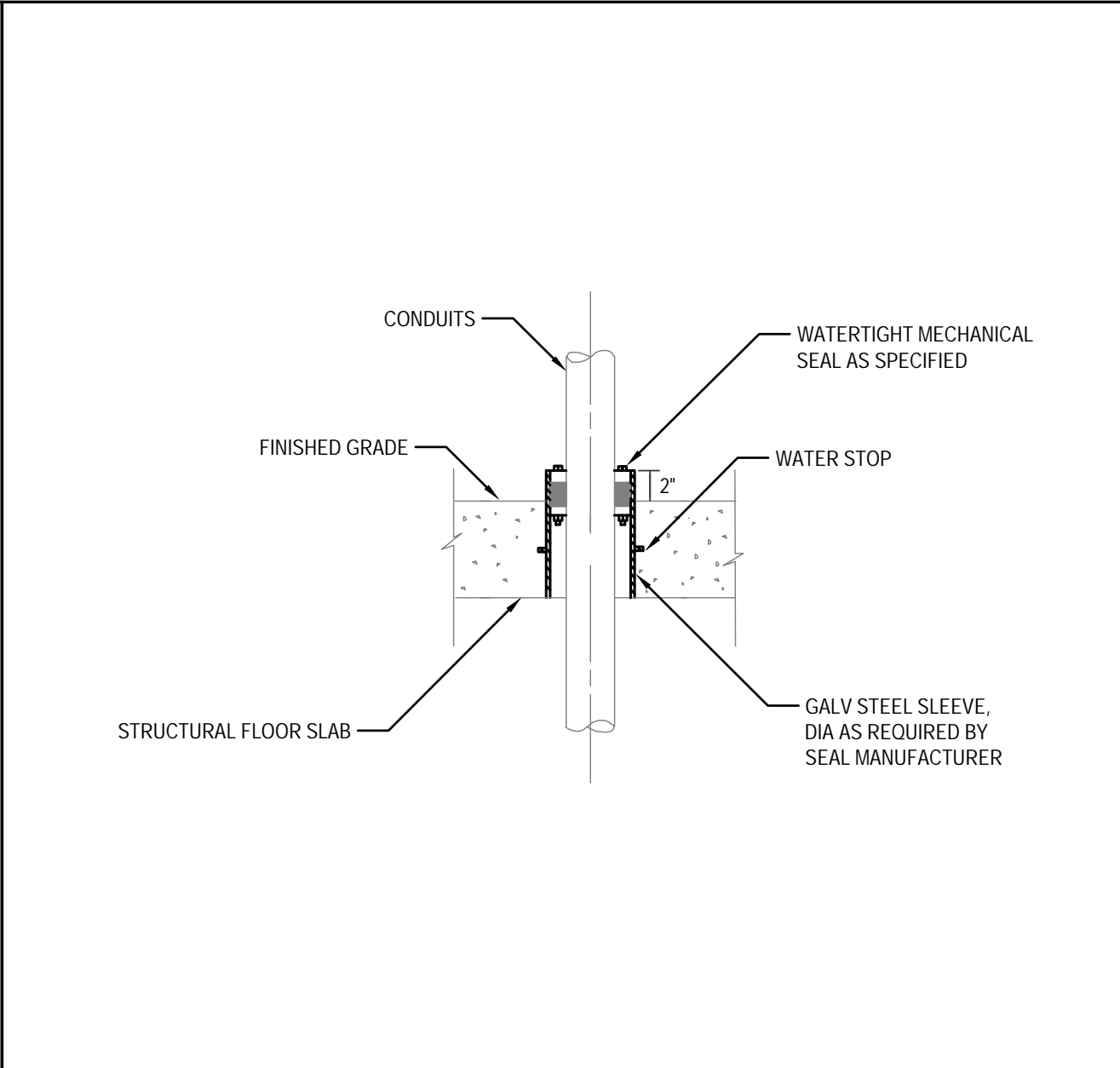
DETAILS

Drawing No.:

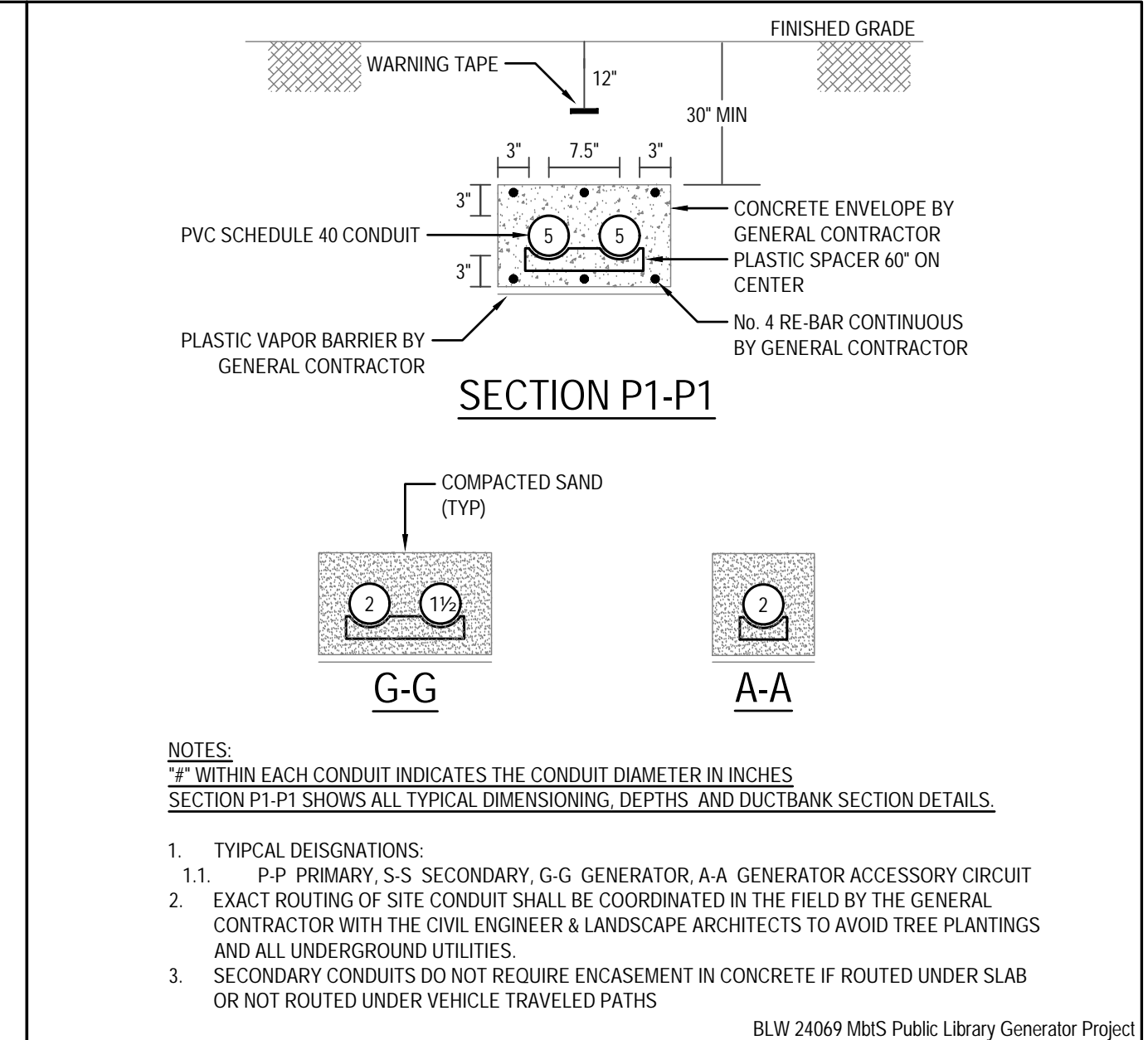
E-0.2



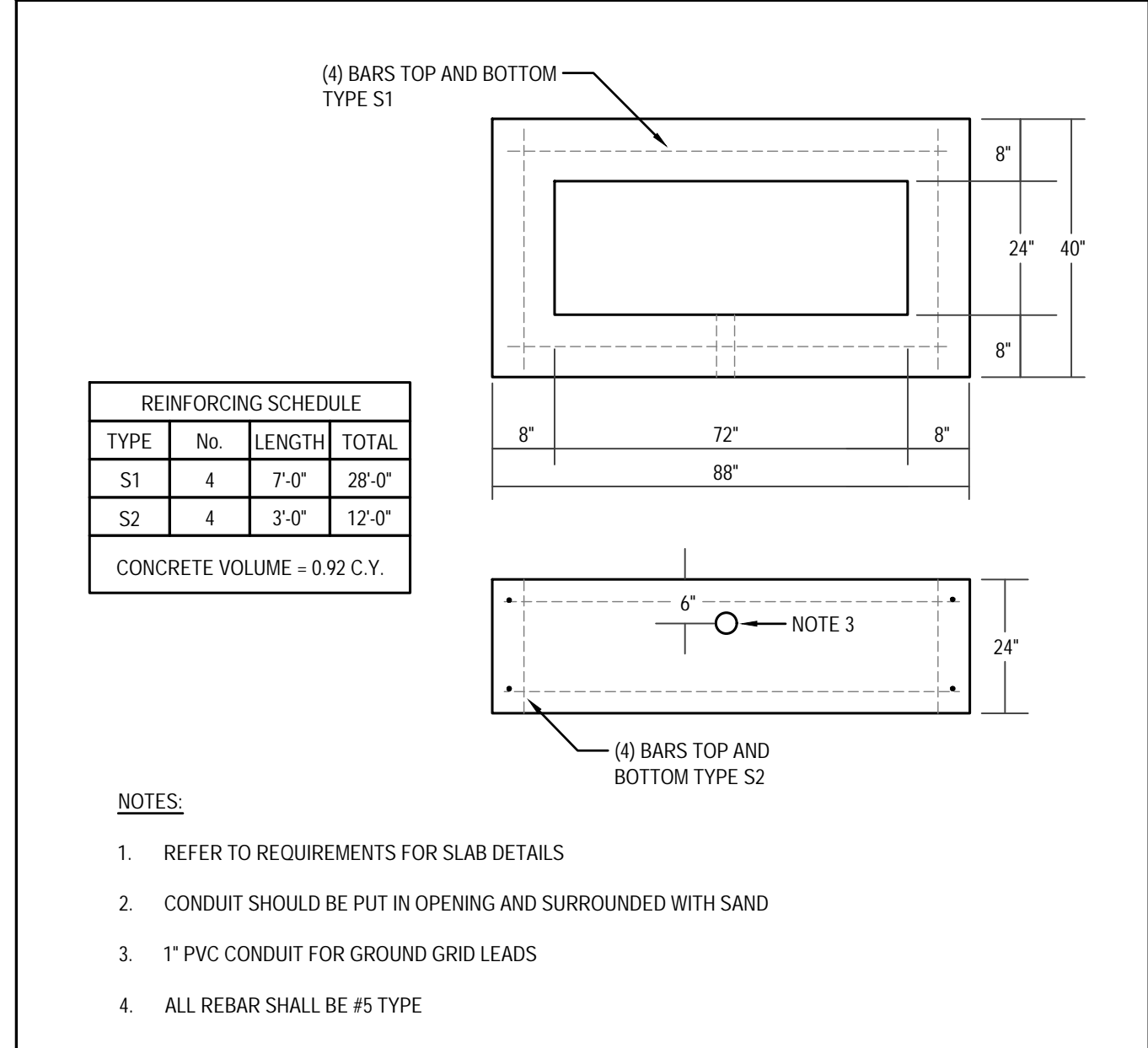
1 CONDUIT MOUNTING DETAIL N.T.S.



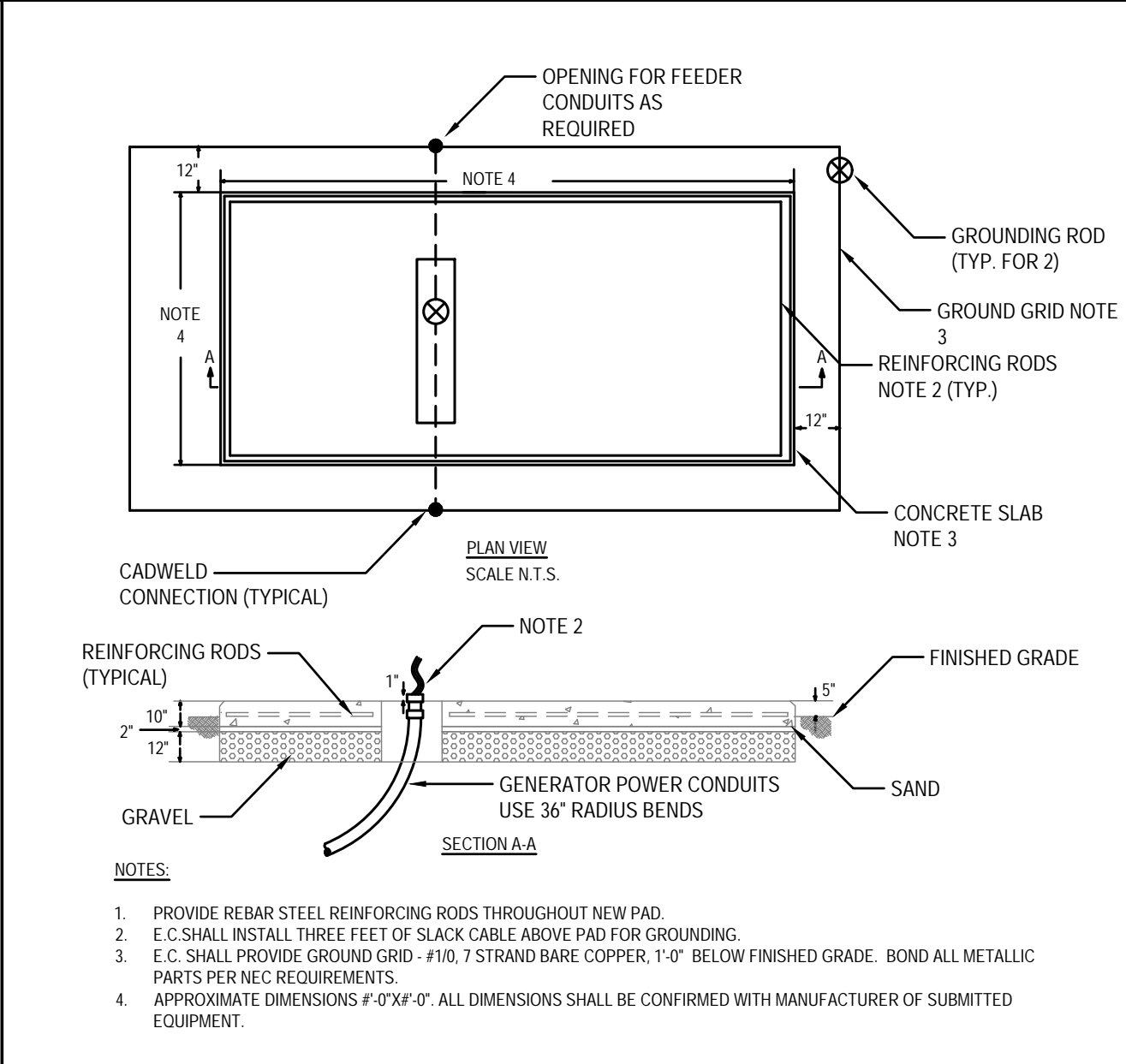
2 CONDUIT PENETRATION DETAIL N.T.S.



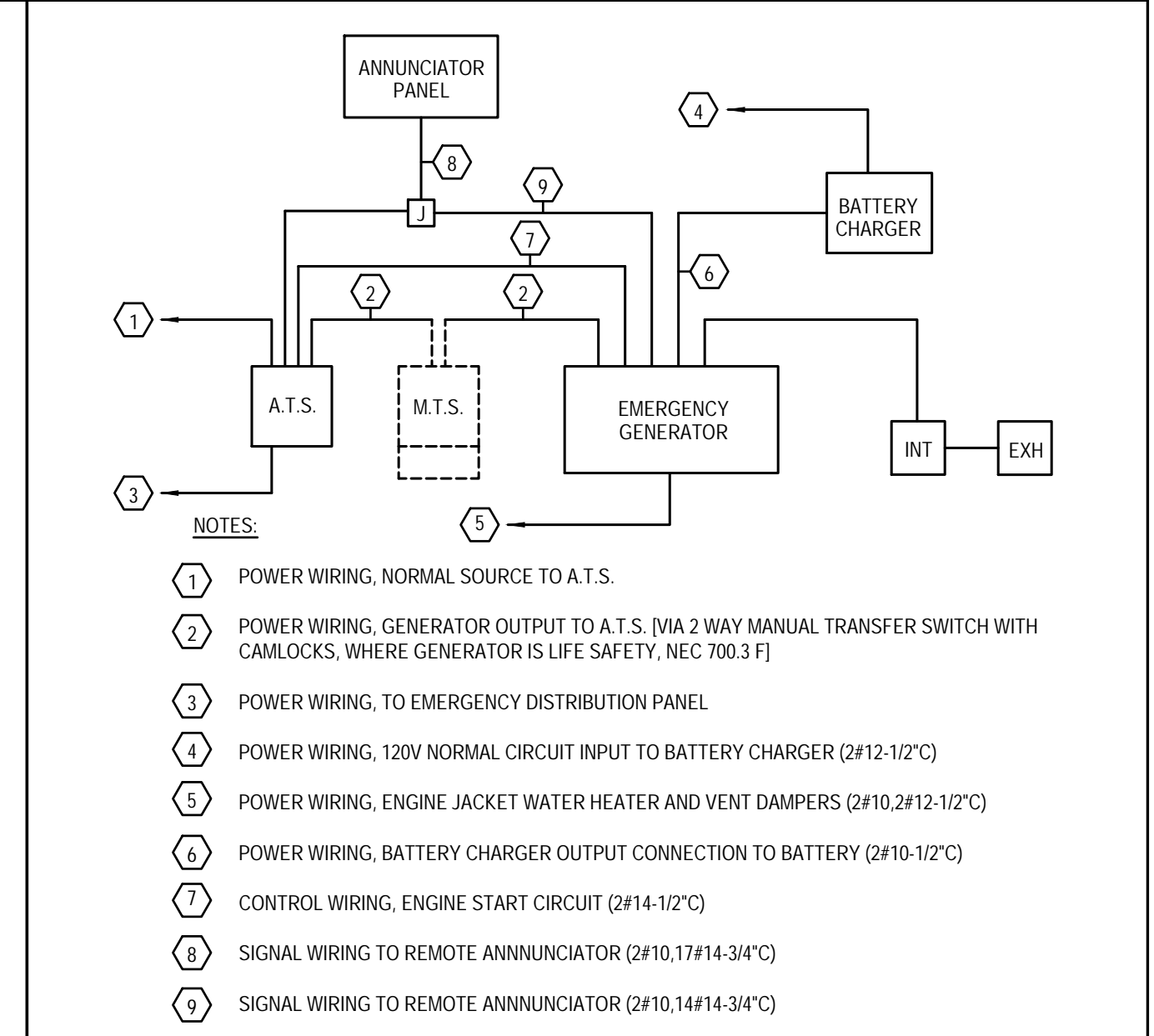
3 DUCTBANK SECTION DETAIL N.T.S.



4 CONCRETE PIT FOR PAD DETAIL N.T.S.



5 EMERGENCY GENERATOR PAD DETAIL N.T.S.



6 EMERGENCY GENERATOR WIRING DIAGRAM N.T.S.

BLW 24069 M&S Public Library Generator Project

1 2 3 4 5 6 7 8 9 10 11

A
B
C
D
E
F
G
H
J
K
L

NOTES
1. APPROPRIATE CONDUCTORS FOR GENERATOR BATTERY CHARGER AND JACKET HEATER, EMERGENCY POWER OFF BUTTON, AND REMOTE GENERATOR ANNUNCIATOR PANEL SHALL BE USED AS SPECIFIED BY EQUIPMENT MANUFACTURERS. ALL CONDUCTOR INSULATION SHALL BE RATED FOR THE HIGHEST VOLTAGE OF THE VARIOUS CIRCUITS.

Seal:
NOT FOR CONSTRUCTION

BLW
BLW Engineers, Inc.
311 Great Road, Post Office Box 1551
Littleton, Massachusetts 01460
T: 978.486.4301 F: 978.428.0067
www.blwengineers.com
HVAC • Electrical • Plumbing • Fire Protection

Client:
TOWN OF MANCHESTER-BY-THE-SEA
10 CENTRAL ST
MANCHESTER-BY-THE-SEA, MA 01944

Submission:
BID DOCS 10/4/24
ADDENDUM #2 - Dwg Revs 10/30/24

Revision:

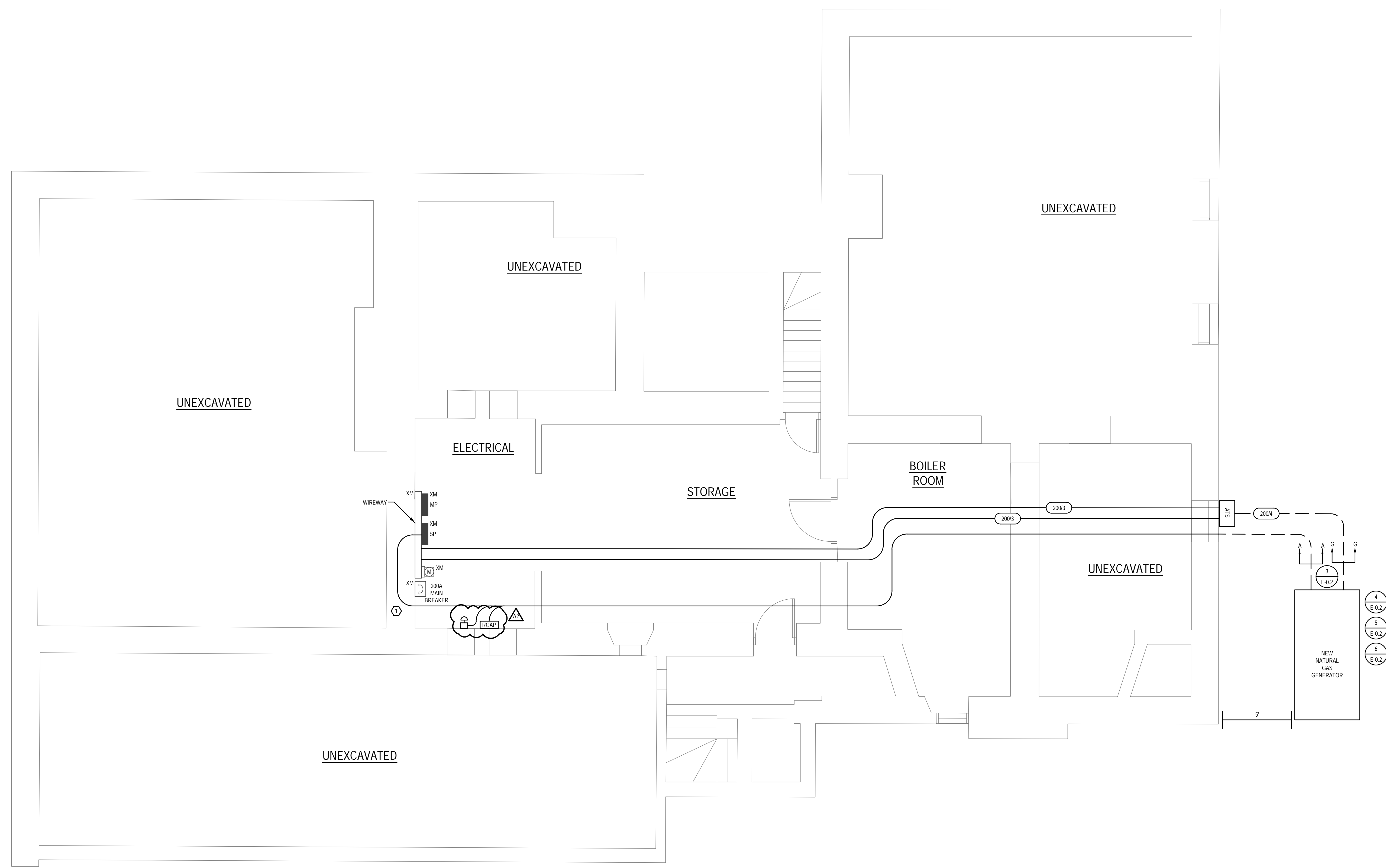
Project:
PUBLIC LIBRARY GENERATOR PROJECT
15 UNION ST
MANCHESTER-BY-THE-SEA, MA 01944

THIS MATERIAL IS CONFIDENTIAL AND MAY NOT BE DISCLOSED WITHOUT PRIOR WRITTEN AUTHORIZATION FROM BLW ENGINEERS INC. COPYRIGHT BLW ENGINEERS INC.

Project No.: 24069
Drawn By: RG
Checked By: CM
Scale: As Noted

Title:
SITE PLAN/BASEMENT

Drawing No.:
E-1.0

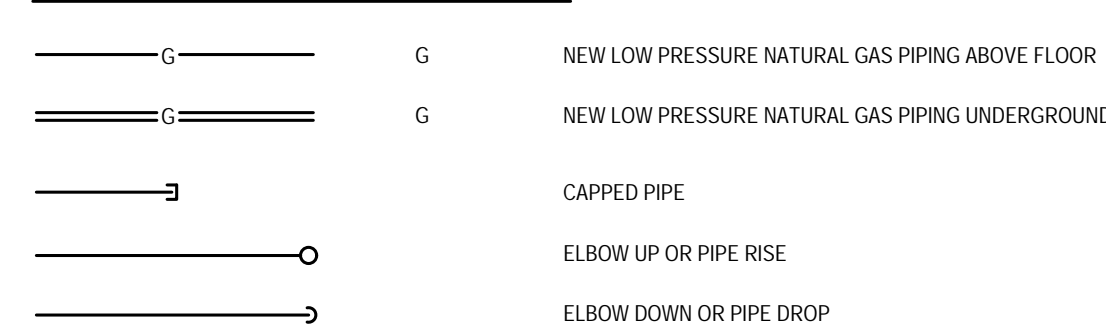


1 Site Plan/Basement
SCALE: 1/4"=1'-0"

PLUMBING GENERAL NOTES

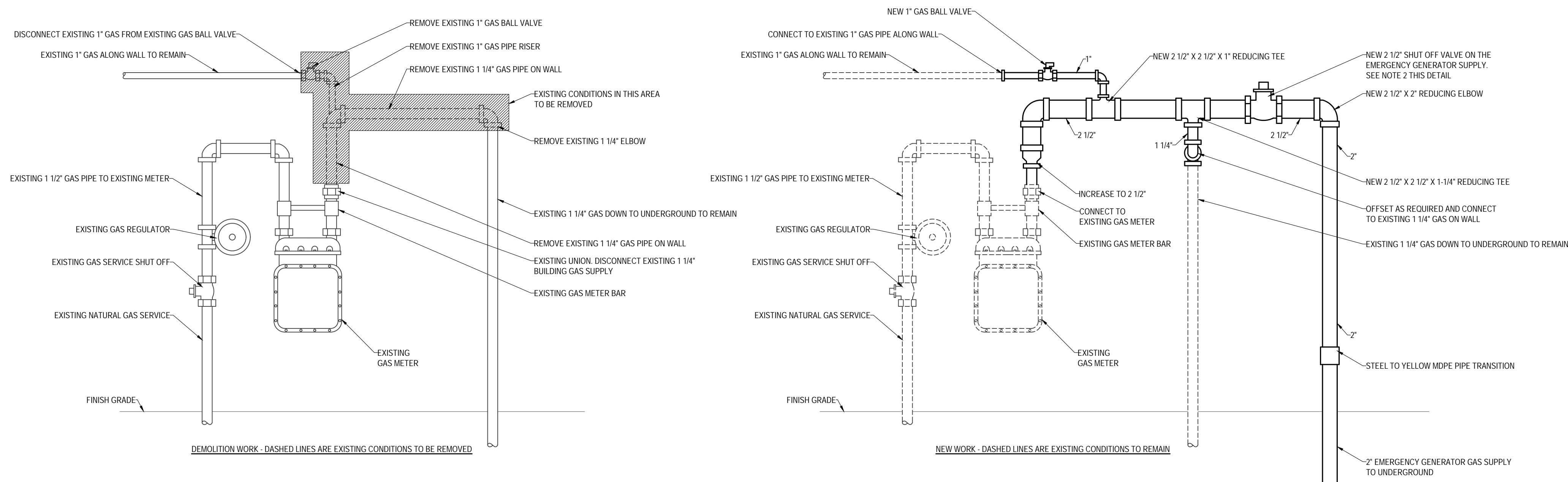
- ALL PLUMBING WORK SHALL BE DONE IN ACCORDANCE WITH THE MASSACHUSETTS STATE PLUMBING CODE.
- CAREFULLY COORDINATE LOCATION OF PIPING WITH ALL OTHER TRADES.
- ALL PIPING SHOWN DIAGRAMMATICALLY AND EXACT LOCATION SHALL BE DETERMINED IN THE FIELD.
- ALL PIPING SHALL BE RUN CONCEALED ABOVE CEILINGS, IN WALLS AND IN CHASES, UNLESS OTHERWISE NOTED.
- NO STRUCTURAL MEMBERS SHALL BE CUT WITHOUT THE APPROVAL OF THE ENGINEER.
- ALL PIPING SHALL BE SUPPORTED FROM BUILDING STRUCTURE.
- ALL PIPING SHALL BE NEW, INSTALLED PARALLEL TO BUILDING LINES AND PITCHED TO LOW POINTS.
- PLUMBING CONTRACTOR SHALL PROVIDE FIRE STOPPING FOR ALL PENETRATIONS THRU FIRE WALLS AND FIRE RATED SEPARATIONS. COORDINATE WITH ARCHITECTURAL DRAWINGS FOR THESE AREAS.
- PLUMBING CONTRACTOR SHALL BE FURNISH, INSTALL AND MAINTAIN ALL SCAFFOLDING, HOISTING EQUIPMENT DERRICKS, ETC., NECESSARY FOR INSTALLATION OF WORK.
- ALL PLUMBING PIPING AND DRAINS SHALL BE KEPT CLEAR OF BLOCKAGE WHILE CONSTRUCTION IS UNDERWAY. ALL PLUMBING PIPING SHALL BE DEBURRED BEFORE JOINTS ARE MADE.
- ALL PENETRATIONS THRU OUTSIDE WALLS SHALL BE DONE WITH LINK-SEAL WATERTIGHT SLEEVES AND SEALS OR APPROVED EQUAL.
- ALL PENETRATIONS THRU FIRE RATED WALLS AND FLOORS SHALL BE DONE WITH LINK-SEAL FIRE RATED SLEEVES AND SEALS OR APPROVED EQUAL.
- THE PLUMBING CONTRACTOR SHALL PROVIDE ALL CUTTING AND PATCHING IN ORDER TO ACCOMMODATE THE PLUMBING WORK. PATCHING SHALL BE MADE TO MATCH THE EXISTING CONDITIONS AND TO THE SATISFACTION OF THE OWNER.
- ALL EXISTING CONDITIONS SHOWN ARE APPROXIMATE ONLY AND ARE NOT INTENDED TO SHOW EXACT EXISTING CONDITIONS. ALL EXISTING CONDITIONS SHALL BE VERIFIED BY THE PLUMBING CONTRACTOR IN THE FIELD. ALL POINTS OF CONNECTION TO EXISTING SYSTEMS SHALL BE DETERMINED IN THE FIELD BY THE PLUMBING CONTRACTOR. THE PLUMBING CONTRACTOR SHALL BE RESPONSIBLE FOR CONDUCTING A FIELD SURVEY OF ALL EXISTING PLUMBING CONDITIONS IN ORDER TO IDENTIFY THE EXACT LOCATIONS AND SIZES OF THE EXISTING PLUMBING PIPING SYSTEMS.
- PRIOR TO BID, THE CONTRACTOR SHALL VISIT THE SITE AND FAMILIARIZE HIMSELF WITH ALL ASPECTS OF THE WORK AND ALL CONDITIONS TO WHICH THE WORK WILL BE INSTALLED. ANY DISCREPANCIES BETWEEN THE WORK SHOWN ON THE DRAWINGS AND ANY CONDITIONS SHALL BE SUBMITTED TO THE ARCHITECT IN WRITING. FAILURE OF THE CONTRACTOR TO FAMILIARIZE HIMSELF WITH ALL EXISTING CONDITIONS AND THERE RELATION TO THE NEW WORK SHALL NOT BE ACCEPTED AS A CAUSE FOR ANY EXTRA CHARGES TO THE CONTRACT.
- ALL FINAL GAS CONNECTIONS TO GAS FIRED EQUIPMENT SHALL BE MADE WITH A SHUT OFF VALVE, UNION AND DIRT LEG.
- DIRT LEGS SHALL BE PROVIDED AT THE BASE OF ALL VERTICAL GAS PIPING. DIRT LEGS SHALL BE FULL PIPE SIZE AND SHALL BE A MINIMUM OF 6" IN LENGTH WITH A THREADED CAP.
- THE LOCATIONS OF ALL GAS FIRED EQUIPMENT AND THE GAS CONNECTIONS ARE APPROXIMATE ONLY AND SHALL BE DETERMINED IN THE FIELD. THE PLUMBING CONTRACTOR SHALL COORDINATE WITH THE HVAC CONTRACTOR FOR LOCATIONS OF ALL GAS FIRED EQUIPMENT AND THE GAS CONNECTION LOCATIONS.
- THE LOCATIONS OF THE GAS METERS AND GAS SERVICE SHOWN ARE APPROXIMATE ONLY AND WILL VARY IN THE FIELD. THE PLUMBING CONTRACTOR SHALL BE RESPONSIBLE FOR COORDINATING WITH THE GAS COMPANY FOR THE EXACT LOCATIONS AND CONFIGURATIONS OF THE GAS METERS AND THE UNDERGROUND GAS SERVICE.
- THE PLUMBING CONTRACTOR SHALL SHUT DOWN AND PURGE THE EXISTING NATURAL GAS PIPING SYSTEM IN ORDER TO ACCOMMODATE THE WORK. THE PLUMBING CONTRACTOR SHALL COORDINATE WITH THE GAS COMPANY AND THE BUILDING OWNER FOR THE SCHEDULE OF THE EXISTING GAS PIPING SYSTEM SHUT DOWN. NO WORK SHALL BEGIN WITHOUT THIS COORDINATION. PERIODS OF GAS SYSTEM SHUT DOWN SHALL BE APPROVED BY THE BUILDING OWNER. PRIOR TO PERFORMING ANY WORK ON THE EXISTING GAS PIPING SYSTEM THE EXISTING GAS PIPING SYSTEMS SHALL BE PURGED OF ALL GAS IN ACCORDANCE WITH NFPA-54 AND THE MASSACHUSETTS STATE FUEL GAS CODE INCLUDING ALL AMENDMENTS.

PLUMBING GENERAL LEGEND



PLUMBING SPECIFICATIONS

- CAREFULLY COORDINATE LOCATION OF PIPING WITH ALL OTHER TRADES AND ALL EXISTING CONDITIONS AT THE SITE.
- DIELECTRIC INSULATING FITTINGS SHALL BE USED WHERE PIPES OF DISSIMILAR METALS ARE CONNECTED.
- ALL PIPING SHALL BE NEW, INSTALLED PARALLEL TO BUILDING LINES AND PITCHED TO LOW POINTS.
- CONTRACTOR SHALL VISIT THE SITE AND VERIFY ALL EXISTING CONDITIONS AND COORDINATE BEST ROUTE OF NEW PIPING AND LOCATIONS OF NEW EQUIPMENT IN COORDINATION WITH THE WORK OF ALL OTHER TRADES AND ALL EXISTING CONDITIONS TO INSURE THAT ALL WORK WILL FIT IN THE SPACE WITH NO INTERFERENCES.
- ALL NEW SYSTEMS SHALL BE TESTED, BALANCED AND ADJUSTED TO INSURE PROPER OPERATION AND CODE COMPLIANT INSTALLATION. PIPING AND EQUIPMENT SHALL BE TESTED IN ACCORDANCE WITH THE STATE PLUMBING CODE.
- FOR PIPES 2" AND SMALLER ADJUSTABLE STEEL SWIVEL RING (BAND TYPE) HANGER SHALL BE USED. FOR PIPES 2-1/2" AND LARGER ADJUSTABLE STEEL CLEVIS HANGERS SHALL BE USED. FOR VERTICAL PIPES, STEEL RISER CLAMP SIZED TO FIT OUTSIDE DIAMETER OF PIPE SHALL BE USED. PIPE SIZES 2" AND SMALLER SHALL USE 3/8" THREADED RODS AND BEAM CLAMPS. PIPE SIZES 2-1/2" AND LARGER SHALL USE 5/8" THREADED RODS AND BEAM CLAMPS. PIPE HANGERS SHALL BE SPACED IN ACCORDANCE WITH THE STATE PLUMBING CODE. PIPE HANGERS, SUPPORTS AND RODS SHALL BE GALVANIZED.
- ALL PIPING MATERIALS, FITTINGS, VALVES, UNIONS, HANGERS, EQUIPMENT, INSTALLATION AND ALL ASPECTS OF THE PLUMBING WORK SHALL BE AS APPROVED BY THE MASSACHUSETTS PLUMBING AND FUEL GAS CODES.
- THE PLUMBING CONTRACTOR IS RESPONSIBLE FOR ANY WORK ASSOCIATED WITH CUTTING, CORING AND PATCHING WALLS, FLOORS AND CEILINGS IN ORDER TO PERFORM THE PLUMBING WORK. NO STRUCTURAL BEAMS OR STRUCTURAL OR BUILDING SUPPORTS SHALL BE CUT. ALL BUILDING CONDITIONS THAT ARE CUT OR CORED SHALL BE PATCHED TO MATCH THE FINISHED BUILDING CONDITIONS AND TO THE SATISFACTION OF THE OWNER.
- ALL VALVES SHALL BE PROVIDED WITH TAGS INDICATING TYPE OF SERVICE. ALL PIPING OF THE VARIOUS PIPING SYSTEMS SHALL BE LABELED WITH ADHESIVE DECALS INDICATING TYPE OF SERVICE. PIPE SYSTEM LABELS SHALL BE PER ASME A13.1 AND STATE PLUMBING CODE STANDARDS, AT 10 FOOT LENGTHS ALONG THE PIPE RUNS, ON EACH SIDE OF WALL/CEILING PENETRATIONS.
- THE PLUMBING CONTRACTOR SHALL SUBMIT MANUFACTURERS SHOP DRAWINGS FOR ALL PROPOSED PLUMBING MATERIALS, VALVES AND EQUIPMENT SHALL BE SUBMITTED TO THE PLUMBING ENGINEER FOR WRITTEN APPROVAL OF ALL PROPOSED PLUMBING MATERIALS, VALVES AND EQUIPMENT SHALL BE RECEIVED FROM THE PLUMBING ENGINEER PRIOR TO THE COMMENCEMENT OF ANY PLUMBING WORK.
- LOW PRESSURE GAS PIPING (1/4" W.C. OR LESS) 4" AND SMALLER SHALL BE SCHEDULE 40 BLACK STEEL WITH THREADED ENDS AND SCREW FITTINGS. LOW PRESSURE GAS PIPING (1/4" W.C. OR LESS) LARGER THAN 4" SHALL BE SCHEDULE 40 BLACK STEEL WITH PLAIN END WELDED PIPE AND FITTINGS.
- SHUT OFF VALVES ON GAS PIPE 2" AND SMALLER SHALL BE GAS SERVICE RATED BALL VALVES. SHUT OFF VALVES LARGER THAN 2" SHALL BE IRON FLUG VALVES WITH FLANGED ENDS.
- THE LOCATIONS OF GAS FIRED EQUIPMENT AND THE LOCATIONS OF THE GAS PIPE CONNECTIONS ARE APPROXIMATE ONLY. THE PLUMBING CONTRACTOR SHALL COORDINATE IN THE FIELD WITH THE GAS FIRED EQUIPMENT AS REQUIRED. REDUCE ALL PIPE CONNECTIONS AS THE EQUIPMENT AS REQUIRED.
- ALL GAS PIPE, FITTINGS AND VALVES EXPOSED TO OUTDOORS SHALL BE PAINTED WITH ONE COAT OF CORROSION RESISTANT METAL PIPE PRIMER AND ONE FINAL COAT OF CORROSION RESISTANT METAL PIPE FINAL PAINT. PAINT COLOR SHALL BE GRAY. ALL SURFACES SHALL BE CLEANED AND PREPARED IN ACCORDANCE WITH THE PRIMER AND PAINT MANUFACTURERS WRITTEN INSTALLATION INSTRUCTIONS. PRIMER AND PAINT SHALL BE APPLIED IN ACCORDANCE WITH THE PRIMER AND PAINT MANUFACTURERS WRITTEN INSTALLATION INSTRUCTIONS. ALL SURFACES NOT INTENDED TO RECEIVE PRIMER OR PAINT SHALL BE CLEANED OF ALL PRIMER AND PAINT DRIPPINGS, OVER PAINT OR OVER SPRAY.
- GAS COORDINATION NOTE: THE PLUMBING CONTRACTOR SHALL BE RESPONSIBLE FOR COORDINATING WITH THE NATURAL GAS UTILITY COMPANY FOR THE SHUTTING DOWN OF THE EXISTING GAS SERVICE TO THE TENANT IN ORDER TO ACCOMMODATE THE NEW CONNECTION OF THE NEW GAS FIRED GENERATOR. THE PLUMBING CONTRACTOR SHALL BE RESPONSIBLE FOR OBTAINING ALL OF THE EXISTING GAS LOADS FOR THIS TENANT SPACE AS WELL AS ALL NEW GAS LOADS THAT WILL BE CONNECTED TO THE EXISTING TENANT GAS METER. THE PLUMBING CONTRACTOR SHALL BE RESPONSIBLE FOR COORDINATING THE EXISTING AND NEW GAS LOADS AND REQUIRED GAS PRESSURES WITH THE GAS UTILITY COMPANY TO ENSURE THAT THE EXISTING GAS METER WILL ACCOMMODATE THE GAS DEMAND FOR THIS TENANT. NO WORK SHALL BEGIN AT THE SITE WITHOUT THE PLUMBING CONTRACTOR PERFORMING THIS COORDINATION WORK WITH THE GAS UTILITY COMPANY.



- THE EXISTING CONDITIONS SHOWN ARE APPROXIMATE ONLY AND ARE NOT INTENDED TO INDICATE THE EXACT EXISTING CONDITIONS AT THE SITE OR FOR ALL BUILDINGS. THE PLUMBING CONTRACTOR SHALL FIELD SURVEY ALL EXISTING CONDITIONS AND SHALL DETERMINE THE EXACT SCOPE OF WORK IN THE FIELD. MAKE ADJUSTMENTS TO THE WORK SHOWN ON THE DETAIL AS REQUIRED.
- EACH SHUT OFF VALVE ASSOCIATED WITH THE EMERGENCY GENERATOR SHALL BE LABELED TO READ: "WARNING: GAS USED FOR LIFE SAFETY. AVOID SHUTTING OFF GAS UNLESS NECESSARY". ALL VALVE LABELS SHALL BE PERMANENTLY AFFIXED.
- ALL GAS PIPE, FITTINGS AND VALVES EXPOSED TO OUTDOORS SHALL BE PAINTED WITH ONE COAT OF CORROSION RESISTANT METAL PIPE PRIMER AND ONE FINAL COAT OF CORROSION RESISTANT FINAL PAINT. PAINT COLOR SHALL BE GRAY. ALL SURFACES SHALL BE CLEANED AND PREPARED IN ACCORDANCE WITH THE PRIMER AND PAINT MANUFACTURERS WRITTEN INSTALLATION INSTRUCTIONS. PRIMER AND PAINT SHALL BE APPLIED IN ACCORDANCE WITH THE PRIMER AND PAINT MANUFACTURERS WRITTEN INSTALLATION INSTRUCTIONS. ALL SURFACES NOT INTENDED TO RECEIVE PRIMER OR PAINT SHALL BE CLEANED OF ALL PRIMER AND PAINT DRIPPING, OVERPAINT OR OVERSPRAY AND TO THE SATISFACTION OF THE OWNER.

1 TYPICAL EXISTING GAS METER SCOPE OF WORK
NOT TO SCALE

Seal:



Client:

TOWN OF MANCHESTER-BY-THE-SEA
 10 CENTRAL ST
 MANCHESTER-BY-THE-SEA, MA 01944

Submission:

BID DOCS 10/4/24
 ADDENDUM #2 - Dwg Revs 10/30/24

Revision:

Project:

PUBLIC LIBRARY GENERATOR PROJECT
 15 UNION ST
 MANCHESTER-BY-THE-SEA, MA 01944

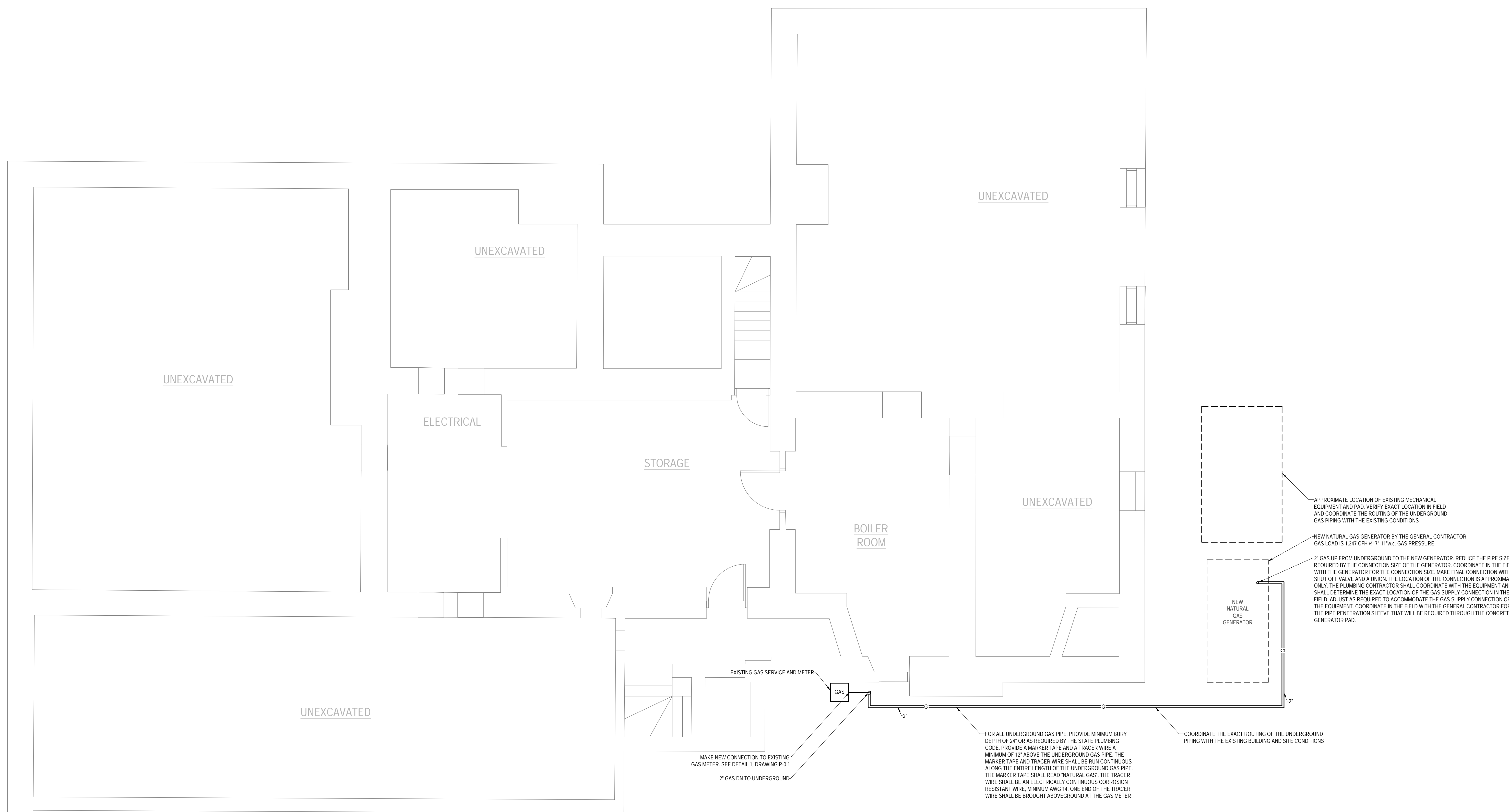
THIS MATERIAL IS CONFIDENTIAL AND MAY NOT BE DISCLOSED WITHOUT PRIOR WRITTEN AUTHORIZATION FROM BLW ENGINEERS INC. COPYRIGHT BLW ENGINEERS INC.

Project No.: 24069
 Drawn By: DC
 Checked By: CM
 Scale: As Noted

Title:
PLUMBING LEGEND, SPECIFICATION, AND DETAILS

Drawing No.:

P-0.1



1 Basement Floor Plan
SCALE: 1/4"=1'-0"

Seal:



BLW Engineers, Inc.
311 Great Road, Post Office Box 1551
Littleton, Massachusetts 01460
T: 978.486.4301 F: 978.428.0067
www.blwengineers.com
HAC "Electrical" Plumbing "Fire Protection"

Client:

TOWN OF
MANCHESTER-BY-THE-SEA
10 CENTRAL ST
MANCHESTER-BY-THE-SEA, MA 01944

Submission:

BID DOCS 10/4/24

ADDENDUM #2 - Dwg Revs 10/30/24

Revision:

Project:

PUBLIC LIBRARY
GENERATOR PROJECT
15 UNION ST
MANCHESTER-BY-THE-SEA, MA 01944

THIS MATERIAL IS CONFIDENTIAL AND MAY NOT BE DISCLOSED WITHOUT PRIOR WRITTEN AUTHORIZATION FROM BLW ENGINEERS INC. COPYRIGHT BLW ENGINEERS INC.

Project No.: 24069

Drawn By: DC

Checked By: CM

Scale: As Noted

Title:

PLUMBING
FLOOR PLAN

Drawing No.:

P-1.0