

Sidewalk Inventory

DRAFT REPORT



Town of Manchester BTS, Massachusetts

Date: January 24, 2019

Date of Inspections: Fall 2018



Town of Manchester BTS, Massachusetts



Sidewalk Inventory

Table of Contents

1. Sidewalk Inventory Summary of Findings

2. Sidewalk Inventory Reports

- Sidewalk Condition Rankings and Unit Costs By – Material Type
- Sidewalk Backlog and Condition Summary By – Material Type
- Sidewalk Condition and Estimated Replacement Costs
 - Asphalt (Replace with Asphalt)
 - Concrete (Replace with Concrete)

3. Sidewalk Point Issue Inventory Reports

- Sidewalk Point Issue Type Summary
- Sidewalk Point Issue Totals By Street
- Sidewalk Point Issue and Segment Description

Maps:

- Sidewalk Inventory Map – East
- Sidewalk Inventory Map – West

Sidewalk Inventory

Summary of Findings

Date: January 24, 2019

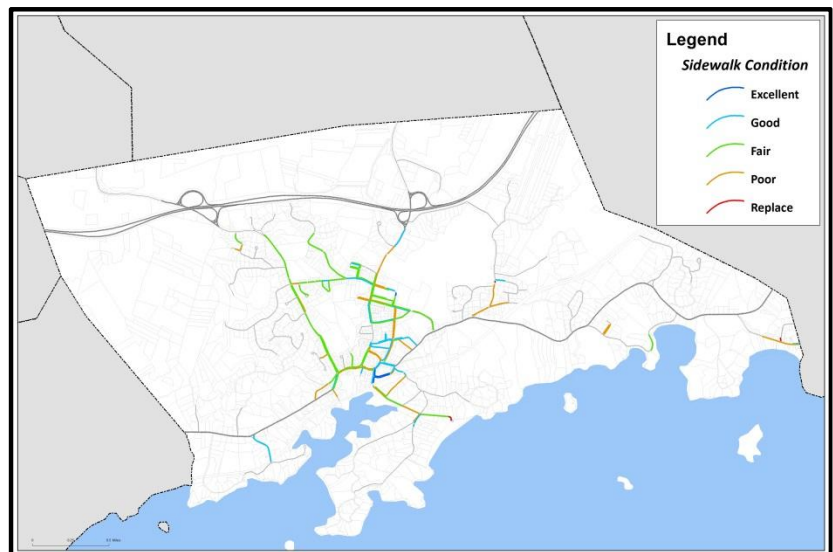
Date of Inspections: Fall 2018

Introduction

Background

The Town of Manchester (BTS) retained BETA Group, Inc. (BETA) to provide GIS services to develop an inventory and assessment of sidewalk conditions along Town Accepted roadways. This comprehensive study was undertaken with the goal of establishing an extensive database of sidewalk surface conditions and inventory in order to produce a prioritized list of improvements. The program is a planning tool intended to provide the foundation to manage the Town's asset resources by combining professional engineering metrics with local institutional knowledge. These efforts will result in the creation of a dynamic Capital Improvement Plan for the Town's overall sidewalk network.

BETA and Town Staff will work together to identify goals with regard to existing conditions. Based on these discussions, It is clear that the Town is committed in maintaining and improving its compliance status. This could only be achieved by preserving and maintaining the existing infrastructure to the greatest extent possible.



Asset Management Approach

An inventory was developed by inspecting each sidewalk segment located within the accepted street right-of-ways. These assets were collected and observed to provide the Town with areas that may have accessibility problems due to the assets condition or compliance standards. This allows Town personnel to perform timely maintenance to improve condition, eliminate hazards and increase overall accessibility. Understanding this concept allows opportune decisions that yield the most cost-effective results.



Sidewalk – Survey Results

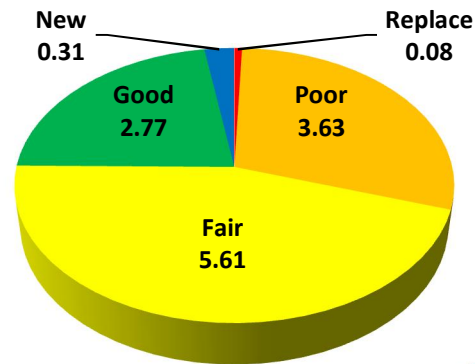
The inventory consisted of inventorying and assessing sidewalks within the right-of-ways of Town accepted roadways. Field work was conducted in the Fall of 2018. A total of **12.39 miles** of sidewalk were inspected by BETA's field team. The collection effort focused on the primary categories of location, general condition, material, distresses and obstructions.

BETA's field inspection team conducted all inspections. The sidewalk inventory was accomplished by walking each segment and making visual observations of the different types of distresses for each segment. Each distress and obstruction was noted using our GIS-based Data Collection Tool through point and attribute data.

Sidewalks

Most of the 12.39 miles of sidewalk were found to be made of Asphalt (11.83 miles). Sidewalks were rated by overall condition (Good, Fair, Poor) to determine suggested repair for each sidewalk segment. Based on the results of the survey, the overall backlog of work for the Town's sidewalk network is estimated at \$1.27 mil.

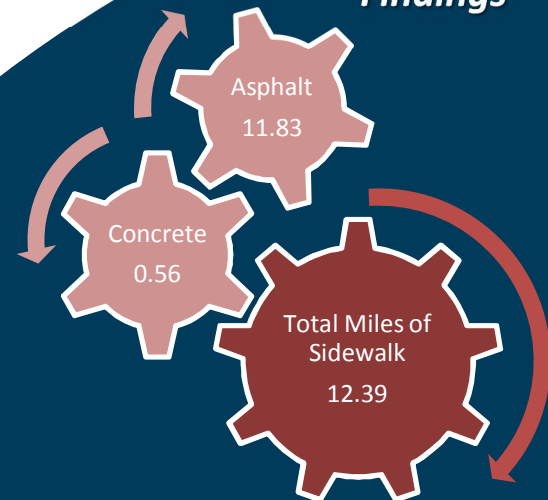
MILES OF SIDEWALK BY CONDITION



Sidewalk Distress Points

Of the 12.39 miles of sidewalk inventoried, 1,556 distress points were found. Each distress was located using GIS and a repair type was assigned. Repair types include maintenance, obstruction, and structural. Overall, maintenance issues were found to be least common (8) while obstructions were slightly higher (13). Most common distresses were structurally related (1,535) which account for issues such as cracking, depressions, and tree roots. Though severity varies among distress types, typically structural issues are more severe and require expedited attention.

Summary of Findings





Sidewalk Condition Descriptions

Good

- No distresses identified up to minor surface blemishes and deterioration observed on sidewalk.
- Less than 10% of the sidewalk section requires minor repairs.

Fair

- Distresses (such as cracking, grass, depressions & bumps, patches and tree root heaves) are starting to develop in a section of sidewalk.
- Between 10% and 25% of the sidewalk section needs repairs.

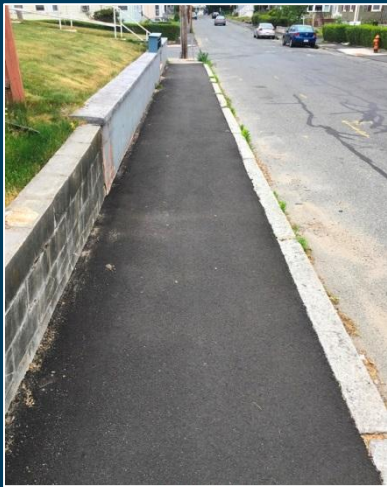
Poor

- Distresses are actively found in a section of sidewalk which may require resurfacing.
- Between 25% and 50% of the sidewalk section needs major repairs or resurfacing.

Replace

- Distresses have caused a loss of sidewalk surface beyond repair and new base material and/or curb may be necessary.
- Complete reconstruction of sidewalk is needed.

Representative Photos



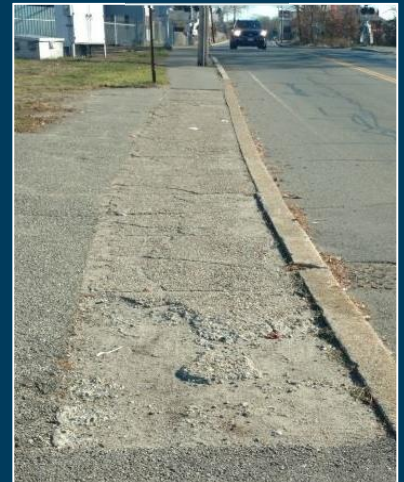
GOOD



FAIR



POOR





Sidewalk Point Issue Descriptions

Maintenance

Areas that only require minor attention such as:

- Bushes
- Overhang Trees
- Grass
- Sand



Structural

Areas where repairs must be performed such as:

- Tree Roots
- Poor Patches
- Cracking
- Spalling
- Panel Lifting



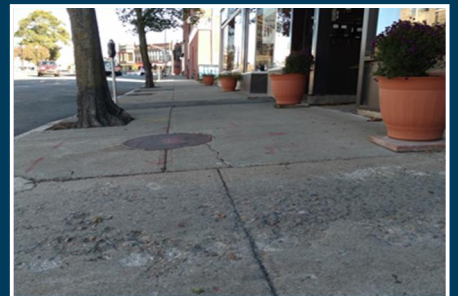
Obstructions

Areas where minimal width is not met due to an object such as:

- Utility Poles
- Hydrants
- Mailboxes
- Signs



Representative Photographs



Manchester (BTS), Massachusetts

Sidewalk Condition Rankings and Unit Costs By - Material Type

Condition	Repair	Repair Cost (\$/S.Y.)
Asphalt Replace With: Asphalt		
Replace	Reconstruction	\$60.00
Poor	Reconstruction	\$60.00
Fair	Spot Repairs - Major	\$30.00
Good	Spot Repairs - Minor	\$15.00
New	No Maintenance Required	\$0.00
Brick Replace With: Brick		
Replace	Reconstruction	\$165.00
Poor	Reconstruction	\$165.00
Fair	Spot Repairs - Major	\$80.00
Good	Spot Repairs - Minor	\$40.00
New	No Maintenance Required	\$0.00
Concrete Replace With: Concrete		
Replace	Reconstruction	\$120.00
Poor	Reconstruction	\$120.00
Fair	Spot Repairs - Major	\$60.00
Good	Spot Repairs - Minor	\$30.00
New	No Maintenance Required	\$0.00
Mix Materials Replace With: Concrete		
Replace	Reconstruction	\$115.00
Poor	Reconstruction	\$115.00
Fair	Spot Repairs - Major	\$115.00
Good	Spot Repairs - Minor	\$30.00
New	No Maintenance Required	\$0.00

**Sidewalk Unit Costs include Unclassified Excavation, Gravel Borrow, Fine Grade Compaction, and New Material (Concrete/HMA)*

***Unit Costs do not include Curbing Improvements*

Manchester (BTS), Massachusetts

Sidewalk Backlog and Condition Summary By - Material Type

Condition	Repair Type	Length (Miles)	Repair Cost
Asphalt	Replace With: Asphalt		
Replace	Reconstruction	0.04	\$4,776.03
Poor	Reconstruction	3.63	\$610,983.62
Fair	Spot Repairs - Major	5.59	\$501,013.43
Good	Spot Repairs - Minor	2.58	\$110,471.49
		11.83	\$1,227,244.57
Concrete	Replace With: Concrete		
Replace	Reconstruction	0.04	\$16,073.71
Fair	Spot Repairs - Major	0.02	\$3,490.46
Good	Spot Repairs - Minor	0.19	\$23,688.53
New	No Maintenance Required	0.31	\$0.00
		0.56	\$43,252.70
Total		12.39	\$1,270,497.27

**Sidewalk Unit Costs include Unclassified Excavation, Gravel Borrow, Fine Grade Compaction, and New Material (Concrete/HMA)*

***Unit Costs do not include Curbing Improvements*

Manchester (BTS), Massachusetts

*Sidewalk Unit Costs include Unclassified Excavation, Gravel Borrow, Fine Grade Compaction, and New Material (Concrete/HMA)

Sidewalk Condition and Estimated Replacement Costs - Asphalt (Replace With Asphalt)

**Unit Costs do not include Curbing Improvements

	Location	GS	GS Width	Curb Type	Condition	Repair	Width	Length	Repair Cost
ALLEN AVENUE									
ALLEN AVE	Even	No	0	Granite	Poor	Reconstruction	4	592.53	\$15,800.72
							Length:	592.53	\$15,800.72
ANCIENT COUNTY WAY									
ANCIENT COUNTY WY-01	Even	No	0	Asphalt	Poor	Reconstruction	5	643.65	\$21,454.97
							Length:	643.65	\$21,454.97
ARBELLA STREET									
ARBELLA ST-01	Odd	Yes	3	None	Fair	Spot Repairs - Major	5	176.35	\$2,939.15
ARBELLA ST-02	Odd	Yes	3	None	Fair	Spot Repairs - Major	5	136.03	\$2,267.17
ARBELLA ST-01	Even	No	0	CC Berm	Fair	Spot Repairs - Major	5	157.39	\$2,623.14
							Length:	469.77	\$7,829.47
ASHLAND AVENUE									
ASHLAND AVE-02	Even	No	0	Granite	Poor	Reconstruction	5	285.18	\$9,505.88
							Length:	285.18	\$9,505.88
BEACH STREET									
BEACH ST-03	Odd	Yes	3	Granite	Poor	Reconstruction	5	338.54	\$11,284.55
BEACH ST-04	Odd	Yes	3	Granite	Poor	Reconstruction	5	246.87	\$8,228.96
BEACH ST-05	Odd	Yes	3	Granite	Fair	Spot Repairs - Major	5	641.62	\$10,693.70
BEACH ST-06	Odd	Yes	3	Granite	Poor	Reconstruction	5	654.97	\$21,832.21
BEACH ST-07	Odd	Yes	2	Granite	Fair	Spot Repairs - Major	6	972.95	\$19,458.98
BEACH ST-03	Even	Yes	3	Granite	Fair	Spot Repairs - Major	5	264.28	\$4,404.60
BEACH ST-04	Even	Yes	3	Granite	Fair	Spot Repairs - Major	5	228.72	\$3,812.03
							Length:	3,347.94	\$79,715.02
BENNETT STREET									
BENNETT ST-01	Even	No	0	Granite	Poor	Reconstruction	5	660.06	\$22,001.91
BENNETT ST-02	Even	No	0	None	Poor	Reconstruction	5	93.76	\$3,125.48
BENNETT ST-03	Even	No	0	Granite	Fair	Spot Repairs - Major	5	441.04	\$7,350.74
							Length:	1,194.87	\$32,478.14
BRIDGE STREET									
BRIDGE ST	Even	No	0	Granite	Fair	Spot Repairs - Major	6	593.49	\$11,869.85
							Length:	593.49	\$11,869.85
BROOK STREET									
BROOK ST-01	Odd	No	0	Granite	Good	Spot Repairs - Minor	4	498.83	\$3,325.53
BROOK ST-02	Odd	No	0	Granite	Good	Spot Repairs - Minor	5	229.67	\$1,913.93

BETA Group, Inc.

	Location	GS	GS Width	Curb Type	Condition	Repair	Width	Length	Repair Cost
BROOK ST-03	Odd	No	0	Granite	Fair	Spot Repairs - Major	6	171.45	\$3,429.01
BROOK ST-04	Odd	Yes	3	None	Good	Spot Repairs - Minor	4	703.57	\$4,690.44
BROOK ST-01	Even	No	0	Granite	Good	Spot Repairs - Minor	4	243.26	\$1,621.73
BROOK ST-02	Even	No	0	Granite	Good	Spot Repairs - Minor	5	219.14	\$1,826.13
BROOK ST-03	Even	No	0	None	Good	Spot Repairs - Minor	5	159.93	\$1,332.79
BROOK ST-04	Even	No	0	None	Good	Spot Repairs - Minor	5	119.04	\$991.97
							Length:	2,344.88	\$19,131.53
BUTLER AVENUE									
BUTLER AVE	Even	No	0	Granite	Replace	Reconstruction	4	126.29	\$3,367.66
							Length:	126.29	\$3,367.66
CENTRAL STREET									
CENTRAL ST-01	Odd	No	0	Granite	Fair	Spot Repairs - Major	5	214.84	\$3,580.63
CENTRAL ST-02	Odd	No	0	Granite	Poor	Reconstruction	5	217.04	\$7,234.78
CENTRAL ST-03	Odd	No	0	Granite	Fair	Spot Repairs - Major	5	305.65	\$5,094.23
CENTRAL ST-01	Even	No	0	Granite	Poor	Reconstruction	5	266.97	\$8,898.87
CENTRAL ST-02	Even	No	0	Granite	Fair	Spot Repairs - Major	5	241.30	\$4,021.64
CENTRAL ST-03	Even	No	0	Granite	Poor	Reconstruction	5	368.73	\$12,290.89
							Length:	1,614.53	\$41,121.04
CHURCH STREET									
CHURCH ST	Even	No	0	Granite	Good	Spot Repairs - Minor	5	212.43	\$1,770.29
							Length:	212.43	\$1,770.29
DEERHILL ROAD									
DEERHILL RD	Odd	Yes	3	Asphalt	Poor	Reconstruction	5	311.86	\$10,395.48
							Length:	311.86	\$10,395.48
DESMOND AVENUE									
DESMOND AVE	Even	No	0	Granite	Good	Spot Repairs - Minor	5	657.39	\$5,478.28
							Length:	657.39	\$5,478.28
ELM STREET									
ELM ST	Odd	No	0	Asphalt	Fair	Spot Repairs - Major	5	489.80	\$8,163.35
							Length:	489.80	\$8,163.35
FOREST STREET									
FOREST ST-03	Odd	Yes	2	Asphalt	Poor	Reconstruction	5	780.91	\$26,030.19
FOREST ST-04	Odd	No	0	Asphalt	Replace	Reconstruction	3	70.42	\$1,408.37
FOREST ST-02	Even	No	0	Asphalt	Poor	Reconstruction	6	622.06	\$24,882.46
							Length:	1,473.39	\$52,321.01
GREENBRIER ROAD									
GREENBRIER RD	Even	Yes	3	Asphalt	Fair	Spot Repairs - Major	5	540.28	\$9,004.60

Location	GS	GS Width	Curb Type	Condition	Repair	Width	Length	Repair Cost	
						Length:	540.28	\$9,004.60	
HARBOR STREET									
HARBOR ST-01	Even	No	0	Granite	Good	Spot Repairs - Minor	5	507.10	\$4,225.80
HARBOR ST-02	Even	No	0	Granite	Good	Spot Repairs - Minor	5	712.96	\$5,941.37
						Length:	1,220.06	\$10,167.17	
KNIGHT ROAD									
KNIGHT RD-01	Odd	No	0	Asphalt	Fair	Spot Repairs - Major	5	293.52	\$4,892.02
KNIGHT RD-01	Even	No	0	Asphalt	Fair	Spot Repairs - Major	5	309.79	\$5,163.10
						Length:	603.31	\$10,055.12	
LEDGEWOOD ROAD									
LEDGEWOOD RD-01	Even	No	0	CC Berm	Good	Spot Repairs - Minor	4	325.10	\$2,167.32
						Length:	325.10	\$2,167.32	
LINCOLN AVENUE									
LINCOLN AVE	Odd	Yes	3	None	Poor	Reconstruction	4	414.35	\$11,049.46
LINCOLN AVE	Even	Yes	4	None	Poor	Reconstruction	5	419.81	\$13,993.60
						Length:	834.16	\$25,043.06	
LINCOLN STREET									
LINCOLN ST-01	Odd	Yes	3	Asphalt	Fair	Spot Repairs - Major	4	500.13	\$6,668.46
LINCOLN ST-02	Odd	Yes	3	Asphalt	Fair	Spot Repairs - Major	4	250.29	\$3,337.20
LINCOLN ST-03	Odd	Yes	4	None	Good	Spot Repairs - Minor	5	91.06	\$758.86
LINCOLN ST-04	Odd	Yes	4	None	Good	Spot Repairs - Minor	5	466.81	\$3,890.12
LINCOLN ST-01	Even	Yes	4	Asphalt	Poor	Reconstruction	4	515.46	\$13,745.51
LINCOLN ST-02	Even	Yes	4	Asphalt	Fair	Spot Repairs - Major	4	246.08	\$3,281.11
LINCOLN ST-04	Even	Yes	5	Mix	Fair	Spot Repairs - Major	5	617.67	\$10,294.55
LINCOLN ST-05	Even	Yes	3	Asphalt	Fair	Spot Repairs - Major	5	1,084.60	\$18,076.63
						Length:	3,772.11	\$60,052.44	
MASCONOMO STREET									
MASCONOMO ST-02	Odd	No	0	Granite	Poor	Reconstruction	5	341.01	\$11,366.93
MASCONOMO ST-02	Even	Yes	3	Granite	Good	Spot Repairs - Minor	4	375.17	\$2,501.12
MASCONOMO ST-03	Even	Yes	3	Granite	Good	Spot Repairs - Minor	4	92.78	\$618.56
						Length:	808.96	\$14,486.61	
NORTH STREET									
NORTH ST	Odd	No	0	Granite	Poor	Reconstruction	5	575.96	\$19,198.55
NORTH ST	Even	No	0	Granite	Poor	Reconstruction	4	585.63	\$15,616.75
						Length:	1,161.58	\$34,815.30	
NORWOOD AVENUE									
NORWOOD AVE-01	Odd	Yes	3	Granite	Poor	Reconstruction	4	394.25	\$10,513.41
NORWOOD AVE-03	Odd	Yes	4	Granite	Poor	Reconstruction	4	644.16	\$17,177.47

BETA Group, Inc.

	Location	GS	GS Width	Curb Type	Condition	Repair	Width	Length	Repair Cost
NORWOOD AVE-04	Odd	No	0	Granite	Poor	Reconstruction	5	308.86	\$10,295.40
NORWOOD AVE-05	Odd	No	0	Granite	Poor	Reconstruction	5	390.27	\$13,009.06
NORWOOD AVE-05	Odd	Yes	2	Granite	Fair	Spot Repairs - Major	5	141.21	\$2,353.47
NORWOOD AVE-01	Even	Yes	2	Granite	Poor	Reconstruction	5	407.11	\$13,570.27
NORWOOD AVE-03	Even	Yes	3	Mix	Poor	Reconstruction	5	665.78	\$22,192.66
NORWOOD AVE-04	Even	Yes	2	Granite	Good	Spot Repairs - Minor	4	293.34	\$1,955.62
NORWOOD AVE-05	Even	No	0	Granite	Good	Spot Repairs - Minor	5	476.20	\$3,968.33
							Length:	3,721.18	\$95,035.70
OCEAN STREET									
OCEAN ST-01	Even	No	0	Asphalt	Fair	Spot Repairs - Major	6	581.62	\$11,632.50
							Length:	581.62	\$11,632.50
OLD ESSEX ROAD									
OLD ESSEX RD-01	Odd	No	0	Asphalt	Fair	Spot Repairs - Major	5	1,255.71	\$20,928.50
OLD ESSEX RD-02	Odd	No	0	Asphalt	Fair	Spot Repairs - Major	5	982.44	\$16,374.00
							Length:	2,238.15	\$37,302.50
PINE STREET									
PINE ST-05	Odd	No	0	Granite	Fair	Spot Repairs - Major	4	1,387.82	\$18,504.26
PINE ST-06	Odd	No	0	Granite	Fair	Spot Repairs - Major	4	375.44	\$5,005.86
PINE ST-07	Odd	No	0	Granite	Fair	Spot Repairs - Major	4	198.48	\$2,646.38
PINE ST-08	Odd	Yes	4	Asphalt	Fair	Spot Repairs - Major	5	460.65	\$7,677.46
PINE ST-09	Odd	Yes	4	Asphalt	Poor	Reconstruction	5	569.45	\$18,981.57
PINE ST-11	Odd	Yes	3	Asphalt	Fair	Spot Repairs - Major	5	761.18	\$12,686.26
PINE ST-12	Odd	Yes	2	Asphalt	Fair	Spot Repairs - Major	5	701.34	\$11,688.96
PINE ST-08	Even	Yes	3	Asphalt	Fair	Spot Repairs - Major	5	444.45	\$7,407.55
PINE ST-09	Even	Yes	3	Asphalt	Fair	Spot Repairs - Major	5	578.84	\$9,647.26
PINE ST-10	Even	Yes	2	Asphalt	Fair	Spot Repairs - Major	5	920.67	\$15,344.46
PINE ST-11	Even	Yes	2	Asphalt	Fair	Spot Repairs - Major	5	646.07	\$10,767.85
PINE ST-12	Even	Yes	3	Asphalt	Fair	Spot Repairs - Major	6	673.74	\$13,474.87
							Length:	7,718.12	\$133,832.74
PINEWOOD ROAD									
PINEWOOD RD	Even	No	0	None	Poor	Reconstruction	4	182.51	\$4,866.99
							Length:	182.51	\$4,866.99
PLEASANT STREET									
PLEASANT ST-01	Odd	Yes	2	Granite	Poor	Reconstruction	5	262.81	\$8,760.46
PLEASANT ST-02	Odd	No	0	Granite	Fair	Spot Repairs - Major	5	275.72	\$4,595.35
PLEASANT ST-03	Odd	No	0	Granite	Fair	Spot Repairs - Major	5	227.39	\$3,789.76
PLEASANT ST-04	Odd	No	0	Granite	Fair	Spot Repairs - Major	5	232.35	\$3,872.42
PLEASANT ST-05	Odd	No	0	None	Good	Spot Repairs - Minor	5	245.54	\$2,046.13
PLEASANT ST-06	Odd	No	0	Granite	Fair	Spot Repairs - Major	5	511.88	\$8,531.28

BETA Group, Inc.

	Location	GS	GS Width	Curb Type	Condition	Repair	Width	Length	Repair Cost
PLEASANT ST-07	Odd	No	0	Granite	Good	Spot Repairs - Minor	5	350.31	\$2,919.25
PLEASANT ST-08	Odd	Yes	6	Granite	Fair	Spot Repairs - Major	5	602.54	\$10,042.27
PLEASANT ST-09	Odd	Yes	5	CC Berm	Poor	Reconstruction	4	380.21	\$10,139.04
PLEASANT ST-10	Odd	No	0	CC Berm	Good	Spot Repairs - Minor	5	322.29	\$2,685.75
PLEASANT ST-08	Even	No	0	Granite	Good	Spot Repairs - Minor	6	622.87	\$6,228.70
PLEASANT ST-10	Even	Yes	2	Asphalt	Poor	Reconstruction	5	392.89	\$13,096.30
PLEASANT ST-10	Even	Yes	2	Asphalt	Fair	Spot Repairs - Major	5	143.80	\$2,396.58
							Length:	4,570.58	\$79,103.28
PULASKI DRIVE									
PULASKI DRIVE	Even	No	0	Asphalt	Fair	Spot Repairs - Major	4	801.53	\$10,687.02
							Length:	801.53	\$10,687.02
PUTNAM COURT									
PUTNAM COURT	Odd	No	0	Granite	Good	Spot Repairs - Minor	4	198.16	\$1,321.04
PUTNAM COURT	Even	No	0	Granite	Good	Spot Repairs - Minor	4	228.01	\$1,520.06
							Length:	426.16	\$2,841.10
RAYMOND STREET									
RAYMOND ST-01	Odd	Yes	4	Mix	Poor	Reconstruction	5	682.22	\$22,740.53
RAYMOND ST-02	Odd	Yes	4	Mix	Poor	Reconstruction	5	326.03	\$10,867.81
RAYMOND ST-03	Odd	Yes	4	Mix	Poor	Reconstruction	5	297.96	\$9,931.95
RAYMOND ST-03	Even	No	0	Granite	Good	Spot Repairs - Minor	6	234.36	\$2,343.58
							Length:	1,540.57	\$45,883.87
ROCKWOOD HEIGHTS ROAD									
ROCKWOOD HEIGHTS RD-01	Odd	No	0	Asphalt	Fair	Spot Repairs - Major	4	430.89	\$5,745.17
ROCKWOOD HEIGHTS RD-02	Odd	No	0	Asphalt	Poor	Reconstruction	4	185.75	\$4,953.21
							Length:	616.63	\$10,698.38
ROSEDALE AVENUE									
ROSEDALE AVE	Odd	No	0	None	Fair	Spot Repairs - Major	7	759.90	\$17,731.02
ROSEDALE AVE	Even	No	0	None	Fair	Spot Repairs - Major	7	498.65	\$11,635.15
							Length:	1,258.55	\$29,366.17
SCHOOL STREET									
SCHOOL ST-05	Odd	Yes	2	None	Good	Spot Repairs - Minor	5	725.86	\$6,048.80
SCHOOL ST-06	Odd	No	0	Asphalt	Poor	Reconstruction	6	340.31	\$13,612.38
SCHOOL ST-07	Odd	No	0	Asphalt	Poor	Reconstruction	5	724.42	\$24,147.40
SCHOOL ST-08	Odd	Yes	4	None	Poor	Reconstruction	5	376.33	\$12,544.20
SCHOOL ST-10	Odd	Yes	2	None	Fair	Spot Repairs - Major	5	335.63	\$5,593.83
SCHOOL ST-11	Odd	Yes	2	None	Fair	Spot Repairs - Major	5	150.96	\$2,515.95
SCHOOL ST-12	Odd	Yes	2	Asphalt	Fair	Spot Repairs - Major	5	140.89	\$2,348.09
SCHOOL ST-13	Odd	Yes	2	Asphalt	Fair	Spot Repairs - Major	5	191.97	\$3,199.54
SCHOOL ST-14	Odd	Yes	4	Asphalt	Fair	Spot Repairs - Major	5	425.84	\$7,097.29

BETA Group, Inc.

	Location	GS	GS Width	Curb Type	Condition	Repair	Width	Length	Repair Cost
SCHOOL ST-18	Odd	No	0	None	Good	Spot Repairs - Minor	5	100.82	\$840.20
SCHOOL ST-19	Odd	No	0	Granite	Poor	Reconstruction	5	124.62	\$4,154.00
SCHOOL ST-20	Odd	No	0	Granite	Fair	Spot Repairs - Major	5	549.44	\$9,157.38
SCHOOL ST-08	Even	No	0	Asphalt	Fair	Spot Repairs - Major	5	373.20	\$6,219.94
SCHOOL ST-10	Even	No	0	Granite	Fair	Spot Repairs - Major	7	355.06	\$8,284.74
SCHOOL ST-11	Even	No	0	Granite	Poor	Reconstruction	5	180.04	\$6,001.36
SCHOOL ST-12	Even	No	0	None	Good	Spot Repairs - Minor	6	123.29	\$1,232.94
SCHOOL ST-13	Even	No	0	None	Good	Spot Repairs - Minor	6	206.41	\$2,064.06
SCHOOL ST-14	Even	No	0	None	Good	Spot Repairs - Minor	6	437.85	\$4,378.50
SCHOOL ST-18	Even	No	0	None	Good	Spot Repairs - Minor	5	137.95	\$1,149.57
SCHOOL ST-19	Even	No	0	Granite	Fair	Spot Repairs - Major	5	147.21	\$2,453.47
SCHOOL ST-20	Even	No	0	Granite	Fair	Spot Repairs - Major	5	579.15	\$9,652.54
							Length:	6,727.24	\$132,696.15
SEA STREET									
SEA ST-01	Odd	No	0	Granite	Good	Spot Repairs - Minor	5	304.56	\$2,538.03
SEA ST-02	Odd	No	0	Granite	Good	Spot Repairs - Minor	5	123.65	\$1,030.39
							Length:	428.21	\$3,568.42
SUMMER STREET									
SUMMER ST	Odd	No	0	Granite	Poor	Reconstruction	5	271.12	\$9,037.32
SUMMER ST	Even	No	0	Granite	Good	Spot Repairs - Minor	5	269.62	\$2,246.86
							Length:	540.74	\$11,284.18
TAPPAN STREET									
TAPPAN ST	Even	No	0	None	Poor	Reconstruction	5	870.40	\$29,013.31
							Length:	870.40	\$29,013.31
UNION STREET									
UNION ST-01	Odd	No	0	Granite	Fair	Spot Repairs - Major	7	125.76	\$2,934.31
UNION ST-02	Odd	No	0	Granite	Fair	Spot Repairs - Major	7	222.62	\$5,194.46
UNION ST-03	Odd	No	0	Granite	Good	Spot Repairs - Minor	6	303.25	\$3,032.55
UNION ST-01	Even	No	0	Granite	Poor	Reconstruction	5	191.70	\$6,390.12
UNION ST-02	Even	No	0	Granite	Poor	Reconstruction	5	241.71	\$8,057.04
UNION ST-03	Even	No	0	Granite	Good	Spot Repairs - Minor	4	340.35	\$2,269.00
							Length:	1,425.40	\$27,877.48
VICTORIA ROAD									
VICTORIA RD	Odd	No	0	None	Poor	Reconstruction	4	424.52	\$11,320.43
VICTORIA RD	Even	Yes	3	None	Poor	Reconstruction	3	383.59	\$7,671.82
							Length:	808.11	\$18,992.25
VINE STREET									
VINE ST-01	Odd	No	0	Granite	Fair	Spot Repairs - Major	4	412.86	\$5,504.79
VINE ST-02	Odd	No	0	Granite	Fair	Spot Repairs - Major	4	349.06	\$4,654.19

BETA Group, Inc.

	Location	GS	GS Width	Curb Type	Condition	Repair	Width	Length	Repair Cost
VINE ST-01	Even	No	0	None	Good	Spot Repairs - Minor	4	415.72	\$2,771.48
VINE ST-02	Even	No	0	None	Good	Spot Repairs - Minor	4	363.38	\$2,422.56
VINE ST-03	Even	No	0	Granite	Fair	Spot Repairs - Major	5	561.65	\$9,360.79
							Length:	2,102.68	\$24,713.81
WASHINGTON STREET									
WASHINGTON ST-01	Odd	No	0	Granite	Good	Spot Repairs - Minor	6	285.86	\$2,858.65
WASHINGTON ST-02	Odd	No	0	Granite	Good	Spot Repairs - Minor	6	190.29	\$1,902.94
WASHINGTON ST-01	Even	No	0	Granite	Good	Spot Repairs - Minor	4	194.01	\$1,293.43
WASHINGTON ST-02	Even	No	0	Granite	Good	Spot Repairs - Minor	4	196.12	\$1,307.48
							Length:	866.29	\$7,362.49
WILLMONTON ROAD									
WILLMONTON RD-01	Odd	No	0	Asphalt	Fair	Spot Repairs - Major	6	298.22	\$5,964.46
WILLMONTON RD-02	Odd	No	0	Asphalt	Fair	Spot Repairs - Major	6	109.45	\$2,189.05
WILLMONTON RD-01	Even	No	0	Asphalt	Fair	Spot Repairs - Major	5	294.79	\$4,913.12
WILLMONTON RD-02	Even	No	0	Asphalt	Fair	Spot Repairs - Major	5	87.50	\$1,458.35
							Length:	789.96	\$14,524.98
WINDERMERE PARK EXT									
WINDERMERE PARK EXT-01	Odd	No	0	Asphalt	Fair	Spot Repairs - Major	6	336.28	\$6,725.60
WINDERMERE PARK EXT-02	Even	No	0	Asphalt	Good	Spot Repairs - Minor	6	304.14	\$3,041.36
							Length:	640.42	\$9,766.96

Manchester (BTS), Massachusetts

*Sidewalk Unit Costs include Unclassified Excavation, Gravel Borrow,
Fine Grade Compaction, and New Material (Concrete/HMA)

**Unit Costs do not include Curbing Improvements

Sidewalk Condition and Estimated Replacement Costs - Concrete (Replace With Concrete)

	Location	GS	GS Width	Curb Type	Condition	Repair	Width	Length	Repair Cost
ARBELLA STREET									
ARBELLA ST-02	Odd	No	0	Granite	New	Io Maintenance Require	4	117.33	\$0.00
							Length:	117.33	\$0.00
BEACH STREET									
BEACH ST-01	Odd	No	0	Granite	Good	Spot Repairs - Minor	11	208.89	\$7,659.30
BEACH ST-02	Odd	No	0	Granite	Good	Spot Repairs - Minor	8	260.62	\$6,949.86
BEACH ST-07	Odd	No	0	Granite	Replace	Reconstruction	6	200.92	\$16,073.71
BEACH ST-01	Even	No	0	Granite	New	Io Maintenance Require	5	232.22	\$0.00
BEACH ST-02	Even	No	0	Granite	New	Io Maintenance Require	4	193.27	\$0.00
							Length:	1,095.91	\$30,682.87
BRIDGE STREET									
BRIDGE ST	Odd	No	0	Granite	Good	Spot Repairs - Minor	5	544.76	\$9,079.37
							Length:	544.76	\$9,079.37
SUMMER STREET									
SUMMER ST	Odd	No	0	Granite	New	Io Maintenance Require	5	554.23	\$0.00
SUMMER ST	Even	No	0	Granite	New	Io Maintenance Require	5	544.59	\$0.00
							Length:	1,098.82	\$0.00
TAPPAN STREET									
TAPPAN ST	Even	No	0	None	Fair	Spot Repairs - Major	5	104.71	\$3,490.46
							Length:	104.71	\$3,490.46

Manchester (BTS), Massachusetts

Sidewalk Point Issue Type Summary

Maintenance

Bush/Shrub	8
Total:	8

Obstruction

Insufficient Width	9
Utility Pole	3
Utility Vault	1
Total:	13

Structural

Cracking	771
Depression	415
Patch	216
Tree Roots	83
Missing Section/Panel	12
Spalling	10
Defective Panel	9
Sidewalk Cross Slope	8
Cracking W/Grass	6
Lifting	4
Sign	1
Total:	1,535

Manchester (BTS), Massachusetts

Sidewalk Point Issue Totals By Street

Street	Number of Obstructions
ALLEN AVENUE	14
ANCIENT COUNTY WAY	18
ARBELLA STREET	15
ASHLAND AVENUE	15
BEACH STREET	96
BENNETT STREET	40
BRIDGE STREET	19
BROOK STREET	41
CENTRAL STREET	47
DEERHILL ROAD	10
DESMOND AVENUE	31
ELM STREET	6
FOREST STREET	40
GREENBRIER ROAD	9
HARBOR STREET	1
KNIGHT ROAD	16
LEDGEWOOD ROAD	1
LINCOLN AVENUE	25
LINCOLN STREET	67
MASCONOMO STREET	29
NORTH STREET	38
NORWOOD AVENUE	126
OCEAN STREET	8
OLD ESSEX ROAD	50
PINE STREET	174
PINEWOOD ROAD	5
PLEASANT STREET	97
PULASKI DRIVE	13
PUTNAM COURT	1
RAYMOND STREET	22
ROCKWOOD HEIGHTS ROAD	16
ROSEDALE AVENUE	21
SCHOOL STREET	220
SEA STREET	11
SUMMER STREET	11

Street	Number of Obstructions
TAPPAN STREET	43
UNION STREET	37
VICTORIA ROAD	18
VINE STREET	44
WASHINGTON STREET	21
WILLMONTON ROAD	26
WINDERMERE PARK EXT	14
Total:	1,556.00

Manchester (BTS), Massachusetts

Sidewalk Point Issue and Segment Description

	Location	Obstruction	Type
ALLEN AVENUE Total: 14			
ALLEN AVE-E	Even	Patch	Structural
ALLEN AVE-E	Even	Depression	Structural
ALLEN AVE-E	Even	Cracking	Structural
ALLEN AVE-E	Even	Depression	Structural
ALLEN AVE-E	Even	Tree Roots	Structural
ALLEN AVE-E	Even	Cracking	Structural
ALLEN AVE-E	Even	Cracking	Structural
ALLEN AVE-E	Even	Patch	Structural
ALLEN AVE-E	Even	Tree Roots	Structural
ALLEN AVE-E	Even	Depression	Structural
ALLEN AVE-E	Even	Cracking	Structural
ALLEN AVE-E	Even	Insufficient Width	Obstruction
ALLEN AVE-E	Even	Depression	Structural
ALLEN AVE-E	Even	Depression	Structural
ANCIENT COUNTY WAY Total: 18			
ANCIENT COUNTY WY-01-E	Even	Cracking	Structural
ANCIENT COUNTY WY-01-E	Even	Depression	Structural
ANCIENT COUNTY WY-01-E	Even	Cracking	Structural
ANCIENT COUNTY WY-01-E	Even	Cracking	Structural
ANCIENT COUNTY WY-01-E	Even	Depression	Structural
ANCIENT COUNTY WY-01-E	Even	Depression	Structural
ANCIENT COUNTY WY-01-E	Even	Cracking	Structural
ANCIENT COUNTY WY-01-E	Even	Cracking	Structural
ANCIENT COUNTY WY-01-E	Even	Cracking	Structural
ANCIENT COUNTY WY-01-E	Even	Cracking	Structural
ANCIENT COUNTY WY-01-E	Even	Depression	Structural
ANCIENT COUNTY WY-01-E	Even	Cracking	Structural
ANCIENT COUNTY WY-01-E	Even	Cracking	Structural
ANCIENT COUNTY WY-01-E	Even	Depression	Structural
ANCIENT COUNTY WY-01-E	Even	Depression	Structural
ANCIENT COUNTY WY-01-E	Even	Depression	Structural
ANCIENT COUNTY WY-01-E	Even	Cracking	Structural
ANCIENT COUNTY WY-01-E	Even	Cracking	Structural
ARBELLA STREET Total: 15			
ARBELLA ST-01-O	Odd	Cracking	Structural
ARBELLA ST-01-O	Odd	Cracking	Structural
ARBELLA ST-01-O	Odd	Cracking	Structural
ARBELLA ST-01-O	Odd	Cracking	Structural
ARBELLA ST-01-O	Odd	Depression	Structural
ARBELLA ST-01-O	Odd	Cracking W/Grass	Structural
ARBELLA ST-02-O	Odd	Cracking	Structural
ARBELLA ST-02-O	Odd	Cracking	Structural
ARBELLA ST-02-O	Odd	Cracking	Structural
ARBELLA ST-02-O	Odd	Tree Roots	Structural
ARBELLA ST-01-E	Even	Patch	Structural
ARBELLA ST-01-E	Even	Patch	Structural
ARBELLA ST-01-E	Even	Depression	Structural
ARBELLA ST-01-E	Even	Cracking	Structural
ARBELLA ST-01-E	Even	Cracking	Structural
ASHLAND AVENUE Total: 15			
ASHLAND AVE-02-E	Even	Depression	Structural

	Location	Obstruction	Type
ASHLAND AVE-02-E	Even	Depression	Structural
ASHLAND AVE-02-E	Even	Patch	Structural
ASHLAND AVE-02-E	Even	Depression	Structural
ASHLAND AVE-02-E	Even	Cracking	Structural
ASHLAND AVE-02-E	Even	Patch	Structural
ASHLAND AVE-02-E	Even	Patch	Structural
ASHLAND AVE-02-E	Even	Patch	Structural
ASHLAND AVE-02-E	Even	Cracking	Structural
ASHLAND AVE-02-E	Even	Cracking	Structural
ASHLAND AVE-02-E	Even	Depression	Structural
ASHLAND AVE-02-E	Even	Cracking	Structural
ASHLAND AVE-02-E	Even	Cracking	Structural
ASHLAND AVE-02-E	Even	Depression	Structural
ASHLAND AVE-02-E	Even	Patch	Structural
BEACH STREET		Total: 96	
BEACH ST-01-O	Odd	Patch	Structural
BEACH ST-02-O	Odd	Cracking	Structural
BEACH ST-02-O	Odd	Lifting	Structural
BEACH ST-03-O	Odd	Depression	Structural
BEACH ST-03-O	Odd	Cracking	Structural
BEACH ST-03-O	Odd	Patch	Structural
BEACH ST-03-O	Odd	Patch	Structural
BEACH ST-03-O	Odd	Depression	Structural
BEACH ST-03-O	Odd	Depression	Structural
BEACH ST-03-O	Odd	Cracking	Structural
BEACH ST-03-O	Odd	Depression	Structural
BEACH ST-03-O	Odd	Depression	Structural
BEACH ST-03-O	Odd	Cracking	Structural
BEACH ST-03-O	Odd	Cracking	Structural
BEACH ST-03-O	Odd	Cracking	Structural
BEACH ST-04-O	Odd	Tree Roots	Structural
BEACH ST-04-O	Odd	Depression	Structural
BEACH ST-04-O	Odd	Cracking	Structural
BEACH ST-04-O	Odd	Cracking	Structural
BEACH ST-04-O	Odd	Cracking	Structural
BEACH ST-04-O	Odd	Tree Roots	Structural
BEACH ST-04-O	Odd	Depression	Structural
BEACH ST-05-O	Odd	Depression	Structural
BEACH ST-05-O	Odd	Depression	Structural
BEACH ST-05-O	Odd	Depression	Structural
BEACH ST-05-O	Odd	Cracking	Structural
BEACH ST-05-O	Odd	Cracking	Structural
BEACH ST-05-O	Odd	Cracking	Structural
BEACH ST-05-O	Odd	Cracking	Structural
BEACH ST-05-O	Odd	Tree Roots	Structural
BEACH ST-05-O	Odd	Patch	Structural
BEACH ST-06-O	Odd	Cracking	Structural
BEACH ST-06-O	Odd	Depression	Structural
BEACH ST-06-O	Odd	Cracking	Structural
BEACH ST-06-O	Odd	Cracking	Structural
BEACH ST-06-O	Odd	Depression	Structural
BEACH ST-06-O	Odd	Depression	Structural
BEACH ST-06-O	Odd	Depression	Structural
BEACH ST-06-O	Odd	Cracking	Structural
BEACH ST-06-O	Odd	Cracking	Structural
BEACH ST-06-O	Odd	Cracking	Structural
BEACH ST-06-O	Odd	Missing Section/Panel	Structural

	Location	Obstruction	Type
BEACH ST-06-O	Odd	Cracking	Structural
BEACH ST-06-O	Odd	Depression	Structural
BEACH ST-06-O	Odd	Depression	Structural
BEACH ST-06-O	Odd	Cracking	Structural
BEACH ST-06-O	Odd	Cracking	Structural
BEACH ST-06-O	Odd	Depression	Structural
BEACH ST-06-O	Odd	Cracking	Structural
BEACH ST-06-O	Odd	Cracking	Structural
BEACH ST-07-O	Odd	Defective Panel	Structural
BEACH ST-07-O	Odd	Cracking	Structural
BEACH ST-07-O	Odd	Cracking	Structural
BEACH ST-07-O	Odd	Cracking	Structural
BEACH ST-07-O	Odd	Cracking	Structural
BEACH ST-07-O	Odd	Patch	Structural
BEACH ST-07-O	Odd	Tree Roots	Structural
BEACH ST-07-O	Odd	Cracking	Structural
BEACH ST-07-O	Odd	Cracking	Structural
BEACH ST-07-O	Odd	Cracking	Structural
BEACH ST-07-O	Odd	Utility Pole	Obstruction
BEACH ST-07-O	Odd	Cracking	Structural
BEACH ST-07-O	Odd	Cracking	Structural
BEACH ST-07-O	Odd	Cracking	Structural
BEACH ST-07-O	Odd	Defective Panel	Structural
BEACH ST-07-O	Odd	Patch	Structural
BEACH ST-07-O	Odd	Cracking	Structural
BEACH ST-07-O	Odd	Cracking	Structural
BEACH ST-07-O	Odd	Depression	Structural
BEACH ST-07-O	Odd	Sidewalk Cross Slope	Structural
BEACH ST-07-O	Odd	Cracking	Structural
BEACH ST-07-O	Odd	Defective Panel	Structural
BEACH ST-07-O	Odd	Defective Panel	Structural
BEACH ST-07-O	Odd	Defective Panel	Structural
BEACH ST-07-O	Odd	Defective Panel	Structural
BEACH ST-07-O	Odd	Defective Panel	Structural
BEACH ST-07-O	Odd	Cracking	Structural
BEACH ST-07-O	Odd	Cracking	Structural
BEACH ST-07-O	Odd	Cracking	Structural
BEACH ST-07-O	Odd	Cracking	Structural
BEACH ST-07-O	Odd	Defective Panel	Structural
BEACH ST-03-E	Even	Cracking	Structural
BEACH ST-03-E	Even	Cracking	Structural
BEACH ST-03-E	Even	Depression	Structural
BEACH ST-03-E	Even	Cracking	Structural
BEACH ST-03-E	Even	Cracking	Structural
BEACH ST-03-E	Even	Tree Roots	Structural
BEACH ST-03-E	Even	Cracking	Structural
BEACH ST-03-E	Even	Tree Roots	Structural
BEACH ST-04-E	Even	Cracking	Structural
BEACH ST-04-E	Even	Cracking	Structural
BEACH ST-04-E	Even	Cracking	Structural
BEACH ST-04-E	Even	Cracking	Structural
BEACH ST-04-E	Even	Cracking	Structural
BEACH ST-04-E	Even	Patch	Structural
BEACH ST-04-E	Even	Cracking	Structural
BENNETT STREET		Total: 40	
BENNETT ST-01-E	Even	Depression	Structural
BENNETT ST-01-E	Even	Depression	Structural

	Location	Obstruction	Type
BENNETT ST-01-E	Even	Depression	Structural
BENNETT ST-01-E	Even	Cracking	Structural
BENNETT ST-01-E	Even	Depression	Structural
BENNETT ST-01-E	Even	Cracking	Structural
BENNETT ST-01-E	Even	Patch	Structural
BENNETT ST-01-E	Even	Depression	Structural
BENNETT ST-01-E	Even	Depression	Structural
BENNETT ST-01-E	Even	Depression	Structural
BENNETT ST-01-E	Even	Cracking	Structural
BENNETT ST-01-E	Even	Patch	Structural
BENNETT ST-01-E	Even	Cracking	Structural
BENNETT ST-01-E	Even	Patch	Structural
BENNETT ST-01-E	Even	Depression	Structural
BENNETT ST-01-E	Even	Cracking	Structural
BENNETT ST-01-E	Even	Cracking	Structural
BENNETT ST-01-E	Even	Cracking	Structural
BENNETT ST-01-E	Even	Depression	Structural
BENNETT ST-01-E	Even	Tree Roots	Structural
BENNETT ST-01-E	Even	Cracking	Structural
BENNETT ST-01-E	Even	Depression	Structural
BENNETT ST-01-E	Even	Cracking	Structural
BENNETT ST-01-E	Even	Depression	Structural
BENNETT ST-01-E	Even	Cracking	Structural
BENNETT ST-01-E	Even	Cracking	Structural
BENNETT ST-02-E	Even	Depression	Structural
BENNETT ST-02-E	Even	Cracking	Structural
BENNETT ST-02-E	Even	Patch	Structural
BENNETT ST-03-E	Even	Cracking	Structural
BENNETT ST-03-E	Even	Patch	Structural
BENNETT ST-03-E	Even	Depression	Structural
BENNETT ST-03-E	Even	Cracking	Structural
BENNETT ST-03-E	Even	Cracking	Structural
BENNETT ST-03-E	Even	Depression	Structural
BENNETT ST-03-E	Even	Patch	Structural
BENNETT ST-03-E	Even	Patch	Structural
BENNETT ST-03-E	Even	Depression	Structural
BENNETT ST-03-E	Even	Depression	Structural
BENNETT ST-03-E	Even	Depression	Structural
BRIDGE STREET	Total: 19		
BRIDGE ST-O	Odd	Cracking	Structural
BRIDGE ST-O	Odd	Defective Panel	Structural
BRIDGE ST-O	Odd	Depression	Structural
BRIDGE ST-O	Odd	Lifting	Structural
BRIDGE ST-O	Odd	Cracking	Structural
BRIDGE ST-O	Odd	Cracking	Structural
BRIDGE ST-E	Even	Tree Roots	Structural
BRIDGE ST-E	Even	Cracking	Structural
BRIDGE ST-E	Even	Patch	Structural
BRIDGE ST-E	Even	Cracking	Structural
BRIDGE ST-E	Even	Cracking	Structural
BRIDGE ST-E	Even	Tree Roots	Structural
BRIDGE ST-E	Even	Tree Roots	Structural
BRIDGE ST-E	Even	Patch	Structural
BRIDGE ST-E	Even	Patch	Structural
BRIDGE ST-E	Even	Depression	Structural
BRIDGE ST-E	Even	Cracking	Structural
BRIDGE ST-E	Even	Cracking	Structural

Page 5 of 29

	Location	Obstruction	Type
CENTRAL ST-03-O	Odd	Cracking	Structural
CENTRAL ST-03-O	Odd	Cracking	Structural
CENTRAL ST-03-O	Odd	Patch	Structural
CENTRAL ST-03-O	Odd	Patch	Structural
CENTRAL ST-03-O	Odd	Patch	Structural
CENTRAL ST-03-O	Odd	Cracking	Structural
CENTRAL ST-03-O	Odd	Cracking	Structural
CENTRAL ST-03-O	Odd	Cracking	Structural
CENTRAL ST-03-O	Odd	Cracking	Structural
CENTRAL ST-03-O	Odd	Patch	Structural
CENTRAL ST-01-E	Even	Cracking	Structural
CENTRAL ST-01-E	Even	Cracking	Structural
CENTRAL ST-01-E	Even	Cracking	Structural
CENTRAL ST-01-E	Even	Cracking	Structural
CENTRAL ST-01-E	Even	Cracking	Structural
CENTRAL ST-01-E	Even	Cracking	Structural
CENTRAL ST-01-E	Even	Cracking	Structural
CENTRAL ST-01-E	Even	Cracking	Structural
CENTRAL ST-01-E	Even	Cracking	Structural
CENTRAL ST-01-E	Even	Cracking	Structural
CENTRAL ST-01-E	Even	Cracking	Structural
CENTRAL ST-02-E	Even	Cracking	Structural
CENTRAL ST-02-E	Even	Cracking	Structural
CENTRAL ST-02-E	Even	Cracking	Structural
CENTRAL ST-02-E	Even	Cracking	Structural
CENTRAL ST-03-E	Even	Cracking	Structural
CENTRAL ST-03-E	Even	Depression	Structural
CENTRAL ST-03-E	Even	Cracking	Structural
CENTRAL ST-03-E	Even	Patch	Structural
CENTRAL ST-03-E	Even	Cracking	Structural
CENTRAL ST-03-E	Even	Depression	Structural
CENTRAL ST-03-E	Even	Cracking	Structural
CENTRAL ST-03-E	Even	Cracking	Structural
CENTRAL ST-03-E	Even	Cracking	Structural
CENTRAL ST-03-E	Even	Cracking	Structural
DEERHILL ROAD Total: 10			
DEERHILL RD-O	Odd	Depression	Structural
DEERHILL RD-O	Odd	Cracking	Structural
DEERHILL RD-O	Odd	Cracking	Structural
DEERHILL RD-O	Odd	Patch	Structural
DEERHILL RD-O	Odd	Cracking	Structural
DEERHILL RD-O	Odd	Tree Roots	Structural
DEERHILL RD-O	Odd	Tree Roots	Structural
DEERHILL RD-O	Odd	Cracking	Structural
DEERHILL RD-O	Odd	Cracking	Structural
DEERHILL RD-O	Odd	Cracking	Structural
DESMOND AVENUE Total: 31			
DESMOND AVE-E	Even	Cracking	Structural
DESMOND AVE-E	Even	Cracking	Structural
DESMOND AVE-E	Even	Depression	Structural
DESMOND AVE-E	Even	Cracking	Structural
DESMOND AVE-E	Even	Depression	Structural
DESMOND AVE-E	Even	Cracking	Structural
DESMOND AVE-E	Even	Depression	Structural
DESMOND AVE-E	Even	Patch	Structural
DESMOND AVE-E	Even	Patch	Structural
DESMOND AVE-E	Even	Patch	Structural
DESMOND AVE-E	Even	Depression	Structural

	Location	Obstruction	Type
DESMOND AVE-E	Even	Cracking	Structural
DESMOND AVE-E	Even	Depression	Structural
DESMOND AVE-E	Even	Cracking	Structural
DESMOND AVE-E	Even	Depression	Structural
DESMOND AVE-E	Even	Depression	Structural
DESMOND AVE-E	Even	Depression	Structural
DESMOND AVE-E	Even	Depression	Structural
DESMOND AVE-E	Even	Cracking	Structural
DESMOND AVE-E	Even	Cracking	Structural
DESMOND AVE-E	Even	Cracking	Structural
DESMOND AVE-E	Even	Cracking	Structural
DESMOND AVE-E	Even	Patch	Structural
DESMOND AVE-E	Even	Cracking	Structural
DESMOND AVE-E	Even	Depression	Structural
DESMOND AVE-E	Even	Cracking	Structural
DESMOND AVE-E	Even	Depression	Structural
DESMOND AVE-E	Even	Depression	Structural
DESMOND AVE-E	Even	Cracking	Structural
DESMOND AVE-E	Even	Patch	Structural
DESMOND AVE-E	Even	Depression	Structural
ELM STREET		Total: 6	
ELM ST-O	Odd	Cracking	Structural
ELM ST-O	Odd	Cracking	Structural
ELM ST-O	Odd	Cracking	Structural
ELM ST-O	Odd	Cracking	Structural
ELM ST-O	Odd	Tree Roots	Structural
ELM ST-O	Odd	Patch	Structural
FOREST STREET		Total: 40	
FOREST ST-03-O	Odd	Depression	Structural
FOREST ST-03-O	Odd	Cracking	Structural
FOREST ST-03-O	Odd	Depression	Structural
FOREST ST-03-O	Odd	Cracking	Structural
FOREST ST-03-O	Odd	Depression	Structural
FOREST ST-03-O	Odd	Cracking	Structural
FOREST ST-03-O	Odd	Cracking	Structural
FOREST ST-03-O	Odd	Depression	Structural
FOREST ST-03-O	Odd	Cracking	Structural
FOREST ST-03-O	Odd	Depression	Structural
FOREST ST-03-O	Odd	Cracking	Structural
FOREST ST-03-O	Odd	Cracking	Structural
FOREST ST-03-O	Odd	Depression	Structural
FOREST ST-03-O	Odd	Depression	Structural
FOREST ST-04-O	Odd	Depression	Structural
FOREST ST-04-O	Odd	Cracking	Structural
FOREST ST-04-O	Odd	Cracking	Structural
FOREST ST-01-E	Even	Cracking	Structural
FOREST ST-01-E	Even	Cracking	Structural
FOREST ST-01-E	Even	Depression	Structural
FOREST ST-01-E	Even	Cracking	Structural
FOREST ST-01-E	Even	Depression	Structural
FOREST ST-01-E	Even	Depression	Structural
FOREST ST-01-E	Even	Cracking	Structural
FOREST ST-01-E	Even	Depression	Structural
FOREST ST-01-E	Even	Cracking	Structural
FOREST ST-01-E	Even	Tree Roots	Structural
FOREST ST-01-E	Even	Depression	Structural

	Location	Obstruction	Type
FOREST ST-01-E	Even	Depression	Structural
FOREST ST-02-E	Even	Depression	Structural
FOREST ST-02-E	Even	Cracking	Structural
FOREST ST-02-E	Even	Depression	Structural
FOREST ST-02-E	Even	Patch	Structural
FOREST ST-02-E	Even	Cracking	Structural
FOREST ST-02-E	Even	Patch	Structural
FOREST ST-02-E	Even	Patch	Structural
FOREST ST-02-E	Even	Depression	Structural
FOREST ST-02-E	Even	Cracking	Structural
FOREST ST-02-E	Even	Patch	Structural
GREENBRIER ROAD		Total: 9	
GREENBRIER RD-E	Even	Cracking	Structural
GREENBRIER RD-E	Even	Cracking	Structural
GREENBRIER RD-E	Even	Cracking	Structural
GREENBRIER RD-E	Even	Depression	Structural
GREENBRIER RD-E	Even	Cracking	Structural
GREENBRIER RD-E	Even	Tree Roots	Structural
GREENBRIER RD-E	Even	Cracking	Structural
GREENBRIER RD-E	Even	Cracking	Structural
GREENBRIER RD-E	Even	Depression	Structural
HARBOR STREET		Total: 1	
HARBOR ST-02-E	Even	Cracking	Structural
KNIGHT ROAD		Total: 16	
KNIGHT RD-01-O	Odd	Cracking	Structural
KNIGHT RD-01-O	Odd	Tree Roots	Structural
KNIGHT RD-01-O	Odd	Cracking	Structural
KNIGHT RD-01-O	Odd	Depression	Structural
KNIGHT RD-01-O	Odd	Cracking	Structural
KNIGHT RD-01-O	Odd	Bush/Shrub	Maintenance
KNIGHT RD-01-O	Odd	Depression	Structural
KNIGHT RD-01-O	Odd	Cracking	Structural
KNIGHT RD-01-O	Odd	Bush/Shrub	Maintenance
KNIGHT RD-01-E	Even	Cracking	Structural
KNIGHT RD-01-E	Even	Cracking	Structural
KNIGHT RD-01-E	Even	Cracking	Structural
KNIGHT RD-01-E	Even	Bush/Shrub	Maintenance
KNIGHT RD-01-E	Even	Cracking	Structural
KNIGHT RD-01-E	Even	Cracking	Structural
KNIGHT RD-01-E	Even	Cracking	Structural
LEDGEWOOD ROAD		Total: 1	
LEDGEWOOD RD-01-E	Even	Tree Roots	Structural
LINCOLN AVENUE		Total: 25	
LINCOLN AVE-O	Odd	Lifting	Structural
LINCOLN AVE-O	Odd	Tree Roots	Structural
LINCOLN AVE-O	Odd	Cracking	Structural
LINCOLN AVE-O	Odd	Cracking	Structural
LINCOLN AVE-O	Odd	Cracking	Structural
LINCOLN AVE-O	Odd	Lifting	Structural
LINCOLN AVE-O	Odd	Cracking	Structural
LINCOLN AVE-O	Odd	Cracking	Structural
LINCOLN AVE-O	Odd	Cracking	Structural
LINCOLN AVE-O	Odd	Tree Roots	Structural
LINCOLN AVE-O	Odd	Cracking	Structural
LINCOLN AVE-O	Odd	Cracking	Structural
LINCOLN AVE-E	Even	Cracking W/Grass	Structural

	Location	Obstruction	Type
LINCOLN AVE-E	Even	Cracking	Structural
LINCOLN AVE-E	Even	Depression	Structural
LINCOLN AVE-E	Even	Tree Roots	Structural
LINCOLN AVE-E	Even	Tree Roots	Structural
LINCOLN AVE-E	Even	Cracking	Structural
LINCOLN AVE-E	Even	Cracking	Structural
LINCOLN AVE-E	Even	Depression	Structural
LINCOLN AVE-E	Even	Cracking W/Grass	Structural
LINCOLN AVE-E	Even	Depression	Structural
LINCOLN AVE-E	Even	Cracking W/Grass	Structural
LINCOLN AVE-E	Even	Depression	Structural
LINCOLN AVE-E	Even	Depression	Structural
LINCOLN STREET Total: 67			
LINCOLN ST-01-O	Odd	Spalling	Structural
LINCOLN ST-01-O	Odd	Depression	Structural
LINCOLN ST-01-O	Odd	Spalling	Structural
LINCOLN ST-01-O	Odd	Cracking	Structural
LINCOLN ST-01-O	Odd	Spalling	Structural
LINCOLN ST-01-O	Odd	Depression	Structural
LINCOLN ST-01-O	Odd	Cracking	Structural
LINCOLN ST-01-O	Odd	Spalling	Structural
LINCOLN ST-01-O	Odd	Depression	Structural
LINCOLN ST-01-O	Odd	Cracking	Structural
LINCOLN ST-01-O	Odd	Cracking	Structural
LINCOLN ST-01-O	Odd	Cracking	Structural
LINCOLN ST-01-O	Odd	Cracking	Structural
LINCOLN ST-01-O	Odd	Depression	Structural
LINCOLN ST-01-O	Odd	Cracking	Structural
LINCOLN ST-01-O	Odd	Depression	Structural
LINCOLN ST-01-O	Odd	Cracking	Structural
LINCOLN ST-01-O	Odd	Cracking	Structural
LINCOLN ST-02-O	Odd	Cracking	Structural
LINCOLN ST-02-O	Odd	Cracking	Structural
LINCOLN ST-02-O	Odd	Patch	Structural
LINCOLN ST-02-O	Odd	Cracking	Structural
LINCOLN ST-03-O	Odd	Cracking	Structural
LINCOLN ST-03-O	Odd	Cracking	Structural
LINCOLN ST-04-O	Odd	Patch	Structural
LINCOLN ST-04-O	Odd	Cracking	Structural
LINCOLN ST-04-O	Odd	Patch	Structural
LINCOLN ST-04-O	Odd	Cracking	Structural
LINCOLN ST-04-O	Odd	Patch	Structural
LINCOLN ST-04-O	Odd	Patch	Structural
LINCOLN ST-04-O	Odd	Patch	Structural
LINCOLN ST-04-O	Odd	Cracking	Structural
LINCOLN ST-04-O	Odd	Patch	Structural
LINCOLN ST-04-O	Odd	Depression	Structural
LINCOLN ST-01-E	Even	Tree Roots	Structural
LINCOLN ST-01-E	Even	Tree Roots	Structural
LINCOLN ST-01-E	Even	Depression	Structural
LINCOLN ST-01-E	Even	Tree Roots	Structural
LINCOLN ST-01-E	Even	Cracking	Structural
LINCOLN ST-01-E	Even	Cracking	Structural
LINCOLN ST-01-E	Even	Tree Roots	Structural
LINCOLN ST-01-E	Even	Tree Roots	Structural
LINCOLN ST-01-E	Even	Tree Roots	Structural
LINCOLN ST-02-E	Even	Tree Roots	Structural

	Location	Obstruction	Type
LINCOLN ST-02-E	Even	Depression	Structural
LINCOLN ST-02-E	Even	Tree Roots	Structural
LINCOLN ST-03-E	Even	Cracking	Structural
LINCOLN ST-04-E	Even	Depression	Structural
LINCOLN ST-04-E	Even	Cracking	Structural
LINCOLN ST-04-E	Even	Cracking	Structural
LINCOLN ST-04-E	Even	Depression	Structural
LINCOLN ST-05-E	Even	Depression	Structural
LINCOLN ST-05-E	Even	Cracking	Structural
LINCOLN ST-05-E	Even	Patch	Structural
LINCOLN ST-05-E	Even	Patch	Structural
LINCOLN ST-05-E	Even	Cracking	Structural
LINCOLN ST-05-E	Even	Cracking	Structural
LINCOLN ST-05-E	Even	Cracking	Structural
LINCOLN ST-05-E	Even	Depression	Structural
LINCOLN ST-05-E	Even	Depression	Structural
LINCOLN ST-05-E	Even	Cracking	Structural
LINCOLN ST-05-E	Even	Depression	Structural
LINCOLN ST-05-E	Even	Cracking	Structural
LINCOLN ST-05-E	Even	Patch	Structural
LINCOLN ST-05-E	Even	Patch	Structural
LINCOLN ST-05-E	Even	Patch	Structural
LINCOLN ST-05-E	Even	Depression	Structural
MASCONOMO STREET		Total: 29	
MASCONOMO ST-02-O	Odd	Cracking	Structural
MASCONOMO ST-02-O	Odd	Cracking	Structural
MASCONOMO ST-02-O	Odd	Cracking	Structural
MASCONOMO ST-02-O	Odd	Depression	Structural
MASCONOMO ST-02-O	Odd	Depression	Structural
MASCONOMO ST-02-O	Odd	Cracking	Structural
MASCONOMO ST-02-O	Odd	Patch	Structural
MASCONOMO ST-02-O	Odd	Patch	Structural
MASCONOMO ST-02-O	Odd	Cracking	Structural
MASCONOMO ST-02-O	Odd	Depression	Structural
MASCONOMO ST-02-O	Odd	Cracking	Structural
MASCONOMO ST-02-O	Odd	Depression	Structural
MASCONOMO ST-02-E	Even	Cracking	Structural
MASCONOMO ST-02-E	Even	Cracking	Structural
MASCONOMO ST-02-E	Even	Depression	Structural
MASCONOMO ST-02-E	Even	Patch	Structural
MASCONOMO ST-02-E	Even	Cracking	Structural
MASCONOMO ST-02-E	Even	Missing Section/Panel	Structural
MASCONOMO ST-02-E	Even	Cracking	Structural
MASCONOMO ST-02-E	Even	Depression	Structural
MASCONOMO ST-02-E	Even	Patch	Structural
MASCONOMO ST-03-E	Even	Patch	Structural
MASCONOMO ST-03-E	Even	Cracking	Structural
MASCONOMO ST-03-E	Even	Cracking	Structural
MASCONOMO ST-03-E	Even	Patch	Structural
MASCONOMO ST-03-E	Even	Patch	Structural
MASCONOMO ST-03-E	Even	Depression	Structural
MASCONOMO ST-03-E	Even	Cracking	Structural
MASCONOMO ST-03-E	Even	Patch	Structural
NORTH STREET		Total: 38	
NORTH ST-O	Odd	Depression	Structural
NORTH ST-O	Odd	Depression	Structural
NORTH ST-O	Odd	Cracking	Structural

	Location	Obstruction	Type
NORTH ST-O	Odd	Cracking	Structural
NORTH ST-O	Odd	Cracking	Structural
NORTH ST-O	Odd	Cracking	Structural
NORTH ST-O	Odd	Cracking	Structural
NORTH ST-O	Odd	Cracking	Structural
NORTH ST-O	Odd	Depression	Structural
NORTH ST-O	Odd	Cracking	Structural
NORTH ST-O	Odd	Cracking	Structural
NORTH ST-O	Odd	Cracking	Structural
NORTH ST-O	Odd	Cracking	Structural
NORTH ST-O	Odd	Cracking	Structural
NORTH ST-O	Odd	Depression	Structural
NORTH ST-O	Odd	Cracking	Structural
NORTH ST-O	Odd	Cracking	Structural
NORTH ST-O	Odd	Depression	Structural
NORTH ST-O	Odd	Depression	Structural
NORTH ST-E	Even	Cracking	Structural
NORTH ST-E	Even	Cracking	Structural
NORTH ST-E	Even	Cracking	Structural
NORTH ST-E	Even	Cracking	Structural
NORTH ST-E	Even	Cracking	Structural
NORTH ST-E	Even	Cracking	Structural
NORTH ST-E	Even	Cracking	Structural
NORTH ST-E	Even	Bush/Shrub	Maintenance
NORTH ST-E	Even	Cracking	Structural
NORTH ST-E	Even	Cracking	Structural
NORTH ST-E	Even	Cracking	Structural
NORTH ST-E	Even	Cracking	Structural
NORTH ST-E	Even	Cracking	Structural
NORTH ST-E	Even	Bush/Shrub	Maintenance
NORTH ST-E	Even	Cracking	Structural
NORTH ST-E	Even	Cracking	Structural
NORTH ST-E	Even	Cracking	Structural
NORTH ST-E	Even	Cracking	Structural
NORTH ST-E	Even	Cracking	Structural
NORWOOD AVENUE		Total:126	
NORWOOD AVE-01-O	Odd	Depression	Structural
NORWOOD AVE-01-O	Odd	Cracking	Structural
NORWOOD AVE-01-O	Odd	Depression	Structural
NORWOOD AVE-01-O	Odd	Cracking	Structural
NORWOOD AVE-01-O	Odd	Depression	Structural
NORWOOD AVE-01-O	Odd	Cracking	Structural
NORWOOD AVE-01-O	Odd	Depression	Structural
NORWOOD AVE-01-O	Odd	Cracking	Structural
NORWOOD AVE-02-O	Odd	Cracking	Structural
NORWOOD AVE-02-O	Odd	Depression	Structural
NORWOOD AVE-02-O	Odd	Patch	Structural
NORWOOD AVE-02-O	Odd	Depression	Structural
NORWOOD AVE-02-O	Odd	Patch	Structural
NORWOOD AVE-03-O	Odd	Depression	Structural
NORWOOD AVE-03-O	Odd	Cracking	Structural
NORWOOD AVE-03-O	Odd	Depression	Structural
NORWOOD AVE-03-O	Odd	Cracking	Structural
NORWOOD AVE-03-O	Odd	Depression	Structural
NORWOOD AVE-03-O	Odd	Patch	Structural
NORWOOD AVE-03-O	Odd	Cracking	Structural
NORWOOD AVE-03-O	Odd	Patch	Structural

	Location	Obstruction	Type
NORWOOD AVE-03-O	Odd	Cracking	Structural
NORWOOD AVE-03-O	Odd	Depression	Structural
NORWOOD AVE-03-O	Odd	Cracking	Structural
NORWOOD AVE-03-O	Odd	Depression	Structural
NORWOOD AVE-03-O	Odd	Cracking	Structural
NORWOOD AVE-03-O	Odd	Depression	Structural
NORWOOD AVE-03-O	Odd	Patch	Structural
NORWOOD AVE-03-O	Odd	Depression	Structural
NORWOOD AVE-03-O	Odd	Cracking	Structural
NORWOOD AVE-03-O	Odd	Depression	Structural
NORWOOD AVE-03-O	Odd	Depression	Structural
NORWOOD AVE-03-O	Odd	Cracking	Structural
NORWOOD AVE-03-O	Odd	Cracking	Structural
NORWOOD AVE-04-O	Odd	Cracking	Structural
NORWOOD AVE-04-O	Odd	Patch	Structural
NORWOOD AVE-04-O	Odd	Depression	Structural
NORWOOD AVE-04-O	Odd	Cracking	Structural
NORWOOD AVE-04-O	Odd	Patch	Structural
NORWOOD AVE-04-O	Odd	Depression	Structural
NORWOOD AVE-04-O	Odd	Patch	Structural
NORWOOD AVE-04-O	Odd	Cracking	Structural
NORWOOD AVE-04-O	Odd	Cracking	Structural
NORWOOD AVE-04-O	Odd	Depression	Structural
NORWOOD AVE-05-O	Odd	Patch	Structural
NORWOOD AVE-05-O	Odd	Depression	Structural
NORWOOD AVE-05-O	Odd	Patch	Structural
NORWOOD AVE-05-O	Odd	Cracking	Structural
NORWOOD AVE-05-O	Odd	Missing Section/Panel	Structural
NORWOOD AVE-05-O	Odd	Cracking	Structural
NORWOOD AVE-05-O	Odd	Depression	Structural
NORWOOD AVE-05-O	Odd	Cracking	Structural
NORWOOD AVE-05-O	Odd	Cracking	Structural
NORWOOD AVE-05-O	Odd	Patch	Structural
NORWOOD AVE-05-O	Odd	Depression	Structural
NORWOOD AVE-05-O	Odd	Cracking	Structural
NORWOOD AVE-05-O	Odd	Cracking	Structural
NORWOOD AVE-05-O	Odd	Cracking	Structural
NORWOOD AVE-05-O	Odd	Depression	Structural
NORWOOD AVE-05-O	Odd	Depression	Structural
NORWOOD AVE-05-O	Odd	Depression	Structural
NORWOOD AVE-05-O	Odd	Missing Section/Panel	Structural
NORWOOD AVE-05-O	Odd	Depression	Structural
NORWOOD AVE-05-O	Odd	Cracking	Structural
NORWOOD AVE-05-O	Odd	Depression	Structural
NORWOOD AVE-05-O	Odd	Cracking	Structural
NORWOOD AVE-05-O	Odd	Cracking	Structural
NORWOOD AVE-05-O	Odd	Patch	Structural
NORWOOD AVE-05-O	Odd	Depression	Structural
NORWOOD AVE-01-E	Even	Cracking	Structural
NORWOOD AVE-01-E	Even	Sidewalk Cross Slope	Structural
NORWOOD AVE-01-E	Even	Sidewalk Cross Slope	Structural
NORWOOD AVE-01-E	Even	Cracking	Structural
NORWOOD AVE-01-E	Even	Cracking	Structural
NORWOOD AVE-01-E	Even	Depression	Structural
NORWOOD AVE-01-E	Even	Depression	Structural
NORWOOD AVE-01-E	Even	Patch	Structural
NORWOOD AVE-01-E	Even	Depression	Structural

	Location	Obstruction	Type
NORWOOD AVE-01-E	Even	Cracking	Structural
NORWOOD AVE-02-E	Even	Depression	Structural
NORWOOD AVE-02-E	Even	Cracking	Structural
NORWOOD AVE-02-E	Even	Cracking	Structural
NORWOOD AVE-02-E	Even	Depression	Structural
NORWOOD AVE-03-E	Even	Depression	Structural
NORWOOD AVE-03-E	Even	Cracking	Structural
NORWOOD AVE-03-E	Even	Patch	Structural
NORWOOD AVE-03-E	Even	Depression	Structural
NORWOOD AVE-03-E	Even	Depression	Structural
NORWOOD AVE-03-E	Even	Cracking	Structural
NORWOOD AVE-03-E	Even	Depression	Structural
NORWOOD AVE-03-E	Even	Cracking	Structural
NORWOOD AVE-03-E	Even	Depression	Structural
NORWOOD AVE-03-E	Even	Cracking	Structural
NORWOOD AVE-03-E	Even	Cracking	Structural
NORWOOD AVE-03-E	Even	Cracking	Structural
NORWOOD AVE-03-E	Even	Missing Section/Panel	Structural
NORWOOD AVE-03-E	Even	Depression	Structural
NORWOOD AVE-03-E	Even	Missing Section/Panel	Structural
NORWOOD AVE-03-E	Even	Depression	Structural
NORWOOD AVE-03-E	Even	Cracking	Structural
NORWOOD AVE-03-E	Even	Depression	Structural
NORWOOD AVE-03-E	Even	Cracking	Structural
NORWOOD AVE-03-E	Even	Cracking	Structural
NORWOOD AVE-04-E	Even	Depression	Structural
NORWOOD AVE-04-E	Even	Cracking	Structural
NORWOOD AVE-04-E	Even	Cracking	Structural
NORWOOD AVE-04-E	Even	Depression	Structural
NORWOOD AVE-04-E	Even	Cracking	Structural
NORWOOD AVE-04-E	Even	Patch	Structural
NORWOOD AVE-04-E	Even	Cracking	Structural
NORWOOD AVE-04-E	Even	Cracking	Structural
NORWOOD AVE-04-E	Even	Depression	Structural
NORWOOD AVE-05-E	Even	Cracking	Structural
NORWOOD AVE-05-E	Even	Depression	Structural
NORWOOD AVE-05-E	Even	Cracking	Structural
NORWOOD AVE-05-E	Even	Depression	Structural
NORWOOD AVE-05-E	Even	Depression	Structural
NORWOOD AVE-05-E	Even	Cracking	Structural
NORWOOD AVE-05-E	Even	Cracking	Structural
NORWOOD AVE-05-E	Even	Depression	Structural
NORWOOD AVE-05-E	Even	Patch	Structural
NORWOOD AVE-05-E	Even	Depression	Structural
NORWOOD AVE-05-E	Even	Cracking	Structural
NORWOOD AVE-05-E	Even	Depression	Structural
NORWOOD AVE-05-E	Even	Cracking	Structural
NORWOOD AVE-05-E	Even	Depression	Structural
OCEAN STREET		Total: 8	
OCEAN ST-01-O	Odd	Missing Section/Panel	Structural
OCEAN ST-01-O	Odd	Cracking	Structural
OCEAN ST-01-O	Odd	Cracking	Structural
OCEAN ST-01-O	Odd	Cracking	Structural
OCEAN ST-01-O	Odd	Cracking	Structural
OCEAN ST-01-O	Odd	Cracking	Structural
OCEAN ST-01-O	Odd	Cracking	Structural
OCEAN ST-01-O	Odd	Sidewalk Cross Slope	Structural

Page 14 of 29

	Location	Obstruction	Type
PINE ST-05-O	Odd	Depression	Structural
PINE ST-05-O	Odd	Missing Section/Panel	Structural
PINE ST-05-O	Odd	Cracking	Structural
PINE ST-05-O	Odd	Depression	Structural
PINE ST-05-O	Odd	Cracking	Structural
PINE ST-05-O	Odd	Depression	Structural
PINE ST-05-O	Odd	Cracking	Structural
PINE ST-05-O	Odd	Cracking	Structural
PINE ST-05-O	Odd	Cracking	Structural
PINE ST-05-O	Odd	Cracking	Structural
PINE ST-05-O	Odd	Depression	Structural
PINE ST-05-O	Odd	Cracking	Structural
PINE ST-05-O	Odd	Depression	Structural
PINE ST-05-O	Odd	Cracking	Structural
PINE ST-05-O	Odd	Depression	Structural
PINE ST-05-O	Odd	Patch	Structural
PINE ST-05-O	Odd	Depression	Structural
PINE ST-05-O	Odd	Cracking	Structural
PINE ST-06-O	Odd	Cracking	Structural
PINE ST-06-O	Odd	Depression	Structural
PINE ST-06-O	Odd	Depression	Structural
PINE ST-06-O	Odd	Cracking	Structural
PINE ST-06-O	Odd	Cracking	Structural
PINE ST-06-O	Odd	Depression	Structural
PINE ST-06-O	Odd	Cracking	Structural
PINE ST-06-O	Odd	Cracking	Structural
PINE ST-06-O	Odd	Depression	Structural
PINE ST-07-O	Odd	Cracking	Structural
PINE ST-07-O	Odd	Depression	Structural
PINE ST-07-O	Odd	Patch	Structural
PINE ST-07-O	Odd	Cracking	Structural
PINE ST-07-O	Odd	Depression	Structural
PINE ST-07-O	Odd	Utility Pole	Obstruction
PINE ST-07-O	Odd	Cracking	Structural
PINE ST-07-O	Odd	Depression	Structural
PINE ST-08-O	Odd	Depression	Structural
PINE ST-08-O	Odd	Cracking	Structural
PINE ST-08-O	Odd	Patch	Structural
PINE ST-08-O	Odd	Cracking	Structural
PINE ST-08-O	Odd	Tree Roots	Structural
PINE ST-08-O	Odd	Tree Roots	Structural
PINE ST-08-O	Odd	Cracking	Structural
PINE ST-08-O	Odd	Cracking	Structural
PINE ST-08-O	Odd	Cracking	Structural
PINE ST-08-O	Odd	Patch	Structural
PINE ST-08-O	Odd	Depression	Structural
PINE ST-09-O	Odd	Cracking	Structural
PINE ST-09-O	Odd	Cracking	Structural
PINE ST-09-O	Odd	Patch	Structural
PINE ST-09-O	Odd	Patch	Structural
PINE ST-09-O	Odd	Patch	Structural
PINE ST-09-O	Odd	Cracking	Structural
PINE ST-09-O	Odd	Cracking	Structural
PINE ST-09-O	Odd	Patch	Structural

	Location	Obstruction	Type
PINE ST-09-O	Odd	Cracking	Structural
PINE ST-09-O	Odd	Patch	Structural
PINE ST-09-O	Odd	Cracking	Structural
PINE ST-09-O	Odd	Depression	Structural
PINE ST-09-O	Odd	Depression	Structural
PINE ST-11-O	Odd	Cracking	Structural
PINE ST-11-O	Odd	Tree Roots	Structural
PINE ST-11-O	Odd	Patch	Structural
PINE ST-11-O	Odd	Depression	Structural
PINE ST-11-O	Odd	Cracking	Structural
PINE ST-11-O	Odd	Cracking	Structural
PINE ST-11-O	Odd	Cracking	Structural
PINE ST-11-O	Odd	Depression	Structural
PINE ST-11-O	Odd	Cracking	Structural
PINE ST-11-O	Odd	Patch	Structural
PINE ST-11-O	Odd	Patch	Structural
PINE ST-11-O	Odd	Cracking	Structural
PINE ST-11-O	Odd	Cracking	Structural
PINE ST-11-O	Odd	Cracking	Structural
PINE ST-11-O	Odd	Depression	Structural
PINE ST-11-O	Odd	Cracking	Structural
PINE ST-11-O	Odd	Cracking	Structural
PINE ST-11-O	Odd	Cracking	Structural
PINE ST-11-O	Odd	Depression	Structural
PINE ST-12-O	Odd	Cracking	Structural
PINE ST-12-O	Odd	Patch	Structural
PINE ST-12-O	Odd	Tree Roots	Structural
PINE ST-12-O	Odd	Cracking	Structural
PINE ST-12-O	Odd	Cracking	Structural
PINE ST-12-O	Odd	Patch	Structural
PINE ST-12-O	Odd	Cracking	Structural
PINE ST-12-O	Odd	Cracking	Structural
PINE ST-12-O	Odd	Patch	Structural
PINE ST-12-O	Odd	Depression	Structural
PINE ST-12-O	Odd	Cracking	Structural
PINE ST-12-O	Odd	Patch	Structural
PINE ST-12-O	Odd	Patch	Structural
PINE ST-12-O	Odd	Cracking	Structural
PINE ST-12-O	Odd	Cracking	Structural
PINE ST-12-O	Odd	Patch	Structural
PINE ST-12-O	Odd	Patch	Structural
PINE ST-08-E	Even	Cracking	Structural
PINE ST-08-E	Even	Cracking	Structural
PINE ST-08-E	Even	Cracking	Structural
PINE ST-08-E	Even	Patch	Structural
PINE ST-08-E	Even	Patch	Structural
PINE ST-08-E	Even	Tree Roots	Structural
PINE ST-08-E	Even	Cracking	Structural
PINE ST-08-E	Even	Patch	Structural
PINE ST-09-E	Even	Tree Roots	Structural
PINE ST-09-E	Even	Cracking	Structural
PINE ST-09-E	Even	Patch	Structural
PINE ST-09-E	Even	Cracking	Structural
PINE ST-09-E	Even	Cracking	Structural
PINE ST-09-E	Even	Cracking	Structural
PINE ST-09-E	Even	Depression	Structural
PINE ST-09-E	Even	Patch	Structural

	Location	Obstruction	Type
PINE ST-09-E	Even	Cracking	Structural
PINE ST-09-E	Even	Patch	Structural
PINE ST-09-E	Even	Patch	Structural
PINE ST-09-E	Even	Patch	Structural
PINE ST-09-E	Even	Depression	Structural
PINE ST-09-E	Even	Patch	Structural
PINE ST-09-E	Even	Patch	Structural
PINE ST-09-E	Even	Tree Roots	Structural
PINE ST-10-E	Even	Cracking	Structural
PINE ST-10-E	Even	Cracking	Structural
PINE ST-10-E	Even	Patch	Structural
PINE ST-10-E	Even	Depression	Structural
PINE ST-10-E	Even	Tree Roots	Structural
PINE ST-10-E	Even	Patch	Structural
PINE ST-10-E	Even	Patch	Structural
PINE ST-10-E	Even	Patch	Structural
PINE ST-10-E	Even	Patch	Structural
PINE ST-10-E	Even	Patch	Structural
PINE ST-10-E	Even	Patch	Structural
PINE ST-10-E	Even	Cracking	Structural
PINE ST-10-E	Even	Depression	Structural
PINE ST-10-E	Even	Patch	Structural
PINE ST-10-E	Even	Cracking	Structural
PINE ST-10-E	Even	Cracking	Structural
PINE ST-10-E	Even	Patch	Structural
PINE ST-10-E	Even	Depression	Structural
PINE ST-10-E	Even	Depression	Structural
PINE ST-10-E	Even	Patch	Structural
PINE ST-10-E	Even	Patch	Structural
PINE ST-11-E	Even	Patch	Structural
PINE ST-11-E	Even	Patch	Structural
PINE ST-11-E	Even	Patch	Structural
PINE ST-11-E	Even	Patch	Structural
PINE ST-11-E	Even	Depression	Structural
PINE ST-11-E	Even	Depression	Structural
PINE ST-11-E	Even	Missing Section/Panel	Structural
PINE ST-11-E	Even	Depression	Structural
PINE ST-11-E	Even	Bush/Shrub	Maintenance
PINE ST-11-E	Even	Depression	Structural
PINE ST-11-E	Even	Depression	Structural
PINE ST-11-E	Even	Depression	Structural
PINE ST-11-E	Even	Patch	Structural
PINE ST-12-E	Even	Patch	Structural
PINE ST-12-E	Even	Cracking	Structural
PINE ST-12-E	Even	Patch	Structural
PINE ST-12-E	Even	Patch	Structural
PINE ST-12-E	Even	Patch	Structural
PINE ST-12-E	Even	Depression	Structural
PINE ST-12-E	Even	Depression	Structural
PINE ST-12-E	Even	Cracking	Structural
PINE ST-12-E	Even	Depression	Structural
PINE ST-12-E	Even	Cracking	Structural
PINE ST-12-E	Even	Patch	Structural
PINE ST-12-E	Even	Tree Roots	Structural
PINEWOOD ROAD		Total: 5	
PINEWOOD RD-E	Even	Cracking	Structural

	Location	Obstruction	Type
PINEWOOD RD-E	Even	Cracking	Structural
PINEWOOD RD-E	Even	Depression	Structural
PINEWOOD RD-E	Even	Cracking	Structural
PINEWOOD RD-E	Even	Cracking	Structural
PLEASANT STREET		Total: 97	
PLEASANT ST-01-O	Odd	Depression	Structural
PLEASANT ST-01-O	Odd	Cracking	Structural
PLEASANT ST-01-O	Odd	Depression	Structural
PLEASANT ST-01-O	Odd	Depression	Structural
PLEASANT ST-01-O	Odd	Cracking	Structural
PLEASANT ST-02-O	Odd	Patch	Structural
PLEASANT ST-02-O	Odd	Patch	Structural
PLEASANT ST-02-O	Odd	Patch	Structural
PLEASANT ST-02-O	Odd	Cracking	Structural
PLEASANT ST-02-O	Odd	Patch	Structural
PLEASANT ST-03-O	Odd	Patch	Structural
PLEASANT ST-03-O	Odd	Cracking	Structural
PLEASANT ST-03-O	Odd	Patch	Structural
PLEASANT ST-03-O	Odd	Cracking	Structural
PLEASANT ST-03-O	Odd	Cracking	Structural
PLEASANT ST-03-O	Odd	Patch	Structural
PLEASANT ST-04-O	Odd	Patch	Structural
PLEASANT ST-04-O	Odd	Cracking	Structural
PLEASANT ST-04-O	Odd	Patch	Structural
PLEASANT ST-05-O	Odd	Patch	Structural
PLEASANT ST-05-O	Odd	Patch	Structural
PLEASANT ST-05-O	Odd	Cracking	Structural
PLEASANT ST-05-O	Odd	Patch	Structural
PLEASANT ST-05-O	Odd	Patch	Structural
PLEASANT ST-05-O	Odd	Patch	Structural
PLEASANT ST-06-O	Odd	Patch	Structural
PLEASANT ST-06-O	Odd	Cracking	Structural
PLEASANT ST-06-O	Odd	Patch	Structural
PLEASANT ST-06-O	Odd	Cracking	Structural
PLEASANT ST-06-O	Odd	Patch	Structural
PLEASANT ST-06-O	Odd	Cracking	Structural
PLEASANT ST-06-O	Odd	Cracking	Structural
PLEASANT ST-06-O	Odd	Patch	Structural
PLEASANT ST-06-O	Odd	Patch	Structural
PLEASANT ST-06-O	Odd	Patch	Structural
PLEASANT ST-06-O	Odd	Patch	Structural
PLEASANT ST-06-O	Odd	Patch	Structural
PLEASANT ST-06-O	Odd	Patch	Structural
PLEASANT ST-07-O	Odd	Patch	Structural
PLEASANT ST-07-O	Odd	Patch	Structural
PLEASANT ST-07-O	Odd	Patch	Structural
PLEASANT ST-07-O	Odd	Patch	Structural
PLEASANT ST-07-O	Odd	Cracking	Structural
PLEASANT ST-07-O	Odd	Patch	Structural
PLEASANT ST-08-O	Odd	Patch	Structural
PLEASANT ST-08-O	Odd	Patch	Structural
PLEASANT ST-08-O	Odd	Patch	Structural
PLEASANT ST-08-O	Odd	Cracking	Structural
PLEASANT ST-08-O	Odd	Tree Roots	Structural
PLEASANT ST-08-O	Odd	Tree Roots	Structural
PLEASANT ST-08-O	Odd	Patch	Structural
PLEASANT ST-08-O	Odd	Tree Roots	Structural
PLEASANT ST-08-O	Odd	Patch	Structural

	Location	Obstruction	Type
PLEASANT ST-09-O	Odd	Cracking	Structural
PLEASANT ST-09-O	Odd	Depression	Structural
PLEASANT ST-09-O	Odd	Depression	Structural
PLEASANT ST-09-O	Odd	Tree Roots	Structural
PLEASANT ST-09-O	Odd	Cracking	Structural
PLEASANT ST-09-O	Odd	Tree Roots	Structural
PLEASANT ST-09-O	Odd	Tree Roots	Structural
PLEASANT ST-09-O	Odd	Depression	Structural
PLEASANT ST-09-O	Odd	Cracking	Structural
PLEASANT ST-09-O	Odd	Cracking	Structural
PLEASANT ST-09-O	Odd	Cracking	Structural
PLEASANT ST-09-O	Odd	Tree Roots	Structural
PLEASANT ST-10-O	Odd	Patch	Structural
PLEASANT ST-10-O	Odd	Cracking	Structural
PLEASANT ST-10-O	Odd	Depression	Structural
PLEASANT ST-10-O	Odd	Cracking	Structural
PLEASANT ST-10-O	Odd	Cracking	Structural
PLEASANT ST-10-O	Odd	Cracking	Structural
PLEASANT ST-08-E	Even	Cracking	Structural
PLEASANT ST-08-E	Even	Cracking	Structural
PLEASANT ST-08-E	Even	Cracking	Structural
PLEASANT ST-08-E	Even	Cracking	Structural
PLEASANT ST-08-E	Even	Cracking	Structural
PLEASANT ST-08-E	Even	Cracking	Structural
PLEASANT ST-08-E	Even	Patch	Structural
PLEASANT ST-09-E	Even	Cracking	Structural
PLEASANT ST-09-E	Even	Tree Roots	Structural
PLEASANT ST-09-E	Even	Depression	Structural
PLEASANT ST-09-E	Even	Cracking	Structural
PLEASANT ST-09-E	Even	Depression	Structural
PLEASANT ST-09-E	Even	Depression	Structural
PLEASANT ST-09-E	Even	Cracking	Structural
PLEASANT ST-09-E	Even	Tree Roots	Structural
PLEASANT ST-09-E	Even	Cracking	Structural
PLEASANT ST-09-E	Even	Depression	Structural
PLEASANT ST-09-E	Even	Cracking	Structural
PLEASANT ST-09-E	Even	Cracking	Structural
PLEASANT ST-09-E	Even	Tree Roots	Structural
PLEASANT ST-09-E	Even	Depression	Structural
PLEASANT ST-09-E	Even	Depression	Structural
PLEASANT ST-09-E	Even	Patch	Structural
PLEASANT ST-10-E	Even	Depression	Structural
PLEASANT ST-10-E	Even	Cracking	Structural
PLEASANT ST-10-E	Even	Cracking	Structural
PLEASANT ST-10-E	Even	Depression	Structural
PULASKI DRIVE	Total: 13		
PULASKI DRIVE-E	Even	Cracking	Structural
PULASKI DRIVE-E	Even	Patch	Structural
PULASKI DRIVE-E	Even	Cracking	Structural
PULASKI DRIVE-E	Even	Cracking	Structural
PULASKI DRIVE-E	Even	Cracking	Structural
PULASKI DRIVE-E	Even	Cracking	Structural
PULASKI DRIVE-E	Even	Patch	Structural
PULASKI DRIVE-E	Even	Tree Roots	Structural
PULASKI DRIVE-E	Even	Patch	Structural
PULASKI DRIVE-E	Even	Cracking	Structural
PULASKI DRIVE-E	Even	Cracking	Structural

	Location	Obstruction	Type
PULASKI DRIVE-E	Even	Patch	Structural
PULASKI DRIVE-E	Even	Cracking	Structural
PUTNAM COURT		Total: 1	
PUTNAM COURT-O	Odd	Cracking	Structural
RAYMOND STREET		Total: 22	
RAYMOND ST-01-O	Odd	Cracking	Structural
RAYMOND ST-01-O	Odd	Patch	Structural
RAYMOND ST-01-O	Odd	Cracking	Structural
RAYMOND ST-01-O	Odd	Cracking	Structural
RAYMOND ST-01-O	Odd	Cracking	Structural
RAYMOND ST-01-O	Odd	Cracking	Structural
RAYMOND ST-01-O	Odd	Cracking	Structural
RAYMOND ST-01-O	Odd	Depression	Structural
RAYMOND ST-01-O	Odd	Cracking	Structural
RAYMOND ST-01-O	Odd	Cracking	Structural
RAYMOND ST-01-O	Odd	Cracking	Structural
RAYMOND ST-01-O	Odd	Cracking	Structural
RAYMOND ST-01-O	Odd	Cracking	Structural
RAYMOND ST-02-O	Odd	Cracking	Structural
RAYMOND ST-02-O	Odd	Tree Roots	Structural
RAYMOND ST-02-O	Odd	Tree Roots	Structural
RAYMOND ST-02-O	Odd	Cracking	Structural
RAYMOND ST-02-O	Odd	Cracking	Structural
RAYMOND ST-03-O	Odd	Depression	Structural
RAYMOND ST-03-O	Odd	Patch	Structural
RAYMOND ST-03-O	Odd	Cracking	Structural
RAYMOND ST-03-E	Even	Cracking	Structural
ROCKWOOD HEIGHTS ROAD		Total: 16	
ROCKWOOD HEIGHTS RD-01-O	Odd	Cracking	Structural
ROCKWOOD HEIGHTS RD-01-O	Odd	Cracking	Structural
ROCKWOOD HEIGHTS RD-01-O	Odd	Cracking	Structural
ROCKWOOD HEIGHTS RD-01-O	Odd	Cracking	Structural
ROCKWOOD HEIGHTS RD-01-O	Odd	Cracking	Structural
ROCKWOOD HEIGHTS RD-01-O	Odd	Depression	Structural
ROCKWOOD HEIGHTS RD-01-O	Odd	Cracking	Structural
ROCKWOOD HEIGHTS RD-01-O	Odd	Cracking	Structural
ROCKWOOD HEIGHTS RD-01-O	Odd	Cracking	Structural
ROCKWOOD HEIGHTS RD-01-O	Odd	Cracking	Structural
ROCKWOOD HEIGHTS RD-01-O	Odd	Cracking	Structural
ROCKWOOD HEIGHTS RD-01-O	Odd	Cracking	Structural
ROCKWOOD HEIGHTS RD-02-O	Odd	Cracking	Structural
ROCKWOOD HEIGHTS RD-02-O	Odd	Tree Roots	Structural
ROCKWOOD HEIGHTS RD-02-O	Odd	Tree Roots	Structural
ROCKWOOD HEIGHTS RD-02-O	Odd	Tree Roots	Structural
ROCKWOOD HEIGHTS RD-02-O	Odd	Cracking	Structural
ROSEDALE AVENUE		Total: 21	
ROSEDALE AVE-O	Odd	Cracking	Structural
ROSEDALE AVE-O	Odd	Depression	Structural
ROSEDALE AVE-O	Odd	Cracking	Structural
ROSEDALE AVE-O	Odd	Cracking	Structural
ROSEDALE AVE-O	Odd	Depression	Structural
ROSEDALE AVE-O	Odd	Cracking	Structural
ROSEDALE AVE-O	Odd	Cracking	Structural
ROSEDALE AVE-O	Odd	Cracking	Structural
ROSEDALE AVE-O	Odd	Cracking	Structural
ROSEDALE AVE-O	Odd	Cracking	Structural
ROSEDALE AVE-O	Odd	Cracking	Structural

	Location	Obstruction	Type
ROSEDALE AVE-O	Odd	Patch	Structural
ROSEDALE AVE-O	Odd	Patch	Structural
ROSEDALE AVE-O	Odd	Cracking	Structural
ROSEDALE AVE-O	Odd	Cracking	Structural
ROSEDALE AVE-O	Odd	Patch	Structural
ROSEDALE AVE-E	Even	Cracking	Structural
ROSEDALE AVE-E	Even	Patch	Structural
ROSEDALE AVE-E	Even	Cracking	Structural
ROSEDALE AVE-E	Even	Cracking	Structural
ROSEDALE AVE-E	Even	Cracking	Structural
SCHOOL STREET		Total:220	
SCHOOL ST-05-O	Odd	Depression	Structural
SCHOOL ST-05-O	Odd	Tree Roots	Structural
SCHOOL ST-05-O	Odd	Depression	Structural
SCHOOL ST-05-O	Odd	Tree Roots	Structural
SCHOOL ST-05-O	Odd	Cracking	Structural
SCHOOL ST-05-O	Odd	Depression	Structural
SCHOOL ST-05-O	Odd	Cracking	Structural
SCHOOL ST-05-O	Odd	Cracking	Structural
SCHOOL ST-05-O	Odd	Depression	Structural
SCHOOL ST-05-O	Odd	Cracking	Structural
SCHOOL ST-05-O	Odd	Depression	Structural
SCHOOL ST-05-O	Odd	Cracking	Structural
SCHOOL ST-05-O	Odd	Tree Roots	Structural
SCHOOL ST-05-O	Odd	Missing Section/Panel	Structural
SCHOOL ST-05-O	Odd	Cracking	Structural
SCHOOL ST-05-O	Odd	Spalling	Structural
SCHOOL ST-05-O	Odd	Tree Roots	Structural
SCHOOL ST-05-O	Odd	Tree Roots	Structural
SCHOOL ST-05-O	Odd	Depression	Structural
SCHOOL ST-05-O	Odd	Depression	Structural
SCHOOL ST-05-O	Odd	Cracking	Structural
SCHOOL ST-05-O	Odd	Cracking	Structural
SCHOOL ST-05-O	Odd	Cracking	Structural
SCHOOL ST-05-O	Odd	Tree Roots	Structural
SCHOOL ST-06-O	Odd	Depression	Structural
SCHOOL ST-06-O	Odd	Cracking	Structural
SCHOOL ST-06-O	Odd	Cracking	Structural
SCHOOL ST-06-O	Odd	Depression	Structural
SCHOOL ST-06-O	Odd	Depression	Structural
SCHOOL ST-06-O	Odd	Depression	Structural
SCHOOL ST-06-O	Odd	Cracking	Structural
SCHOOL ST-06-O	Odd	Depression	Structural
SCHOOL ST-06-O	Odd	Depression	Structural
SCHOOL ST-06-O	Odd	Cracking	Structural
SCHOOL ST-06-O	Odd	Cracking	Structural
SCHOOL ST-07-O	Odd	Cracking	Structural
SCHOOL ST-07-O	Odd	Cracking	Structural
SCHOOL ST-07-O	Odd	Depression	Structural
SCHOOL ST-07-O	Odd	Cracking	Structural
SCHOOL ST-07-O	Odd	Cracking	Structural
SCHOOL ST-07-O	Odd	Cracking	Structural
SCHOOL ST-07-O	Odd	Depression	Structural
SCHOOL ST-07-O	Odd	Cracking	Structural
SCHOOL ST-07-O	Odd	Depression	Structural
SCHOOL ST-07-O	Odd	Cracking	Structural
SCHOOL ST-07-O	Odd	Depression	Structural

	Location	Obstruction	Type
SCHOOL ST-07-O	Odd	Cracking	Structural
SCHOOL ST-07-O	Odd	Depression	Structural
SCHOOL ST-07-O	Odd	Patch	Structural
SCHOOL ST-07-O	Odd	Depression	Structural
SCHOOL ST-07-O	Odd	Cracking	Structural
SCHOOL ST-07-O	Odd	Depression	Structural
SCHOOL ST-07-O	Odd	Cracking	Structural
SCHOOL ST-07-O	Odd	Patch	Structural
SCHOOL ST-07-O	Odd	Depression	Structural
SCHOOL ST-07-O	Odd	Depression	Structural
SCHOOL ST-08-O	Odd	Cracking	Structural
SCHOOL ST-08-O	Odd	Depression	Structural
SCHOOL ST-08-O	Odd	Cracking	Structural
SCHOOL ST-08-O	Odd	Depression	Structural
SCHOOL ST-08-O	Odd	Depression	Structural
SCHOOL ST-09-O	Odd	Depression	Structural
SCHOOL ST-09-O	Odd	Depression	Structural
SCHOOL ST-09-O	Odd	Cracking	Structural
SCHOOL ST-09-O	Odd	Cracking	Structural
SCHOOL ST-09-O	Odd	Depression	Structural
SCHOOL ST-09-O	Odd	Tree Roots	Structural
SCHOOL ST-09-O	Odd	Depression	Structural
SCHOOL ST-09-O	Odd	Cracking	Structural
SCHOOL ST-09-O	Odd	Cracking	Structural
SCHOOL ST-10-O	Odd	Cracking	Structural
SCHOOL ST-10-O	Odd	Depression	Structural
SCHOOL ST-10-O	Odd	Cracking	Structural
SCHOOL ST-10-O	Odd	Cracking	Structural
SCHOOL ST-10-O	Odd	Depression	Structural
SCHOOL ST-10-O	Odd	Missing Section/Panel	Structural
SCHOOL ST-10-O	Odd	Depression	Structural
SCHOOL ST-10-O	Odd	Depression	Structural
SCHOOL ST-10-O	Odd	Cracking	Structural
SCHOOL ST-10-O	Odd	Tree Roots	Structural
SCHOOL ST-10-O	Odd	Depression	Structural
SCHOOL ST-11-O	Odd	Cracking	Structural
SCHOOL ST-11-O	Odd	Depression	Structural
SCHOOL ST-11-O	Odd	Cracking	Structural
SCHOOL ST-12-O	Odd	Depression	Structural
SCHOOL ST-12-O	Odd	Depression	Structural
SCHOOL ST-12-O	Odd	Cracking	Structural
SCHOOL ST-12-O	Odd	Cracking	Structural
SCHOOL ST-12-O	Odd	Cracking	Structural
SCHOOL ST-13-O	Odd	Cracking	Structural
SCHOOL ST-13-O	Odd	Tree Roots	Structural
SCHOOL ST-13-O	Odd	Cracking	Structural
SCHOOL ST-13-O	Odd	Cracking	Structural
SCHOOL ST-13-O	Odd	Patch	Structural
SCHOOL ST-13-O	Odd	Cracking	Structural
SCHOOL ST-13-O	Odd	Cracking	Structural
SCHOOL ST-13-O	Odd	Cracking	Structural
SCHOOL ST-14-O	Odd	Patch	Structural
SCHOOL ST-14-O	Odd	Patch	Structural
SCHOOL ST-14-O	Odd	Cracking	Structural
SCHOOL ST-14-O	Odd	Cracking	Structural
SCHOOL ST-14-O	Odd	Tree Roots	Structural
SCHOOL ST-14-O	Odd	Cracking	Structural

	Location	Obstruction	Type
SCHOOL ST-14-O	Odd	Cracking	Structural
SCHOOL ST-14-O	Odd	Tree Roots	Structural
SCHOOL ST-18-O	Odd	Cracking	Structural
SCHOOL ST-18-O	Odd	Cracking	Structural
SCHOOL ST-18-O	Odd	Cracking	Structural
SCHOOL ST-18-O	Odd	Depression	Structural
SCHOOL ST-19-O	Odd	Depression	Structural
SCHOOL ST-19-O	Odd	Cracking	Structural
SCHOOL ST-19-O	Odd	Cracking	Structural
SCHOOL ST-19-O	Odd	Depression	Structural
SCHOOL ST-19-O	Odd	Cracking	Structural
SCHOOL ST-19-O	Odd	Depression	Structural
SCHOOL ST-19-O	Odd	Cracking	Structural
SCHOOL ST-19-O	Odd	Depression	Structural
SCHOOL ST-20-O	Odd	Depression	Structural
SCHOOL ST-20-O	Odd	Cracking	Structural
SCHOOL ST-20-O	Odd	Depression	Structural
SCHOOL ST-20-O	Odd	Cracking	Structural
SCHOOL ST-20-O	Odd	Cracking	Structural
SCHOOL ST-20-O	Odd	Depression	Structural
SCHOOL ST-20-O	Odd	Cracking	Structural
SCHOOL ST-20-O	Odd	Cracking	Structural
SCHOOL ST-20-O	Odd	Cracking	Structural
SCHOOL ST-20-O	Odd	Depression	Structural
SCHOOL ST-20-O	Odd	Patch	Structural
SCHOOL ST-20-O	Odd	Depression	Structural
SCHOOL ST-20-O	Odd	Cracking	Structural
SCHOOL ST-20-O	Odd	Depression	Structural
SCHOOL ST-20-O	Odd	Depression	Structural
SCHOOL ST-20-O	Odd	Cracking	Structural
SCHOOL ST-20-O	Odd	Depression	Structural
SCHOOL ST-20-O	Odd	Depression	Structural
SCHOOL ST-20-O	Odd	Cracking	Structural
SCHOOL ST-20-O	Odd	Depression	Structural
SCHOOL ST-20-O	Odd	Depression	Structural
SCHOOL ST-20-O	Odd	Cracking	Structural
SCHOOL ST-20-O	Odd	Depression	Structural
SCHOOL ST-20-O	Odd	Depression	Structural
SCHOOL ST-20-O	Odd	Cracking	Structural
SCHOOL ST-20-O	Odd	Depression	Structural
SCHOOL ST-20-O	Odd	Depression	Structural
SCHOOL ST-20-O	Odd	Cracking	Structural
SCHOOL ST-08-E	Even	Missing Section/Panel	Structural
SCHOOL ST-08-E	Even	Depression	Structural
SCHOOL ST-08-E	Even	Spalling	Structural
SCHOOL ST-08-E	Even	Cracking	Structural
SCHOOL ST-08-E	Even	Depression	Structural
SCHOOL ST-08-E	Even	Cracking	Structural
SCHOOL ST-08-E	Even	Depression	Structural
SCHOOL ST-09-E	Even	Spalling	Structural
SCHOOL ST-09-E	Even	Cracking	Structural
SCHOOL ST-09-E	Even	Depression	Structural
SCHOOL ST-09-E	Even	Cracking	Structural
SCHOOL ST-09-E	Even	Depression	Structural
SCHOOL ST-10-E	Even	Cracking	Structural
SCHOOL ST-10-E	Even	Cracking	Structural
SCHOOL ST-10-E	Even	Cracking	Structural
SCHOOL ST-10-E	Even	Cracking	Structural
SCHOOL ST-10-E	Even	Depression	Structural

	Location	Obstruction	Type
SCHOOL ST-10-E	Even	Depression	Structural
SCHOOL ST-10-E	Even	Cracking	Structural
SCHOOL ST-10-E	Even	Patch	Structural
SCHOOL ST-10-E	Even	Depression	Structural
SCHOOL ST-10-E	Even	Depression	Structural
SCHOOL ST-10-E	Even	Cracking	Structural
SCHOOL ST-11-E	Even	Depression	Structural
SCHOOL ST-11-E	Even	Cracking	Structural
SCHOOL ST-11-E	Even	Depression	Structural
SCHOOL ST-11-E	Even	Depression	Structural
SCHOOL ST-11-E	Even	Depression	Structural
SCHOOL ST-11-E	Even	Depression	Structural
SCHOOL ST-11-E	Even	Cracking	Structural
SCHOOL ST-11-E	Even	Cracking	Structural
SCHOOL ST-11-E	Even	Cracking	Structural
SCHOOL ST-11-E	Even	Patch	Structural
SCHOOL ST-12-E	Even	Cracking	Structural
SCHOOL ST-12-E	Even	Cracking	Structural
SCHOOL ST-12-E	Even	Cracking	Structural
SCHOOL ST-13-E	Even	Depression	Structural
SCHOOL ST-13-E	Even	Cracking	Structural
SCHOOL ST-13-E	Even	Patch	Structural
SCHOOL ST-13-E	Even	Cracking	Structural
SCHOOL ST-13-E	Even	Cracking	Structural
SCHOOL ST-14-E	Even	Cracking	Structural
SCHOOL ST-14-E	Even	Cracking	Structural
SCHOOL ST-14-E	Even	Cracking	Structural
SCHOOL ST-14-E	Even	Cracking	Structural
SCHOOL ST-14-E	Even	Cracking	Structural
SCHOOL ST-14-E	Even	Patch	Structural
SCHOOL ST-18-E	Even	Patch	Structural
SCHOOL ST-18-E	Even	Patch	Structural
SCHOOL ST-18-E	Even	Patch	Structural
SCHOOL ST-18-E	Even	Cracking	Structural
SCHOOL ST-18-E	Even	Cracking	Structural
SCHOOL ST-19-E	Even	Cracking	Structural
SCHOOL ST-19-E	Even	Depression	Structural
SCHOOL ST-19-E	Even	Cracking	Structural
SCHOOL ST-19-E	Even	Depression	Structural
SCHOOL ST-19-E	Even	Cracking	Structural
SCHOOL ST-19-E	Even	Cracking	Structural
SCHOOL ST-19-E	Even	Patch	Structural
SCHOOL ST-19-E	Even	Cracking	Structural
SCHOOL ST-20-E	Even	Cracking	Structural
SCHOOL ST-20-E	Even	Depression	Structural
SCHOOL ST-20-E	Even	Cracking	Structural
SCHOOL ST-20-E	Even	Depression	Structural
SCHOOL ST-20-E	Even	Cracking	Structural
SCHOOL ST-20-E	Even	Cracking	Structural
SCHOOL ST-20-E	Even	Depression	Structural
SCHOOL ST-20-E	Even	Cracking	Structural
SCHOOL ST-20-E	Even	Patch	Structural
SCHOOL ST-20-E	Even	Cracking	Structural
SCHOOL ST-20-E	Even	Cracking	Structural
SCHOOL ST-20-E	Even	Cracking	Structural
SCHOOL ST-20-E	Even	Cracking	Structural
SCHOOL ST-20-E	Even	Cracking	Structural

	Location	Obstruction	Type
SCHOOL ST-20-E	Even	Depression	Structural
SCHOOL ST-20-E	Even	Cracking	Structural
SCHOOL ST-20-E	Even	Patch	Structural
SEA STREET		Total: 11	
SEA ST-01-O	Odd	Cracking	Structural
SEA ST-01-O	Odd	Depression	Structural
SEA ST-01-O	Odd	Cracking	Structural
SEA ST-01-O	Odd	Depression	Structural
SEA ST-01-O	Odd	Depression	Structural
SEA ST-01-O	Odd	Cracking	Structural
SEA ST-02-O	Odd	Cracking	Structural
SEA ST-02-O	Odd	Depression	Structural
SEA ST-02-O	Odd	Depression	Structural
SEA ST-02-O	Odd	Patch	Structural
SEA ST-02-O	Odd	Cracking	Structural
SUMMER STREET		Total: 11	
SUMMER ST-O	Odd	Cracking	Structural
SUMMER ST-O	Odd	Cracking	Structural
SUMMER ST-O	Odd	Cracking	Structural
SUMMER ST-O	Odd	Cracking	Structural
SUMMER ST-O	Odd	Patch	Structural
SUMMER ST-E	Even	Cracking	Structural
SUMMER ST-E	Even	Patch	Structural
SUMMER ST-E	Even	Cracking	Structural
SUMMER ST-E	Even	Insufficient Width	Obstruction
SUMMER ST-E	Even	Insufficient Width	Obstruction
SUMMER ST-E	Even	Cracking	Structural
TAPPAN STREET		Total: 43	
TAPPAN ST-E	Even	Cracking	Structural
TAPPAN ST-E	Even	Cracking	Structural
TAPPAN ST-E	Even	Depression	Structural
TAPPAN ST-E	Even	Cracking	Structural
TAPPAN ST-E	Even	Depression	Structural
TAPPAN ST-E	Even	Spalling	Structural
TAPPAN ST-E	Even	Cracking	Structural
TAPPAN ST-E	Even	Depression	Structural
TAPPAN ST-E	Even	Cracking	Structural
TAPPAN ST-E	Even	Cracking	Structural
TAPPAN ST-E	Even	Spalling	Structural
TAPPAN ST-E	Even	Depression	Structural
TAPPAN ST-E	Even	Cracking	Structural
TAPPAN ST-E	Even	Spalling	Structural
TAPPAN ST-E	Even	Cracking	Structural
TAPPAN ST-E	Even	Cracking	Structural
TAPPAN ST-E	Even	Patch	Structural
TAPPAN ST-E	Even	Patch	Structural
TAPPAN ST-E	Even	Patch	Structural
TAPPAN ST-E	Even	Sidewalk Cross Slope	Structural
TAPPAN ST-E	Even	Depression	Structural
TAPPAN ST-E	Even	Depression	Structural
TAPPAN ST-E	Even	Depression	Structural
TAPPAN ST-E	Even	Depression	Structural
TAPPAN ST-E	Even	Depression	Structural
TAPPAN ST-E	Even	Cracking	Structural
TAPPAN ST-E	Even	Depression	Structural
TAPPAN ST-E	Even	Cracking	Structural

	Location	Obstruction	Type
TAPPAN ST-E	Even	Sidewalk Cross Slope	Structural
TAPPAN ST-E	Even	Sidewalk Cross Slope	Structural
TAPPAN ST-E	Even	Cracking	Structural
TAPPAN ST-E	Even	Cracking	Structural
TAPPAN ST-E	Even	Cracking	Structural
TAPPAN ST-E	Even	Sidewalk Cross Slope	Structural
TAPPAN ST-E	Even	Depression	Structural
TAPPAN ST-E	Even	Cracking	Structural
TAPPAN ST-E	Even	Depression	Structural
TAPPAN ST-E	Even	Cracking	Structural
TAPPAN ST-E	Even	Depression	Structural
TAPPAN ST-E	Even	Depression	Structural
TAPPAN ST-E	Even	Cracking	Structural
TAPPAN ST-E	Even	Depression	Structural
TAPPAN ST-E	Even	Cracking	Structural
UNION STREET		Total: 37	
UNION ST-01-O	Odd	Cracking	Structural
UNION ST-01-O	Odd	Cracking	Structural
UNION ST-01-O	Odd	Cracking	Structural
UNION ST-01-O	Odd	Cracking	Structural
UNION ST-02-O	Odd	Patch	Structural
UNION ST-02-O	Odd	Patch	Structural
UNION ST-02-O	Odd	Cracking	Structural
UNION ST-02-O	Odd	Cracking	Structural
UNION ST-02-O	Odd	Depression	Structural
UNION ST-03-O	Odd	Depression	Structural
UNION ST-03-O	Odd	Cracking	Structural
UNION ST-03-O	Odd	Cracking	Structural
UNION ST-03-O	Odd	Cracking	Structural
UNION ST-03-O	Odd	Patch	Structural
UNION ST-03-O	Odd	Patch	Structural
UNION ST-03-O	Odd	Cracking	Structural
UNION ST-03-O	Odd	Cracking	Structural
UNION ST-03-O	Odd	Cracking	Structural
UNION ST-03-O	Odd	Patch	Structural
UNION ST-03-O	Odd	Cracking	Structural
UNION ST-01-E	Even	Cracking	Structural
UNION ST-01-E	Even	Depression	Structural
UNION ST-01-E	Even	Cracking	Structural
UNION ST-01-E	Even	Cracking	Structural
UNION ST-02-E	Even	Cracking	Structural
UNION ST-02-E	Even	Cracking	Structural
UNION ST-02-E	Even	Cracking	Structural
UNION ST-02-E	Even	Cracking	Structural
UNION ST-03-E	Even	Cracking	Structural
UNION ST-03-E	Even	Cracking	Structural
UNION ST-03-E	Even	Cracking	Structural
UNION ST-03-E	Even	Cracking	Structural
UNION ST-03-E	Even	Cracking	Structural
UNION ST-03-E	Even	Depression	Structural
UNION ST-03-E	Even	Depression	Structural
UNION ST-03-E	Even	Cracking	Structural
UNION ST-03-E	Even	Patch	Structural
VICTORIA ROAD		Total: 18	
VICTORIA RD-O	Odd	Tree Roots	Structural
VICTORIA RD-O	Odd	Cracking	Structural
VICTORIA RD-O	Odd	Cracking	Structural

	Location	Obstruction	Type
VICTORIA RD-O	Odd	Cracking	Structural
VICTORIA RD-O	Odd	Tree Roots	Structural
VICTORIA RD-O	Odd	Depression	Structural
VICTORIA RD-O	Odd	Cracking	Structural
VICTORIA RD-O	Odd	Cracking	Structural
VICTORIA RD-E	Even	Depression	Structural
VICTORIA RD-E	Even	Cracking	Structural
VICTORIA RD-E	Even	Tree Roots	Structural
VICTORIA RD-E	Even	Tree Roots	Structural
VICTORIA RD-E	Even	Tree Roots	Structural
VICTORIA RD-E	Even	Depression	Structural
VICTORIA RD-E	Even	Depression	Structural
VICTORIA RD-E	Even	Tree Roots	Structural
VICTORIA RD-E	Even	Tree Roots	Structural
VICTORIA RD-E	Even	Depression	Structural
VINE STREET	Total: 44		
VINE ST-01-O	Odd	Cracking	Structural
VINE ST-01-O	Odd	Cracking	Structural
VINE ST-01-O	Odd	Cracking	Structural
VINE ST-01-O	Odd	Cracking	Structural
VINE ST-01-O	Odd	Depression	Structural
VINE ST-02-O	Odd	Depression	Structural
VINE ST-02-O	Odd	Cracking	Structural
VINE ST-02-O	Odd	Cracking	Structural
VINE ST-02-O	Odd	Cracking	Structural
VINE ST-02-O	Odd	Cracking	Structural
VINE ST-02-O	Odd	Depression	Structural
VINE ST-02-O	Odd	Depression	Structural
VINE ST-02-O	Odd	Patch	Structural
VINE ST-02-O	Odd	Cracking	Structural
VINE ST-02-O	Odd	Depression	Structural
VINE ST-01-E	Even	Insufficient Width	Obstruction
VINE ST-01-E	Even	Cracking	Structural
VINE ST-01-E	Even	Bush/Shrub	Maintenance
VINE ST-01-E	Even	Cracking	Structural
VINE ST-01-E	Even	Sign	Structural
VINE ST-01-E	Even	Insufficient Width	Obstruction
VINE ST-01-E	Even	Cracking	Structural
VINE ST-01-E	Even	Cracking	Structural
VINE ST-01-E	Even	Bush/Shrub	Maintenance
VINE ST-01-E	Even	Cracking	Structural
VINE ST-02-E	Even	Insufficient Width	Obstruction
VINE ST-02-E	Even	Depression	Structural
VINE ST-02-E	Even	Depression	Structural
VINE ST-02-E	Even	Cracking	Structural
VINE ST-02-E	Even	Cracking	Structural
VINE ST-02-E	Even	Insufficient Width	Obstruction
VINE ST-02-E	Even	Cracking	Structural
VINE ST-02-E	Even	Depression	Structural
VINE ST-02-E	Even	Cracking	Structural
VINE ST-03-E	Even	Depression	Structural
VINE ST-03-E	Even	Cracking	Structural
VINE ST-03-E	Even	Patch	Structural
VINE ST-03-E	Even	Utility Vault	Obstruction
VINE ST-03-E	Even	Cracking	Structural
VINE ST-03-E	Even	Cracking	Structural
VINE ST-03-E	Even	Cracking	Structural

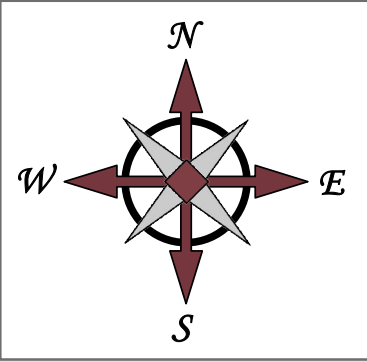
	Location	Obstruction	Type
VINE ST-03-E	Even	Patch	Structural
VINE ST-03-E	Even	Depression	Structural
VINE ST-03-E	Even	Cracking	Structural
WASHINGTON STREET		Total: 21	
WASHINGTON ST-01-O	Odd	Patch	Structural
WASHINGTON ST-01-O	Odd	Cracking	Structural
WASHINGTON ST-01-O	Odd	Cracking	Structural
WASHINGTON ST-01-O	Odd	Depression	Structural
WASHINGTON ST-01-O	Odd	Cracking	Structural
WASHINGTON ST-01-O	Odd	Cracking	Structural
WASHINGTON ST-01-O	Odd	Depression	Structural
WASHINGTON ST-02-O	Odd	Cracking	Structural
WASHINGTON ST-02-O	Odd	Patch	Structural
WASHINGTON ST-02-O	Odd	Cracking	Structural
WASHINGTON ST-01-E	Even	Depression	Structural
WASHINGTON ST-01-E	Even	Insufficient Width	Obstruction
WASHINGTON ST-01-E	Even	Insufficient Width	Obstruction
WASHINGTON ST-01-E	Even	Patch	Structural
WASHINGTON ST-01-E	Even	Cracking	Structural
WASHINGTON ST-01-E	Even	Depression	Structural
WASHINGTON ST-01-E	Even	Patch	Structural
WASHINGTON ST-01-E	Even	Cracking	Structural
WASHINGTON ST-02-E	Even	Depression	Structural
WASHINGTON ST-02-E	Even	Cracking	Structural
WASHINGTON ST-02-E	Even	Depression	Structural
WILLMONTON ROAD		Total: 26	
WILLMONTON RD-01-O	Odd	Depression	Structural
WILLMONTON RD-01-O	Odd	Cracking	Structural
WILLMONTON RD-01-O	Odd	Tree Roots	Structural
WILLMONTON RD-01-O	Odd	Depression	Structural
WILLMONTON RD-01-O	Odd	Cracking	Structural
WILLMONTON RD-01-O	Odd	Depression	Structural
WILLMONTON RD-01-O	Odd	Cracking	Structural
WILLMONTON RD-01-O	Odd	Depression	Structural
WILLMONTON RD-01-O	Odd	Cracking	Structural
WILLMONTON RD-01-O	Odd	Depression	Structural
WILLMONTON RD-02-O	Odd	Cracking	Structural
WILLMONTON RD-02-O	Odd	Cracking W/Grass	Structural
WILLMONTON RD-02-O	Odd	Depression	Structural
WILLMONTON RD-01-E	Even	Cracking	Structural
WILLMONTON RD-01-E	Even	Cracking	Structural
WILLMONTON RD-01-E	Even	Utility Pole	Obstruction
WILLMONTON RD-01-E	Even	Cracking	Structural
WILLMONTON RD-01-E	Even	Cracking	Structural
WILLMONTON RD-01-E	Even	Cracking	Structural
WILLMONTON RD-01-E	Even	Cracking	Structural
WILLMONTON RD-02-E	Even	Cracking	Structural
WILLMONTON RD-02-E	Even	Cracking	Structural
WILLMONTON RD-02-E	Even	Cracking	Structural
WILLMONTON RD-02-E	Even	Cracking W/Grass	Structural
WILLMONTON RD-02-E	Even	Depression	Structural
WINDERMERE PARK EXT		Total: 14	
WINDERMERE PARK EXT-02-O	Odd	Cracking	Structural
WINDERMERE PARK EXT-02-O	Odd	Cracking	Structural
WINDERMERE PARK EXT-02-O	Odd	Cracking	Structural

	Location	Obstruction	Type
WINDERMERE PARK EXT-02-O	Odd	Cracking	Structural
WINDERMERE PARK EXT-02-O	Odd	Cracking	Structural
WINDERMERE PARK EXT-02-E	Even	Tree Roots	Structural
WINDERMERE PARK EXT-02-E	Even	Cracking	Structural
WINDERMERE PARK EXT-02-E	Even	Tree Roots	Structural
WINDERMERE PARK EXT-02-E	Even	Cracking	Structural
WINDERMERE PARK EXT-02-E	Even	Cracking	Structural
WINDERMERE PARK EXT-02-E	Even	Depression	Structural
WINDERMERE PARK EXT-02-E	Even	Depression	Structural
WINDERMERE PARK EXT-02-E	Even	Cracking	Structural
WINDERMERE PARK EXT-02-E	Even	Depression	Structural

Town of Manchester-by-the-Sea, Massachusetts - East

Sidewalk Inventory

Condition Map



Legend

Sidewalk Point Issue

Maintenance

Structural

Observation

Sidewalk Condition

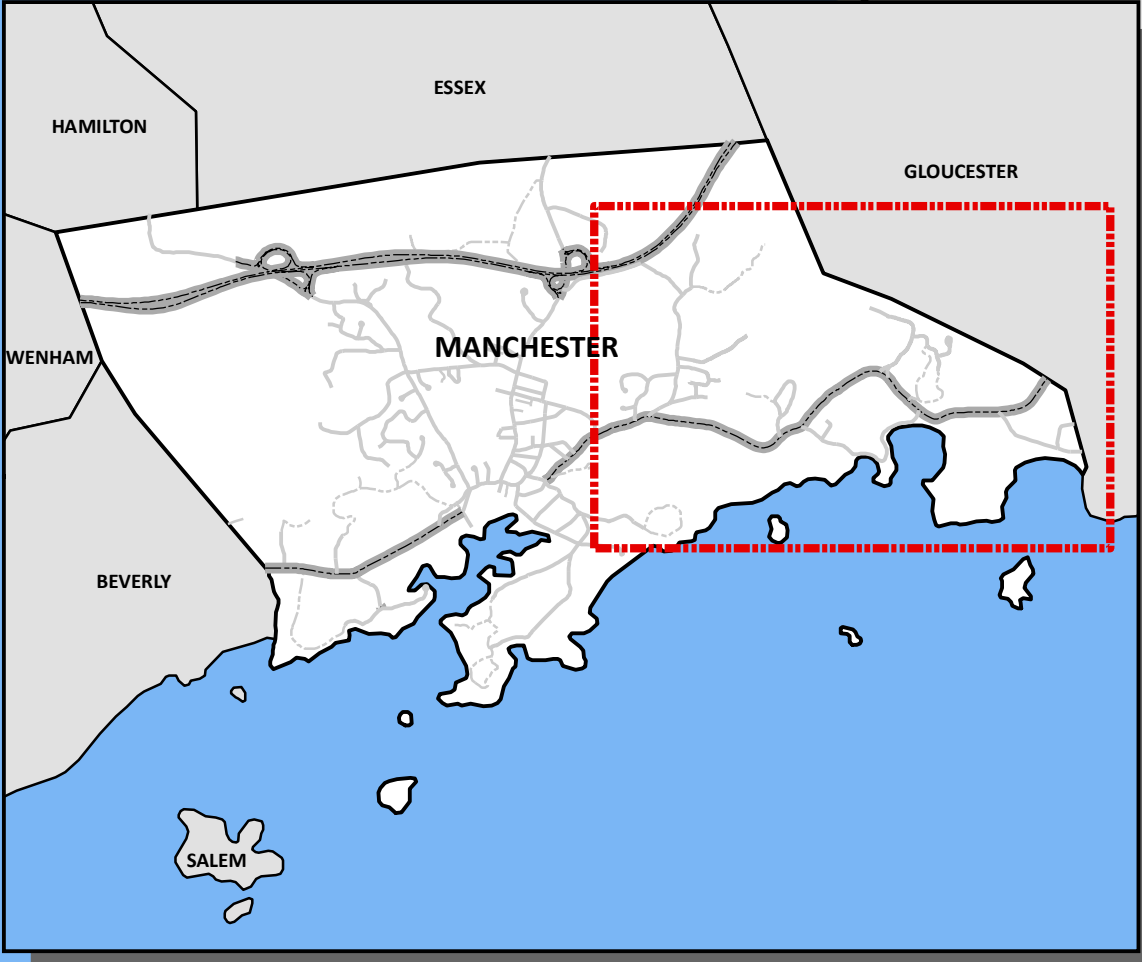
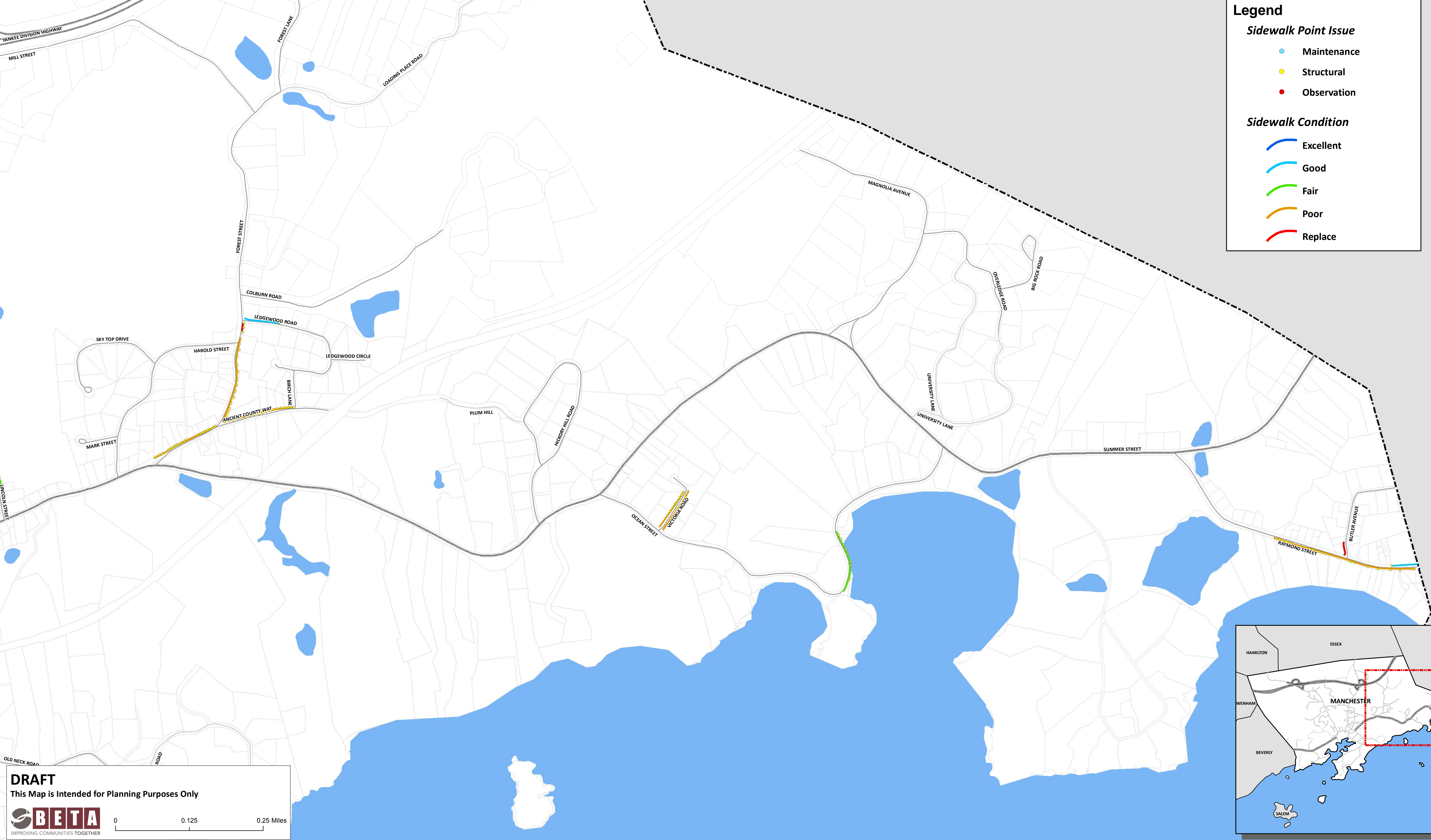
Excellent

Good

Fair

Poor

Replace



DRAFT
This Map is Intended for Planning Purposes Only

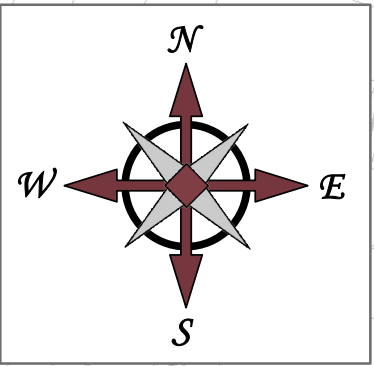


0 0.125 0.25 Miles

Town of Manchester-by-the-Sea, Massachusetts - West

Sidewalk Inventory

Condition Map



Legend

Sidewalk Point Issue

●

 Maintenance

●

 Structural

●

 Observation

Sidewalk Condition

Excellent

Good

Fair

Poor

Replace

